

# **ACS 2007 Production Summary File: Technical Documentation**

**American Community Survey Office  
U.S. Census Bureau**

# TABLE OF CONTENTS

## CHAPTERS

1	<a href="#">Abstract</a> .....	3
2	<a href="#">How to Use the ACS Summary file</a> .....	10
3	<a href="#">Subject Locator</a> .....	19
4	<a href="#">Summary Level Sequence Chart</a> .....	72
5	<a href="#">List of Detailed Tables</a> .....	74
6	<a href="#">Accuracy of the Data</a> .....	77
7	<a href="#">User Updates</a> .....	78

## APPENDICES

A	<a href="#">ACS Geographic Terms and Concepts</a> .....	79
B	<a href="#">Subject Definitions</a> .....	81
C	<a href="#">Data Collection and Processing Procedures</a> .....	82
D	<a href="#">Questionnaire</a> .....	83
E	<a href="#">Data Products and User Assistance</a> .....	84
F	<a href="#">Maps</a> .....	87
G	<a href="#">Code Lists</a> .....	88
H	<a href="#">Examples of Standard Error Calculations</a> .....	89
I	<a href="#">Sample SAS Programs</a> .....	92
J	<a href="#">User Notes</a> .....	93

# Chapter 1

## Abstract

---

### CONTENTS

<a href="#">CITATION</a> .....	3
<a href="#">SPECIAL NOTES</a> .....	3
<a href="#">UPDATES TO TECHNICAL DOCUMENT</a> .....	4
<a href="#">TYPE OF FILE</a> .....	4
<a href="#">SUBJECT CONTENT</a> .....	4
<a href="#">GEOGRAPHIC CONTENT</a> .....	6
<a href="#">DOCUMENT OVERVIEW</a> .....	8
<a href="#">USER UPDATES</a> .....	9

### CITATION

U.S. Census Bureau, American Community Survey 2007 Summary File: Technical Documentation.

### SPECIAL NOTES

- 1) Details on changes in the detailed tables and derived products since the 2006 ACS, including new products is available on the ACS Website at:  
<http://www.census.gov/acs/www/Products/2007/prodchanges.html>
- 2) Changes to the 2007 detailed tables which contain complete lists of new, removed, and modified tables can be referenced on the ACS Website on:  
[http://www.census.gov/acs/www/Downloads/Table\\_Changes2007.xls](http://www.census.gov/acs/www/Downloads/Table_Changes2007.xls)
- 3) Because of added/dropped tables, a lot of the special sequence numbers have been moved around. For instance, B24010 used to be in 0106 and 0107, but is now in 0111 and 0112. For more details, see Chapter 5 and review the file  
[http://www2.census.gov/acs2007\\_1yr/summaryfile/merge\\_5\\_6\\_final.xls](http://www2.census.gov/acs2007_1yr/summaryfile/merge_5_6_final.xls)
- 4) ACS 2007 detailed tables that were subject to geographic restrictions are located on:  
[http://www.census.gov/acs/www/Products/users\\_guide/ACS2007\\_Data\\_Product\\_Geographic\\_Restriction.xls](http://www.census.gov/acs/www/Products/users_guide/ACS2007_Data_Product_Geographic_Restriction.xls)
- 5) Each set of ACS Summary file Technical Documentation is tied to a specific ACS year. Currently we have four sets of ACS Summary file, 2005 (prototype), 2006 (prototype), 2006 (production), and 2007 (production.)
- 6) The Census Bureau and American Community Survey Office plans to re-run the 2005 ACS-Summary file and produce them in the current final format.

- 7) The ACS 2006 and ACS 2007 Production Summary files were created using the same file naming convention based on user input. For more details reference Chapter 1 of the technical documentation, section 3.3: File Identification.

## **NOTES ON UPDATES TO THE TECHNICAL DOCUMENT SINCE 2007**

### **Updated Chapters**

- **Chapter 1 Abstract** – Updates were made to all of the Special Notes, GQ section, number of tables, added the 2007 summary file link: [http://www2.census.gov/acs2007\\_1yr/summaryfile/](http://www2.census.gov/acs2007_1yr/summaryfile/), and in the document overview updated the Appendix F to contain "the 110th Congressional District".
- **Chapter 2 How to Use the ACS Summary file** - Updates were made to links.
- **Chapter 5 List of Detailed Tables** - Updated chapter 5 file link to [http://www2.census.gov/acs2007\\_1yr/summaryfile/merge\\_5\\_6\\_final.xls](http://www2.census.gov/acs2007_1yr/summaryfile/merge_5_6_final.xls)

### **Updated Appendices**

- **Appendix A ACS Geographic Terms and Concepts** - American Community Survey geographic terms and concepts were updated to reflect more current definitions.
- **Appendix D Questionnaire** - links to the ACS questionnaire on the website were updated to include the most recent questionnaire.
- **Appendix E Data Products and User Assistance** - Data Products and User Assistance section links and document sources were updated.
- **Appendix G Code Lists** – Removed code lists for 2006 and added code lists for 2007.
- **Appendix I Sample SAS Programs** – Updates were made to the sample SAS programs, added additional sample programs, updated links, and modified SASReadme.
- **Appendix J User Notes** - Updates were made to the user notes and to links.

## **TYPE OF FILE**

Summary statistics.

## **SUBJECT CONTENT**

The American Community Survey (ACS) is the largest household survey in the United States, with an annual sample size of about 3 million addresses. Every year the ACS supports the release of single-year estimates for geographic areas with populations of 65,000 or more.

This release of the American Community Survey Production Summary file (ACS-SF) contains the 2007 detailed tables (a.k.a. “base tables”). Please send any comments you have via email to: [nicholas.m.spanos@census.gov](mailto:nicholas.m.spanos@census.gov). We will keep users aware of any updates via the [ACS Alert](#) from the ACS website.

The 2006 and 2007 data products include the Group Quarters (GQ) population. The GQ population includes all people not living in households. ACS data were collected from residents who were currently residing in the GQs when the ACS was conducted at that location. Data are collected at two types of group quarters: institutional, including residences such as correctional facilities, nursing homes, and psychiatric hospitals; and non-institutional, which include residences such as college dormitories, military barracks, group homes, and shelters.

Every table that should be a “total population” table will include the GQ population. But, tables describing household characteristics will not include GQ data. For example, tables such as Median Household Income, will only have data from the population living in households.

The ACS-SF contains sample data, which is information about the characteristics of local communities compiled from the questions asked of a sample of people and housing units. The ACS covers a broad spectrum of geographic areas in the United States and Puerto Rico. The topics listed below are covered by the ACS and focus on demographic, social, housing, and economic characteristics.

Demographic:

<input type="radio"/> Sex	<input type="radio"/> Age
<input type="radio"/> Households by type	<input type="radio"/> Race
<input type="radio"/> Relationship	<input type="radio"/> Hispanic origin

Social:

<input type="radio"/> School enrollment	<input type="radio"/> Educational attainment
<input type="radio"/> Fertility	<input type="radio"/> Residence one year ago
<input type="radio"/> Veteran status	<input type="radio"/> Disability status
<input type="radio"/> U.S. citizenship status	<input type="radio"/> Language spoken at home
<input type="radio"/> Martial status	<input type="radio"/> Place of birth
<input type="radio"/> Year of entry	<input type="radio"/> Ancestry
<input type="radio"/> Grandparents caring for children	<input type="radio"/> World region of birth of foreign born

Economic:

<input type="radio"/> Employment status	<input type="radio"/> Commuting to work
<input type="radio"/> Class of worker	<input type="radio"/> Income and benefits
<input type="radio"/> Industry	<input type="radio"/> Occupation
<input type="radio"/> Poverty status	

## Housing:

○ Housing occupancy	○ Housing tenure
○ Units in structure	○ Year structure built
○ Number of rooms	○ Number of bedrooms
○ House heating fuel	○ Housing value
○ Occupants per room	○ Vehicles available
○ Mortgage status and costs	○ Utility cost
○ Year householder moved into unit	○ Gross rent

The Census Bureau uses the data collected by the ACS to create estimates and variances, which are termed statistics, for these characteristics. The statistics produced from the ACS describe the characteristics of population and housing in the United States and Puerto Rico. The ACS releases statistics in several forms – totals, proportions, percentages, means, medians, averages, and ratios. There are three sets of data files in identical format with one field per estimate. One file contains the estimates, the second file contains the standard errors, and the third file contains the margin of error.

The ACS-SF contains a total of 1369 unique detailed tables. Of these tables, ID's beginning with the letter "C" are collapsed versions of tables (i.e. these tables have fewer detailed cells). These detailed tables include both U.S. and Puerto Rico population and housing characteristics for the housing unit population and for a limited list of race and Hispanic or Latino groups. Population and housing items may be cross tabulated. Selected aggregates and medians are also provided. A complete listing of subjects in this file is found in the section, "[Subject Locator](#)".

## **GEOGRAPHIC CONTENT**

The ACS Production Summary file includes all detailed tables for all geographic areas published by the 2006 ACS. The main directory of the ACS-Summary File's FTP server ([http://www2.census.gov/acs2007\\_1yr/summaryfile/](http://www2.census.gov/acs2007_1yr/summaryfile/)) contains documentation on using the ACS-SF and 53 subdirectories, for the United States, the 50 states, the District of Columbia, and Puerto Rico. The file structures are identical for all files, but the geographic coverage differs.

This abstract lists the most frequently accessed geographic levels. The "Summary Level Sequence Chart" section outlines the hierarchical and inventory geographic summaries in their entirety. Two summary level sequence charts are provided: one for the state files and one for the final national file.

### **State Files**

ACS-SF for states also has inventory (complete) summaries for the following geographic areas:

- State
- County
- County subdivision
- Place
- Congressional district (110<sup>th</sup> Congress)
- Public Use Microdata Area (PUMA)
- School Districts
- Alaska Native Regional Corporation

### **National Files**

The ACS-SF national file provides summary data for the entire United States. The file structure includes, but is not limited to, the following geographic entities:

- United States
- Region
- Division
- State
- County
- County subdivision
- Place
- Metropolitan statistical area
- Combined statistical area
- New England City and Town Area (NECTA)
- Urban area
- Congressional district (110<sup>th</sup> Congress)
- Public Use Microdata Area (PUMA)

## **DOCUMENT OVERVIEW**

A brief summary of the chapters in the documentation is listed below:

1. [Chapter 1: Abstract](#) contains an overview of the American Community Survey (ACS) and how to use the ACS Summary File technical documentation.
2. [Chapter 2: How to Use the Summary File](#) gives users the background information on the data tables. It also describes the naming conventions on the table names, and it gives a brief summary of the geographies.
3. [Chapter 3: Subject Locator](#) is an index designed to help users quickly identify the tables in the summary file. This index is arranged in alphabetical order by the name of a subject.
4. [Chapter 4: Summary Level Sequence Chart](#) has a detailed list on the geographies and their summary level. The summary level is a three-character code that the ACS uses for identifications on geographies. The summary level is used in the production of the ACS data.
5. [Chapter 5: List of Detailed Tables](#) contains information on the file identification, the table's identification number, title of the table, how many cells are the table, the start position for the table, and the sequence numbers.
6. [Chapter 6: Accuracy of the Data](#) provides data users with a basic understanding of the sample design, estimation methodology, and accuracy of the data.
7. [Chapter 7: User Updates](#) informs data users about corrections, errata, and related information. Users can find unique characteristics, changes, or corrections associated with the data. American Community Survey Notes and Errata, which contain user updates for individual files, are located on <http://www.census.gov/acs/www/UseData/Errata.htm>.

Additional reference materials can be found in the appendices of this document:

- A. [Appendix A](#) contains information on American Community Survey geographic terms and concepts.
- B. [Appendix B](#) links to the subject definitions on the ACS Website.
- C. [Appendix C](#) gives an overview on American Community Survey's collection methods and procedures. Data Collection and Processing Procedures are located in Appendix C.
- D. [Appendix D](#) links to the ACS questionnaire on the website.
- E. [Appendix E](#) links to data products and user assistance.
- F. [Appendix F](#) links to maps of areas published by the 2007 ACS for the "nation", "counties and places", "PUMAs", "Core Based Statistical Areas", and "the 110th Congressional District".
- G. [Appendix G](#) links to ACS code lists for "Ancestry", "Hispanic Origin", "Industry", "Language", "Occupation", "Place of Birth, Migration, and Place of Work", "Race", and "State". Also included is the GQ Code List.
- H. [Appendix H](#) consists of the document "Examples of Standard Error Calculations" which contains examples based on the real data to demonstrate the use of the formulas referenced in the Accuracy of the Data Document in Chapter 7.



- I. [Appendix I](#) links to FTP documentation, including the ReadMe file and sample SAS programs.
- J. Additional User Notes are located in [Appendix J](#).

## **USER UPDATES**

The section on User Updates informs data users about corrections, errata, and related explanatory information. These updates provide information about unique characteristics, changes, or corrections. However, sometimes this information becomes available too late to be reflected in the tables or related documentation. American Community Survey user updates are available on the Census Bureau's Internet site at <http://www.census.gov/acs/www/UseData/Errata.htm>. Users also can register to receive user updates by e-mail by contacting Customer Services Center, Marketing Services Office, U.S. Census Bureau on 301-763-INFO ([webmaster@census.gov](mailto:webmaster@census.gov)).

## Chapter 2

### How to Use the ACS Summary File

---

#### CONTENTS

HOW TO USE THE ACS SUMMARY FILE .....	10
CONTENTS.....	10
DATA FORMAT.....	10
FILE NAMING CONVENTIONS .....	11
READING THE GEOGRAPHIC HEADER RECORD.....	13
GEOGRAPHIC HIERARCHY PRIMER.....	15
DATA STRUCTURE AND SEGMENTATION .....	17

#### INTRODUCTION

“How to Use the ACS Summary File” is intended to be used as a guide for data users to the American Community Survey (ACS) summary file and the documentation. New users should review this chapter before using the ACS Summary File.

#### DATA FORMAT

All ACS Summary File (ACS-SF) are available in the .zip format, which is a compressed format to reduce the file size. Users can download the .zip files through the File Transfer Protocol (FTP) from the American Community Survey FTP site located at URL: [http://www2.census.gov/acs2007\\_1yr/summaryfile/](http://www2.census.gov/acs2007_1yr/summaryfile/). The ACS-SF will need to be unzipped before they can be read.

The FTP site has 53 directories for the data, which include the United States, the 50 states, District of Columbia, Puerto Rico, and example SAS programs. In each directory, there is a geography file for the selected area, and the .zip files are then organized by the geographic areas. For the user’s convenience, if users want the .zip files for all the geographies under a particular directory, the file all\_<state/dc/pr/us>.zip contains all the files in the directory. This allows the users to save time and not have to download each individual file.

After unzipping the ACS-SF, three ASCII (plain text) files are available, one file for the estimates, one for the margins of error, and one for the standard errors. Each ACS-SF includes detailed tables for all of the geographic areas published in 2007 and a geographic header record file in a fixed field; the geographic header record file's data portion includes a geographic link in the comma-delimited format. For more information

on the files and their purposes refer to the [README](#) file in the main directory on the FTP site on [http://www2.census.gov/acs2007\\_1yr/summaryfile/readme2007.pdf](http://www2.census.gov/acs2007_1yr/summaryfile/readme2007.pdf).

## **FILE NAMING CONVENTIONS**

The .zip file names for all of the files follow a predefined structure. The naming convention will enable a user and/or a computer program to determine the contents of a file from its name. Figures 2.1 and 2.2 displays an overview of the file naming conventions.

ACS SF file naming convention for the data summary file names will be *tyyyyppggssssiterr.zip*:

- *t* = type of data (e=estimate, m=margin of error, s=standard error)
- *yyyy* = reference year for the data, e.g., 2005
- *p* = period covered by the file (1=1-year, 3=3-year, 5=5-year)
- *gg* = geographic area (state or US) covered by the file; 'PR' for the Puerto Rico Community Survey
- *ssss* = file sequence number (valid range is 0001 through 9999)

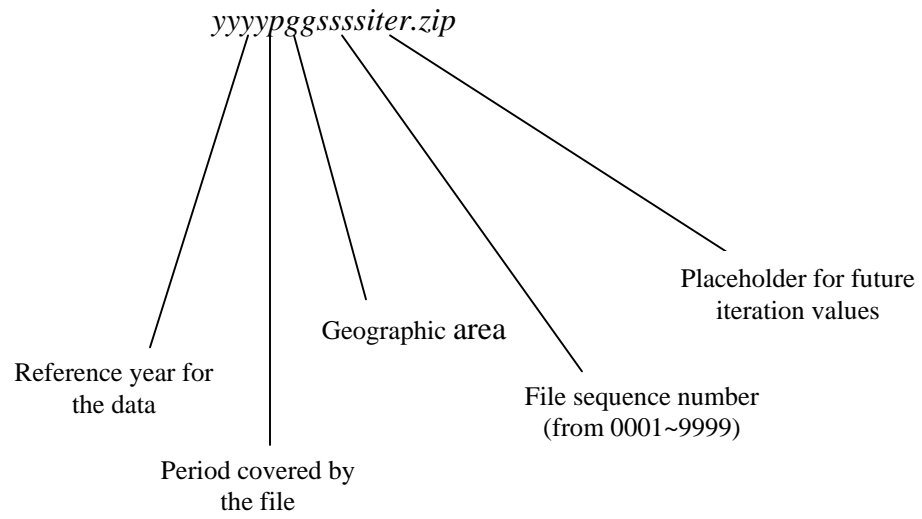
This sequence number will be used in a manner similar to the approach taken for the SF3. Each sequence number will correspond to a series of detailed tables. Each record of this file will be for a unique geographic area published by the ACS. All the data cells contained in the detailed tables for that geographic area would be on this record. There will be a file for the estimates and a separate one for the standard errors.

- *iter* = '000', placeholder for future values for iteration
- *r* = data revision indicator, only present if needed. 'a', 'b', etc

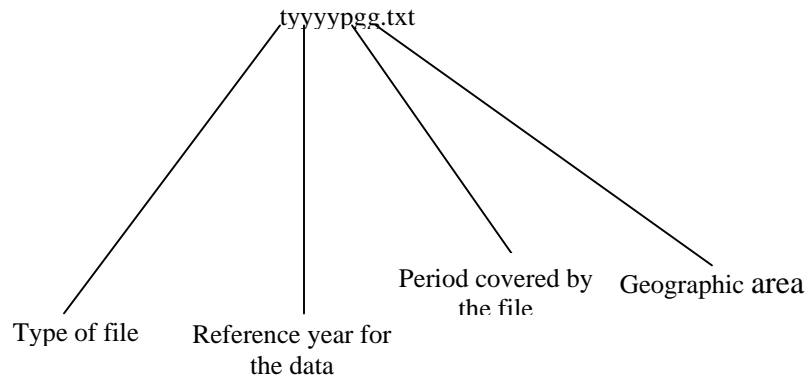
The ACS-SF file naming convention for the geographic header files will be *tyyyyppgg.txt*:

- *t* = type of data (g= geographic header file)
- *yyyy* = reference year for the data, e.g., 2005
- *p* = period covered by the file (1=1-year, 3=3-year, 5=5-year)
- *gg* = geographic area (state or US) covered by the file; 'PR' for the Puerto Rico Community Survey

**Figure 2.1 Zip File Naming Convention Example**



**Figure 2.2 Geoheader Summary File Naming Convention Example**



## **READING THE GEOGRAPHIC HEADER RECORD**

The geographic header record layout is below (Table 2.1). The information in each summary level column is a guide to the presence or absence of additional geographic information on that specific summary level. In each row of a particular geographic area code, there is a listing of the summary levels that contain the area code. For example, to uniquely identify a county (summary level 050) you need to know the state and county code. There are 9 Brown counties in the U.S. and in order to identify it uniquely you need to know the state.

**Table 2.1 Geographic Header Record Layout for the ACS Summary File**

<b>Data Dictionary Reference Name</b>	<b>Description</b>	<b>Field Size</b>	<b>Starting Position</b>	<b>Geographic Summary Levels For Single-Year Tables</b>
<b>RECORD CODES</b>				
FILEID	Always equal to ACS Summary File identification	6	1	All Summary Levels
STUSAB	State Postal Abbreviation	2	7	All Summary Levels
SUMLEVEL	Summary Level	3	9	All Summary Levels
COMPONENT	Geographic Component	2	12	All Summary Levels
LOGRECNO	Logical Record Number	7	14	All Summary Levels
<b>GEOGRAPHIC AREA CODES</b>				
US	US	1	21	010
REGION	Census Region	1	22	020
DIVISION	Census Division	1	23	030
STATECE	State (Census Code)	2	24	040, 050, 060, 160, 230, 500, 795, 950, 960, 970
STATE	State (FIPS Code)	2	26	040, 050, 060, 160, 230, 500, 795, 950, 960, 970
COUNTY	County of current residence	3	28	050, 060
COUSUB	County Subdivision (FIPS)	5	31	060
PLACE	Place (FIPS Code)	5	36	160, 312, 352
TRACT	Census Tract	6	41	Reserved for future use
BLKGRP	Block Group	1	47	Reserved for future use
CONCIT	Consolidated City	5	48	Reserved for future use
AIANHH	American Indian Area/Alaska Native Area/ Hawaiian Home Land (Census)	4	53	250
AIANHHFP	American Indian Area/Alaska Native Area/ Hawaiian Home Land (FIPS)	5	57	250
AIHHTLI	American Indian Trust Land/ Hawaiian Home Land Indicator	1	62	Reserved for future use
AITSCCE	American Indian Tribal Subdivision (Census)	3	63	Reserved for future use
AITSF	American Indian Tribal Subdivision (FIPS)	5	66	Reserved for future use
ANRC	Alaska Native Regional Corporation (FIPS)	5	71	230
CBSA	Metropolitan and Micropolitan Statistical Area	5	76	310, 312, 314, 332, P10, P11, P12
CSA	Combined Statistical Area	3	81	330, P09
METDIV	Metropolitan Division	5	84	314
MACC	Metropolitan Area Central City	1	89	Reserved for future use
MEMI	Metropolitan/Micropolitan Indicator Flag	1	90	010, 020, 030, 040
NECTA	New England City and Town Area	5	91	350, 352, 355, P14, P15, P16

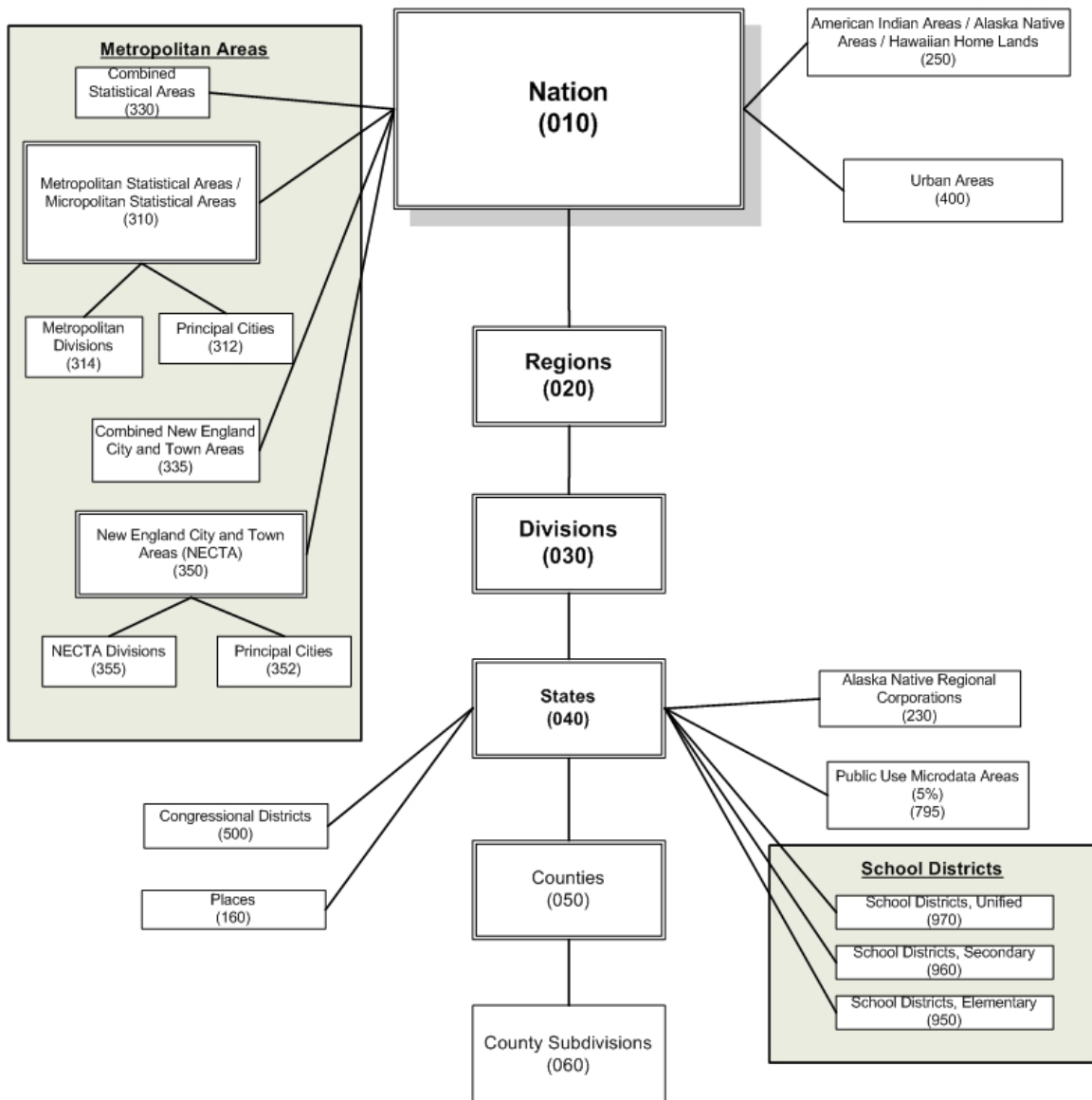
CNECTA	New England City and Town Combined Statistical Area	3	96	335
NECTADIV	New England City and Town Area Division	5	99	355
UA	Urban Area	5	104	400
UACP	Urban Area Central Place	5	109	Reserved for future use
CDCURR	Current Congressional District ***	2	114	500
SLDU	State Legislative District Upper	3	116	Reserved for future use
SLDL	State Legislative District Lower	3	119	Reserved for future use
VTD	Voting District	6	122	Reserved for future use
ZCTA3	ZIP Code Tabulation Area (3-digit)	3	128	Reserved for future use
ZCTA5	ZIP Code Tabulation Area (5-digit)	5	131	Reserved for future use
SUBMCD	Subbarrio (FIPS)	2	136	Reserved for future use
SDELM	School District (Elementary)	5	138	950
SDSEC	School District (Secondary)	5	143	960
SDUNI	School District (Unified)	5	148	970
UR	Urban/Rural	1	153	010, 020, 030, 040
PCI	Principal City Indicator	1	154	312, 352
TAZ	Traffic Analysis Zone	6	155	Reserved for future use
UGA	Urban Growth Area	5	161	Reserved for future use
PUMA5	Public Use Microdata Area – 5% File	5	166	795, 901
PUMA1	Public Use Microdata Area – 1% File	5	171	Reserved for future use
GEOID	Geographic Identifier	40	176	All Summary Levels
NAME	Area Name	200	216	All Summary Levels
RESERVED	For Future needs	50	418	Reserved for future use

**Note:** The Geographic Summary Levels that are designated, as “Reserved for future use” will be used for the ACS period estimate data products. These reference names will not be defined in the ACS Geographic Terms and Concepts section until they are used.

## GEOGRAPHIC HIERARCHY PRIMER

Detailed information on ACS summary levels can be found in Chapter 4. Chapter 4 identifies each geographic level and provides the code for the level. Figure 2.3 provides an example of the various geographic hierarchies used in the American Community Survey. Take some time to review this chart to become familiar with the different hierarchies.

**Figure 2.3 Hierarchy of ACS Geographic Entities**



## **WORKED EXAMPLE**

Let's say you want to create Table B08406, "Sex of workers by means of transportation to work for workplace geography," for the state of Alaska from the files on the ftp site [http://www2.census.gov/acs2007\\_1yr/summaryfile/](http://www2.census.gov/acs2007_1yr/summaryfile/). Which files do you need? How do you read the files?

You will need three files:

1. The data dictionary (merge\_5\_6\_final.xls)
2. The data file (e2007ak0001000.txt)
3. The geography file (g20071ak.txt)

Start with the data dictionary, merge\_5\_6\_final.xls. Under the "Tblid" column, look for the value "B08406". You will see that the "Sequence Number" is "0003." This means that the data you looking for are in the file "e2007ak0003000.txt". How do we know this is the right file? We know this from the name of the file: the "e" stands for estimate, 2007 is the year, "ak" is the state (Alaska), and "0003" is the sequence number (which contains the data for Table B08406). See the "File Naming Conventions" section in Chapter 2.

Then use the geography file for Alaska to determine the location within the state to which the data refer. The appropriate file is g20071ak.txt, where "g" means "geography", 2007 is the year, 1 is the period estimate (in this case, 1-year estimate), and ak is the state. (For each state, the geography file contains the lower-case postal-abbreviation of the state.)

When you open the data file, e20071ak0001000.txt (the data file), you will see the following comma-delimited fields on the first line:

```
ACSSF,2007e1,ak,000,0003,0000001,335039,264535,219908,44627,35706, ...
```

The first six fields – from "ACSSF" to "0000001" – are identifiers.

- A. The first field tells you that this is an ACS Summary File;
- B. The second tells you that these data are one-year estimates for the year 2007 (notice the "e" before "2007" and the "1" at the end);
- C. The third tells you the state ("ak" is Alaska);
- D. The fourth is an iteration number;
- E. The fifth is the all-important sequence number;
- F. The last is a logical record code (LOGRECNO). The LOGRECNO identifies the location within a state.

The geography file, g20071ak.txt, describes the LOGRECNO. Each LOGRECNO specifies a location pertaining to the state. For example, a LOGRECNO of "0000001" means the state of Alaska; a LOGRECNO of "0000002" means just the urban areas in Alaska; a LOGRECNO of "0000003" refers to just rural areas in Alaska. Notice that each state has its own geography file.

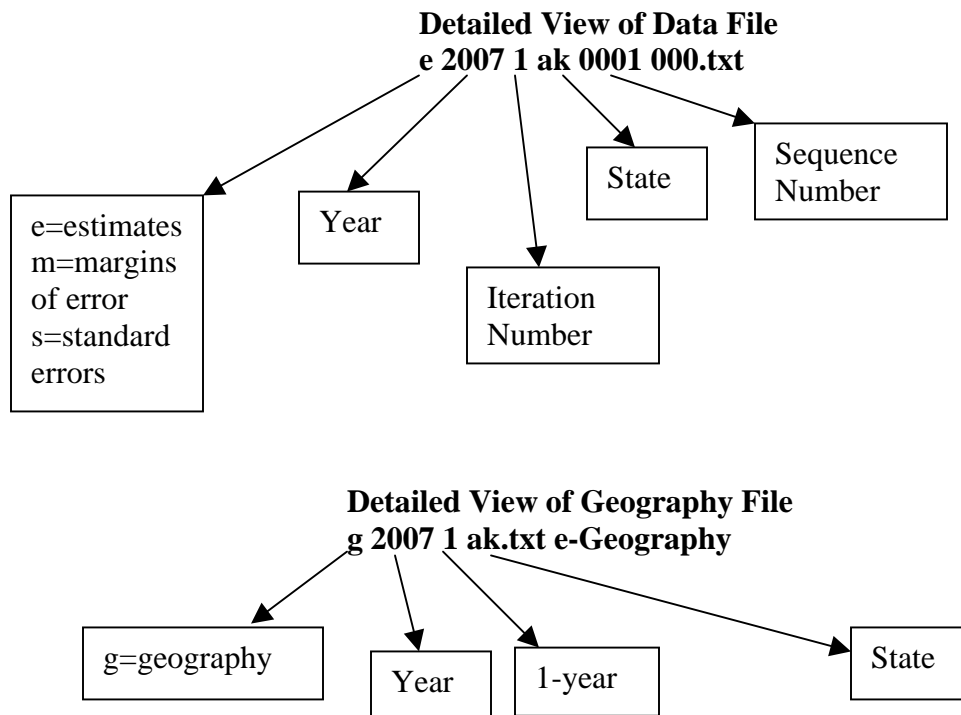


The other fields in the data file, from the seventh on, are data values. Each field corresponds to the value of the “line number” variable in the data dictionary. So field number seven (the 335039 value, after the sixth comma) corresponds to line number one, which is “Total”. Field number eight (the 264535 value, after the seventh comma) refers to line number two, which is “Car, Truck, or Van.” Field number nine (the 219908 value) corresponds to line number three, which is “Drove alone.” This continues all the way up to line number 51, at which point Table B08406 ends.

Were you to read this into a computer program using software such as SAS, you could translate the first ten fields of line number one in e20071ak0001000.txt as follows:

File Identification	File Type	State/U.S.-Abbreviation (USPS)	Character Iteration	Sequence Number	Logical Record Number	Total:	Car, truck, or van:	Drove alone	Carpooled:
ACSSF	2007e1	ak	000	0003	0000001	335039	264535	219908	
ACSSF	2007e1	ak	000	0003	0000010	149452	134141	113696	
ACSSF	2007e1	ak	000	0003	0000011	47314	39757	33343	
ACSSF	2007e1	ak	000	0003	0000012	.	.	.	
ACSSF	2007e1	ak	000	0003	0000013	149452	134141	113696	
ACSSF	2007e1	ak	000	0003	0000017	49452	134141	113696	

**Figure 2.4 Linking Geographic Header File to the Data Files**

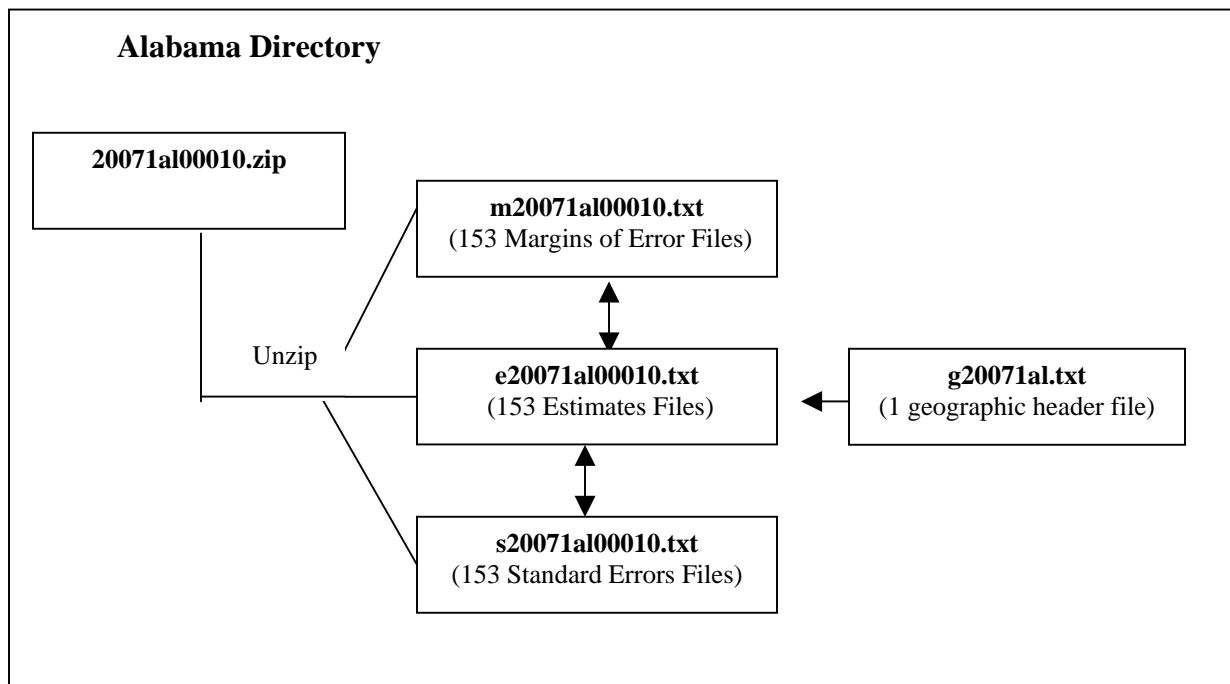


**DATA STRUCTURE AND SEGMENTATION**

Each ACS-SF consists of 460 physical files: one geographic header file and 459 data files, of which 153 contain estimates, 153 contain standard errors, and 153 contain margins of error. The larger size of the tables made it necessary to divide the files into smaller segments. Figure 2.5 displays the overview of the contents in an ACS Summary File. Additional information on file/table segmentation can be found in Chapter 5: List of Tables.

A logical unique record number is assigned to all files for a specific geographic entity. This is done so that all records for a specific entity can be linked together across files. Besides the logical record number, other identifying fields are also carried over from the geographic header file to the table files. These are file identification, state/U.S. abbreviation, and characteristic. For SAS users, a SAS program for importing the data files is provided in the main directory of the ACS-Summary File's FTP site on: [http://www2.census.gov/acs2007\\_1yr/summaryfile/](http://www2.census.gov/acs2007_1yr/summaryfile/)

**Figure 2.5 Contents in an ACS Summary File Overview**



## Chapter 3 Subject Locator

---

### CONTENTS

INTRODUCTION .....	20
TABLE BY SUBJECT .....	20
AGE OF HOUSEHOLDER .....	20
ANCESTRY .....	20
BEDROOMS .....	21
CITIZENSHIP STATUS.....	21
CLASS OF WORKER .....	22
DISABILITY .....	22
EARNINGS .....	26
EDUCATIONAL ATTAINMENT .....	28
EMPLOYMENT STATUS.....	29
FERTILITY .....	30
FOOD STAMPS .....	30
FOREIGN-BORN PLACE OF BIRTH.....	32
GRANDPARENTS.....	32
GROUP QUARTERS .....	34
HEATING FUEL.....	34
HISPANIC ORIGIN.....	34
HOUSEHOLD TYPE AND HOUSEHOLD SIZE .....	34
HOUSEHOLDS AND FAMILIES .....	35
IMPUTATION.....	37
INDUSTRY .....	48
JOURNEY TO WORK .....	49
KITCHEN FACILITIES .....	51
LANGUAGE .....	51
MARITAL STATUS .....	52
MIGRATION.....	54
OCCUPANCY AND VACANCY .....	55
OCCUPATION.....	55
OWNER COSTS .....	56
OWNER STATISTICS .....	57
PLACE OF BIRTH-DOMESTIC .....	57
PLACE OF WORK .....	58
PLUMBING FACILITIES .....	60
POVERTY .....	60
RACE.....	63
RACE OF HOUSEHOLDER .....	63
RELATIONSHIP .....	64
RENTER STATISTICS.....	64
ROOMS.....	65

SCHOOL ENROLLMENT.....	65
SEX AND AGE.....	66
TELEPHONE SERVICE AVAILABLE.....	67
TENURE.....	67
UNITS IN STRUCTURE.....	68
UNWEIGHTED.....	68
VALUE OF HOME.....	68
VEHICLES AVAILABLE.....	69
VETERAN.....	69
WORK STATUS.....	70
YEAR HOUSEHOLDER MOVED INTO UNIT.....	70
YEAR OF ENTRY.....	71
YEAR STRUCTURE BUILT.....	71

## **INTRODUCTION**

Subject Locator lists tables by subject alphabetically. Users can look up a subject to see a list of tables that are associated with a particular topic. This is useful as a quick reference to the data tables that are available from the American Community Survey, which is located on the following URL: [http://www.census.gov/acs/www/Products/users\\_guide/](http://www.census.gov/acs/www/Products/users_guide/). In addition, by clicking on the link of the table title below, users will see a table shell for the table; a table shell shows the line numbers and the stub without the actual data.

## **TABLE BY SUBJECT**

<b>Age of Householder</b>		
Table Title	Table ID	Release Date
<a href="#">Tenure By Age Of Householder [xls]</a>	B25007	September 23, 2008
<a href="#">Age Of Householder By Meals Included In Rent [xls]</a>	B25055	September 23, 2008
<b>Ancestry</b>		
Table Title	Table ID	Release Date
<a href="#">First Ancestry Reported [xls]</a>	B04001	September 23, 2008
<a href="#">Second Ancestry Reported [xls]</a>	B04002	September 23, 2008
<a href="#">Total Ancestry Reported [xls]</a>	B04003	September 23, 2008
<a href="#">People Reporting Single Ancestry [xls]</a>	B04004	September 23, 2008
<a href="#">People Reporting Multiple Ancestry [xls]</a>	B04005	September 23, 2008
<a href="#">People Reporting Ancestry [xls]</a>	B04006	September 23, 2008
<a href="#">Ancestry [xls]</a>	B04007	September 23, 2008

<b>Bedrooms</b>		
Table Title	Table ID	Release Date
<a href="#">Bedrooms [xls]</a>	B25041	September 23, 2008
<a href="#">Tenure By Bedrooms [xls]</a>	B25042	September 23, 2008
<b>Citizenship Status</b>		
Table Title	Table ID	Release Date
<a href="#">Citizenship Status In The United States [xls]</a>	B05001	September 23, 2008
<a href="#">Sex By Age By Citizenship Status [xls]</a>	B05003	September 23, 2008
<a href="#">Sex By Age By Citizenship Status (White Alone) [xls]</a>	B05003A	September 23, 2008
<a href="#">Sex By Age By Citizenship Status (Black Or African American Alone) [xls]</a>	B05003B	September 23, 2008
<a href="#">Sex By Age By Citizenship Status (American Indian And Alaska Native Alone) [xls]</a>	B05003C	September 23, 2008
<a href="#">Sex By Age By Citizenship Status (Asian Alone) [xls]</a>	B05003D	September 23, 2008
<a href="#">Sex By Age By Citizenship Status (Native Hawaiian And Other Pacific Islander Alone) [xls]</a>	B05003E	September 23, 2008
<a href="#">Sex By Age By Citizenship Status (Some Other Race Alone) [xls]</a>	B05003F	September 23, 2008
<a href="#">Sex By Age By Citizenship Status (Two Or More Races) [xls]</a>	B05003G	September 23, 2008
<a href="#">Sex By Age By Citizenship Status (White Alone, Not Hispanic Or Latino) [xls]</a>	B05003H	September 23, 2008
<a href="#">Sex By Age By Citizenship Status (Hispanic Or Latino) [xls]</a>	B05003I	September 23, 2008
<a href="#">Median Age By Citizenship Status By Sex [xls]</a>	B05004	September 23, 2008
<a href="#">Year Of Entry By Citizenship Status In The United States [xls]</a>	B05005	September 23, 2008
<a href="#">Sex By Place Of Birth By Year Of Entry For The Foreign-Born Population [xls]</a>	B05008	September 23, 2008
<a href="#">Age And Citizenship Of Own Children Under 18 Years In Families And Subfamilies By Living Arrangements And Nativity Of Parents [xls]</a>	B05009	September 23, 2008

<b>Class of Worker</b>		
Table Title	Table ID	Release Date
<a href="#">Sex By Class Of Worker For The Civilian Employed Population 16 Years And Over [xls]</a>	B24080	September 23, 2008
<a href="#">Class Of Worker By Median Earnings In The Past 12 Months (In 2007 Inflation-Adjusted Dollars) For The Civilian Employed Population 16 Years And Over [xls]</a>	B24081	September 23, 2008
<a href="#">Sex By Class Of Worker And Median Earnings In The Past 12 Months (In 2007 Inflation-Adjusted Dollars) For The Civilian Employed Population 16 Years And Over [xls]</a>	B24082	September 23, 2008
<a href="#">Sex By Class Of Worker For The Full-Time, Year-Round Civilian Employed Population 16 Years And Over [xls]</a>	B24090	September 23, 2008
<a href="#">Class Of Worker By Median Earnings In The Past 12 Months (In 2007 Inflation-Adjusted Dollars) For The Full-Time, Year-Round Civilian Employed Population 16 Years And Over [xls]</a>	B24091	September 23, 2008
<a href="#">Sex By Class Of Worker And Median Earnings In The Past 12 Months (In 2007 Inflation-Adjusted Dollars) For The Full-Time, Year-Round Civilian Employed Population 16 Years And Over [xls]</a>	B24092	September 23, 2008
<b>Disability</b>		
Table Title	Table ID	Release Date
<a href="#">Sex By Age By Number Of Disabilities For The Civilian Noninstitutionalized Population 5 Years And Over [xls]</a>	B18001	September 23, 2008
<a href="#">Sex By Age By Disability Status For The Civilian Noninstitutionalized Population 5 Years And Over [xls]</a>	B18002	September 23, 2008
<a href="#">Sex By Age By Sensory Disability For The Civilian Noninstitutionalized Population 5 Years And Over [xls]</a>	B18003	September 23, 2008
<a href="#">Sex By Age By Physical Disability For The Civilian Noninstitutionalized Population 5 Years And Over [xls]</a>	B18004	September 23, 2008
<a href="#">Sex By Age By Mental Disability For The Civilian Noninstitutionalized Population 5 Years And Over [xls]</a>	B18005	September 23, 2008
<a href="#">Sex By Age By Self-Care Disability For The Civilian Noninstitutionalized Population 5 Years And Over [xls]</a>	B18006	September 23, 2008
<a href="#">Sex By Age By Go-Outside-Home Disability For The Civilian Noninstitutionalized Population 16 Years And Over [xls]</a>	B18007	September 23, 2008
<a href="#">Sex By Age By Employment Disability For The Civilian Noninstitutionalized Population 16 To 64 Years [xls]</a>	B18008	September 23, 2008

<a href="#">Disability Status By School Enrollment And Educational Attainment For The Civilian Noninstitutionalized Population 18 To 34 Years [xls]</a>	B18010	September 23, 2008
<a href="#">Sensory Disability By School Enrollment And Educational Attainment For The Civilian Noninstitutionalized Population 18 To 34 Years [xls]</a>	B18011	September 23, 2008
<a href="#">Physical Disability By School Enrollment And Educational Attainment For The Civilian Noninstitutionalized Population 18 To 34 Years [xls]</a>	B18012	September 23, 2008
<a href="#">Mental Disability By School Enrollment And Educational Attainment For The Civilian Noninstitutionalized Population 18 To 34 Years [xls]</a>	B18013	September 23, 2008
<a href="#">Self-Care Disability By School Enrollment And Educational Attainment For The Civilian Noninstitutionalized Population 18 To 34 Years [xls]</a>	B18014	September 23, 2008
<a href="#">Go-Outside-Home Disability By School Enrollment And Educational Attainment For The Civilian Noninstitutionalized Population 18 To 34 Years [xls]</a>	B18015	September 23, 2008
<a href="#">Employment Disability By School Enrollment And Educational Attainment For The Civilian Noninstitutionalized Population 18 To 34 Years [xls]</a>	B18016	September 23, 2008
<a href="#">Disability Status By Sex By Age By Employment Status For The Civilian Noninstitutionalized Population 16 To 64 Years [xls]</a>	B18020	September 23, 2008
<a href="#">Disability Status By Sex By Age By Employment Status For The Civilian Noninstitutionalized Population 16 To 64 Years (White Alone) [xls]</a>	B18020A	September 23, 2008
<a href="#">Disability Status By Sex By Age By Employment Status For The Civilian Noninstitutionalized Population 16 To 64 Years (Black Or African American Alone) [xls]</a>	B18020B	September 23, 2008
<a href="#">Disability Status By Sex By Age By Employment Status For The Civilian Noninstitutionalized Population 16 To 64 Years (American Indian And Alaska Native Alone) [xls]</a>	B18020C	September 23, 2008
<a href="#">Disability Status By Sex By Age By Employment Status For The Civilian Noninstitutionalized Population 16 To 64 Years (Asian Alone) [xls]</a>	B18020D	September 23, 2008
<a href="#">Disability Status By Sex By Age By Employment Status For The Civilian Noninstitutionalized Population 16 To 64 Years (Native Hawaiian And Other Pacific Islander Alone) [xls]</a>	B18020E	September 23, 2008

<a href="#">Disability Status By Sex By Age By Employment Status For The Civilian Noninstitutionalized Population 16 To 64 Years (Some Other Race Alone) [xls]</a>	B18020F	September 23, 2008
<a href="#">Disability Status By Sex By Age By Employment Status For The Civilian Noninstitutionalized Population 16 To 64 Years (Two Or More Races) [xls]</a>	B18020G	September 23, 2008
<a href="#">Disability Status By Sex By Age By Employment Status For The Civilian Noninstitutionalized Population 16 To 64 Years (White Alone, Not Hispanic Or Latino) [xls]</a>	B18020H	September 23, 2008
<a href="#">Disability Status By Sex By Age By Employment Status For The Civilian Noninstitutionalized Population 16 To 64 Years (Hispanic Or Latino) [xls]</a>	B18020I	September 23, 2008
<a href="#">Sensory Disability By Sex By Age By Employment Status For The Civilian Noninstitutionalized Population 16 To 64 Years [xls]</a>	B18021	September 23, 2008
<a href="#">Physical Disability By Sex By Age By Employment Status For The Civilian Noninstitutionalized Population 16 To 64 Years [xls]</a>	B18022	September 23, 2008
<a href="#">Mental Disability By Sex By Age By Employment Status For The Civilian Noninstitutionalized Population 16 To 64 Years [xls]</a>	B18023	September 23, 2008
<a href="#">Self-Care Disability By Sex By Age By Employment Status For The Civilian Noninstitutionalized Population 16 To 64 Years [xls]</a>	B18024	September 23, 2008
<a href="#">Go-Outside-Home Disability By Sex By Age By Employment Status For The Civilian Noninstitutionalized Population 16 To 64 Years [xls]</a>	B18025	September 23, 2008
<a href="#">Sex By Age By Employment Disability By Employment Status For The Civilian Noninstitutionalized Population 16 To 64 [xls]</a>	B18026	September 23, 2008
<a href="#">Disability Status By Sex By Age By Poverty Status For The Civilian Noninstitutionalized Population 5 Years And Over [xls]</a>	B18030	September 23, 2008
<a href="#">Sensory Disability By Sex By Age By Poverty Status For The Civilian Noninstitutionalized Population 5 Years And Over [xls]</a>	B18031	September 23, 2008
<a href="#">Physical Disability By Sex By Age By Poverty Status For The Civilian Noninstitutionalized Population 5 Years And Over [xls]</a>	B18032	September 23, 2008
<a href="#">Mental Disability By Sex By Age By Poverty Status For The Civilian Noninstitutionalized Population 5 Years And Over [xls]</a>	B18033	September 23, 2008
<a href="#">Self-Care Disability By Sex By Age By Poverty Status For The Civilian Noninstitutionalized Population 5 Years And Over [xls]</a>	B18034	September 23, 2008
<a href="#">Go-Outside-Home Disability By Sex By Age By Poverty Status For The Civilian Noninstitutionalized Population 16 Years And Over [xls]</a>	B18035	September 23, 2008



<a href="#">Employment Disability By Sex By Age By Poverty Status For The Civilian Noninstitutionalized Population 16 To 64 Years [xls]</a>	B18036	September 23, 2008
<a href="#">Median Earnings In The Past 12 Months (In 2007 Inflation-Adjusted Dollars) By Disability Status By Sex For The Civilian Noninstitutionalized Population 16 Years And Over With Earnings [xls]</a>	B18040	September 23, 2008
<a href="#">Median Earnings In The Past 12 Months (In 2007 Inflation-Adjusted Dollars) By Sensory Disability By Sex For The Civilian Noninstitutionalized Population 16 Years And Over With Earnings [xls]</a>	B18041	September 23, 2008
<a href="#">Median Earnings In The Past 12 Months (In 2007 Inflation-Adjusted Dollars) By Physical Disability By Sex For The Civilian Noninstitutionalized Population 16 Years And Over With Earnings [xls]</a>	B18042	September 23, 2008
<a href="#">Median Earnings In The Past 12 Months (In 2007 Inflation-Adjusted Dollars) By Mental Disability By Sex For The Civilian Noninstitutionalized Population 16 Years And Over With Earnings [xls]</a>	B18043	September 23, 2008
<a href="#">Median Earnings In The Past 12 Months (In 2007 Inflation-Adjusted Dollars) By Self-Care Disability By Sex For The Civilian Noninstitutionalized Population 16 Years And Over With Earnings [xls]</a>	B18044	September 23, 2008
<a href="#">Median Earnings In The Past 12 Months (In 2007 Inflation-Adjusted Dollars) By Go-Outside-Home Disability By Sex For The Civilian Noninstitutionalized Population 16 Years And Over With Earnings [xls]</a>	B18045	September 23, 2008
<a href="#">Median Earnings In The Past 12 Months (In 2007 Inflation-Adjusted Dollars) By Employment Disability By Sex For The Civilian Noninstitutionalized Population 16 To 64 Years With Earnings [xls]</a>	B18046	September 23, 2008

<b>Earnings</b>		
Table Title	Table ID	Release Date
<a href="#">Sex By Earnings In The Past 12 Months (In 2007 Inflation-Adjusted Dollars) For The Population 16 Years And Over With Earnings In The Past 12 Months [xls]</a>	B20001	September 23, 2008
<a href="#">Median Earnings In The Past 12 Months (In 2007 Inflation-Adjusted Dollars) By Sex For The Population 16 Years And Over With Earnings In The Past 12 Months [xls]</a>	B20002	September 23, 2008
<a href="#">Aggregate Earnings In The Past 12 Months (In 2007 Inflation-Adjusted Dollars) By Sex By Work Experience For The Population 16 Years And Over With Earnings [xls]</a>	B20003	September 23, 2008
<a href="#">Median Earnings In The Past 12 Months (In 2007 Inflation-Adjusted Dollars) By Sex By Educational Attainment For The Population 25 Years And Over [xls]</a>	B20004	September 23, 2008
<a href="#">Sex By Work Experience In The Past 12 Months By Earnings In The Past 12 Months (In 2007 Inflation-Adjusted Dollars) For The Population 16 Years And Over [xls]</a>	B20005	September 23, 2008
<a href="#">Sex By Work Experience In The Past 12 Months By Earnings In The Past 12 Months (In 2007 Inflation-Adjusted Dollars) For The Population 16 Years And Over (White Alone) [xls]</a>	B20005A	September 23, 2008
<a href="#">Sex By Work Experience In The Past 12 Months By Earnings In The Past 12 Months (In 2007 Inflation-Adjusted Dollars) For The Population 16 Years And Over (Black Or African American Alone) [xls]</a>	B20005B	September 23, 2008
<a href="#">Sex By Work Experience In The Past 12 Months By Earnings In The Past 12 Months (In 2007 Inflation-Adjusted Dollars) For The Population 16 Years And Over (American Indian And Alaska Native Alone) [xls]</a>	B20005C	September 23, 2008
<a href="#">Sex By Work Experience In The Past 12 Months By Earnings In The Past 12 Months (In 2007 Inflation-Adjusted Dollars) For The Population 16 Years And Over (Asian Alone) [xls]</a>	B20005D	September 23, 2008
<a href="#">Sex By Work Experience In The Past 12 Months By Earnings In The Past 12 Months (In 2007 Inflation-Adjusted Dollars) For The Population 16 Years And Over (Native Hawaiian And Other Pacific Islander Alone) [xls]</a>	B20005E	September 23, 2008
<a href="#">Sex By Work Experience In The Past 12 Months By Earnings In The Past 12 Months (In 2007 Inflation-Adjusted Dollars) For The Population 16 Years And Over (Some Other Race Alone) [xls]</a>	B20005F	September 23, 2008

<a href="#">Sex By Work Experience In The Past 12 Months By Earnings In The Past 12 Months (In 2007 Inflation-Adjusted Dollars) For The Population 16 Years And Over (Two Or More Races) [xls]</a>	B20005G	August 26, 2008
<a href="#">Sex By Work Experience In The Past 12 Months By Earnings In The Past 12 Months (In 2007 Inflation-Adjusted Dollars) For The Population 16 Years And Over (White Alone, Not Hispanic Or Latino) [xls]</a>	B20005H	August 26, 2008
<a href="#">Sex By Work Experience In The Past 12 Months By Earnings In The Past 12 Months (In 2007 Inflation-Adjusted Dollars) For The Population 16 Years And Over (Hispanic Or Latino) [xls]</a>	B20005I	August 26, 2008
<a href="#">Median Earnings In The Past 12 Months (In 2007 Inflation-Adjusted Dollars) By Sex By Work Experience In The Past 12 Months For The Population 16 Years And Over With Earnings In The Past 12 Months [xls]</a>	B20017	August 26, 2008
<a href="#">Median Earnings In The Past 12 Months (In 2007 Inflation-Adjusted Dollars) By Sex By Work Experience In The Past 12 Months For The Population 16 Years And Over With Earnings In The Past 12 Months (White Alone) [xls]</a>	B20017A	August 26, 2008
<a href="#">Median Earnings In The Past 12 Months (In 2007 Inflation-Adjusted Dollars) By Sex By Work Experience In The Past 12 Months For The Population 16 Years And Over With Earnings In The Past 12 Months (Black Or African American Alone) [xls]</a>	B20017B	August 26, 2008
<a href="#">Median Earnings In The Past 12 Months (In 2007 Inflation-Adjusted Dollars) By Sex By Work Experience In The Past 12 Months For The Population 16 Years And Over With Earnings In The Past 12 Months (American Indian And Alaska Native Alone) [xls]</a>	B20017C	August 26, 2008
<a href="#">Median Earnings In The Past 12 Months (In 2007 Inflation-Adjusted Dollars) By Sex By Work Experience In The Past 12 Months For The Population 16 Years And Over With Earnings In The Past 12 Months (Asian Alone) [xls]</a>	B20017D	August 26, 2008
<a href="#">Median Earnings In The Past 12 Months (In 2007 Inflation-Adjusted Dollars) By Sex By Work Experience In The Past 12 Months For The Population 16 Years And Over With Earnings In The Past 12 Months (Native Hawaiian And Other Pacific Islander Alone) [xls]</a>	B20017E	August 26, 2008
<a href="#">Median Earnings In The Past 12 Months (In 2007 Inflation-Adjusted Dollars) By Sex By Work Experience In The Past 12 Months For The Population 16 Years And Over With Earnings In The Past 12 Months (Some Other Race Alone) [xls]</a>	B20017F	August 26, 2008

<a href="#">Median Earnings In The Past 12 Months (In 2007 Inflation-Adjusted Dollars) By Sex By Work Experience In The Past 12 Months For The Population 16 Years And Over With Earnings In The Past 12 Months (Two Or More Races) [xls]</a>	B20017G	August 26, 2008
<a href="#">Median Earnings In The Past 12 Months (In 2007 Inflation-Adjusted Dollars) By Sex By Work Experience In The Past 12 Months For The Population 16 Years And Over With Earnings In The Past 12 Months (White Alone, Not Hispanic Or Latino) [xls]</a>	B20017H	August 26, 2008
<a href="#">Median Earnings In The Past 12 Months (In 2007 Inflation-Adjusted Dollars) By Sex By Work Experience In The Past 12 Months For The Population 16 Years And Over With Earnings (Hispanic Or Latino) [xls]</a>	B20017I	August 26, 2008
<b>Educational Attainment</b>		
Table Title	Table ID	Release Date
<a href="#">Sex By Educational Attainment For The Population 25 Years And Over (Asian Alone) [xls]</a>	B15002D	September 23, 2008
<a href="#">Sex By Educational Attainment For The Population 25 Years And Over [xls]</a>	B15002	September 23, 2008
<a href="#">Sex By Age By Educational Attainment For The Population 18 Years And Over [xls]</a>	B15001	September 23, 2008
<a href="#">Sex By Educational Attainment For The Population 25 Years And Over (Black Or African American Alone) [xls]</a>	B15002B	September 23, 2008
<a href="#">Sex By Educational Attainment For The Population 25 Years And Over (American Indian And Alaska Native Alone) [xls]</a>	B15002C	September 23, 2008
<a href="#">Sex By Educational Attainment For The Population 25 Years And Over (Native Hawaiian And Other Pacific Islander Alone) [xls]</a>	B15002E	September 23, 2008
<a href="#">Sex By Educational Attainment For The Population 25 Years And Over (Some Other Race Alone) [xls]</a>	B15002F	September 23, 2008
<a href="#">Poverty Status In The Past 12 Months By Sex By Educational Attainment For The Population 25 Years And Over [xls]</a>	B15004	September 23, 2008
<a href="#">Sex By Educational Attainment For The Population 25 Years And Over (Two Or More Races) [xls]</a>	B15002G	September 23, 2008
<a href="#">Sex By Educational Attainment For The Population 25 Years And Over (White Alone, Not Hispanic Or Latino) [xls]</a>	B15002H	September 23, 2008
<a href="#">Sex By Educational Attainment For The Population 25 Years And Over (Hispanic Or Latino) [xls]</a>	B15002I	September 23, 2008
<a href="#">Sex By Educational Attainment For The Population 25 Years And Over (White Alone) [xls]</a>	B15002A	September 23, 2008

<b>Employment Status</b>		
Table Title	Table ID	Release Date
<a href="#">Presence Of Own Children Under 18 Years In Married-Couple Families By Work Experience Of Householder And Spouse [xls]</a>	B23010	September 23, 2008
<a href="#">Presence Of Own Children Under 18 Years By Family Type By Number Of Workers In Family In The Past 12 Months [xls]</a>	B23009	September 23, 2008
<a href="#">Age Of Own Children Under 18 Years In Families And Subfamilies By Living Arrangements By Employment Status Of Parents [xls]</a>	B23008	September 23, 2008
<a href="#">Sex By Age By Employment Status For The Population 16 Years And Over (American Indian And Alaska Native Alone) [xls]</a>	B23002C	September 23, 2008
<a href="#">Sex By Age By Employment Status For The Population 16 Years And Over (Asian Alone) [xls]</a>	B23002D	September 23, 2008
<a href="#">Sex By Age By Employment Status For The Population 16 Years And Over (Native Hawaiian And Other Pacific Islander Alone) [xls]</a>	B23002E	September 23, 2008
<a href="#">Sex By Age By Employment Status For The Population 16 Years And Over (Some Other Race Alone) [xls]</a>	B23002F	September 23, 2008
<a href="#">Sex By Age By Employment Status For The Population 16 Years And Over (Two Or More Races) [xls]</a>	B23002G	September 23, 2008
<a href="#">Sex By Age By Employment Status For The Population 16 Years And Over (Hispanic Or Latino) [xls]</a>	B23002I	September 23, 2008
<a href="#">Sex By Age By Employment Status For The Population 16 Years And Over (White Alone) [xls]</a>	B23002A	September 23, 2008
<a href="#">Sex By Age By Employment Status For The Population 16 Years And Over [xls]</a>	B23001	September 23, 2008
<a href="#">Presence Of Own Children Under 18 Years By Age Of Own Children Under 18 Years By Employment Status For Females 20 To 64 Years [xls]</a>	B23003	September 23, 2008
<a href="#">Poverty Status In The Past 12 Months By Disability Status By Employment Status For The Population 20 To 64 Years [xls]</a>	B23005	September 23, 2008
<a href="#">Educational Attainment By Employment Status For The Population 25 To 64 Years [xls]</a>	B23006	September 23, 2008
<a href="#">Presence Of Own Children Under 18 Years By Family Type By Employment Status [xls]</a>	B23007	September 23, 2008
<a href="#">Sex By Age By Employment Status For The Population 16 Years And Over (Black Or African American Alone) [xls]</a>	B23002B	September 23, 2008
<a href="#">Sex By Age By Employment Status For The Population 16 Years And Over (White Alone, Not Hispanic Or Latino) [xls]</a>	B23002H	September 23, 2008

<b>Fertility</b>		
Table Title	Table ID	Release Date
<a href="#">Women 15 To 50 Years Who Had A Birth In The Past 12 Months By Marital Status And Age [xls]</a>	B13002	September 23, 2008
<a href="#">Women 15 To 50 Years Who Had A Birth In The Past 12 Months By Marital Status (Hispanic Or Latino) [xls]</a>	B13004I	September 23, 2008
<a href="#">Women 15 To 50 Years Who Had A Birth In The Past 12 Months By Marital Status (White Alone, Not Hispanic Or Latino) [xls]</a>	B13004H	September 23, 2008
<a href="#">Women 15 To 50 Years Who Had A Birth In The Past 12 Months By Marital Status (Asian Alone) [xls]</a>	B13004D	September 23, 2008
<a href="#">Women 15 To 50 Years Who Had A Birth In The Past 12 Months By Marital Status (American Indian And Alaska Native Alone) [xls]</a>	B13004C	September 23, 2008
<a href="#">Women 15 To 50 Years Who Had A Birth In The Past 12 Months By Marital Status (Black Or African American Alone) [xls]</a>	B13004B	September 23, 2008
<a href="#">Women 15 To 50 Years Who Had A Birth In The Past 12 Months By Marital Status And Poverty Status In The Past 12 Months [xls]</a>	B13010	September 23, 2008
<a href="#">Women 15 To 50 Years Who Had A Birth In The Past 12 Months By Marital Status (White Alone) [xls]</a>	B13004A	September 23, 2008
<a href="#">Women 15 To 50 Years Who Had A Birth In The Past 12 Months By Marital Status And Presence Of Unmarried Partner [xls]</a>	B13004	September 23, 2008
<a href="#">Women 15 To 50 Years Who Had A Birth In The Past 12 Months By Marital Status (Some Other Race Alone) [xls]</a>	B13004F	September 23, 2008
<a href="#">Women 15 To 50 Years Who Had A Birth In The Past 12 Months By Marital Status (Native Hawaiian And Other Pacific Islander Alone) [xls]</a>	B13004E	September 23, 2008
<a href="#">Women 15 To 50 Years Who Had A Birth In The Past 12 Months By Marital Status And Citizenship Status [xls]</a>	B13008	September 23, 2008
<a href="#">Women 16 To 50 Years Who Had A Birth In The Past 12 Months By Marital Status And Labor Force Status [xls]</a>	B13012	September 23, 2008
<a href="#">Marital Status By Age For Women 15 To 50 Years [xls]</a>	B13001	September 23, 2008
<a href="#">Women 15 To 50 Years Who Had A Birth In The Past 12 Months By Marital Status (Two Or More Races) [xls]</a>	B13004G	September 23, 2008
<a href="#">Women 15 To 50 Years Who Had A Birth In The Past 12 Months By Marital Status And Educational Attainment [xls]</a>	B13014	September 23, 2008
<b>Food Stamps</b>		
Table Title	Table ID	Release Date

<a href="#">Receipt Of Food Stamps In The Past 12 Months By Race Of Householder (Asian Alone) [xls]</a>	B22005D	September 23, 2008
<a href="#">Aggregate Food Stamp Benefits In The Past 12 Months (In 2007 Inflation-Adjusted Dollars) For Households [xls]</a>	B22009	September 23, 2008
<a href="#">Receipt Of Food Stamps In The Past 12 Months By Family Type By Number Of Workers In Family In The Past 12 Months [xls]</a>	B22007	September 23, 2008
<a href="#">Receipt Of Food Stamps In The Past 12 Months By Race Of Householder (Hispanic Or Latino) [xls]</a>	B22005I	September 23, 2008
<a href="#">Receipt Of Food Stamps In The Past 12 Months By Race Of Householder (White Alone, Not Hispanic Or Latino) [xls]</a>	B22005H	September 23, 2008
<a href="#">Receipt Of Food Stamps In The Past 12 Months By Race Of Householder (Native Hawaiian And Other Pacific Islander Alone) [xls]</a>	B22005E	September 23, 2008
<a href="#">Median Household Income In The Past 12 Months (In 2007 Inflation-Adjusted Dollars) By Receipt Of Food Stamps In The Past 12 Months [xls]</a>	B22008	September 23, 2008
<a href="#">Receipt Of Food Stamps In The Past 12 Months By Race Of Householder (American Indian And Alaska Native Alone) [xls]</a>	B22005C	September 23, 2008
<a href="#">Receipt Of Food Stamps In The Past 12 Months By Race Of Householder (Two Or More Races) [xls]</a>	B22005G	September 23, 2008
<a href="#">Receipt Of Food Stamps In The Past 12 Months By Race Of Householder (Some Other Race Alone) [xls]</a>	B22005F	September 23, 2008
<a href="#">Receipt Of Food Stamps In The Past 12 Months By Presence Of People 60 Years And Over For Households [xls]</a>	B22001	September 23, 2008
<a href="#">Receipt Of Food Stamps In The Past 12 Months By Presence Of Children Under 18 Years By Household Type For Households [xls]</a>	B22002	September 23, 2008
<a href="#">Receipt Of Food Stamps In The Past 12 Months By Poverty Status In The Past 12 Months For Households [xls]</a>	B22003	September 23, 2008
<a href="#">Receipt Of Food Stamps In The Past 12 Months By Disability Status For Households [xls]</a>	B22004	September 23, 2008
<a href="#">Receipt Of Food Stamps In The Past 12 Months By Race Of Householder (White Alone) [xls]</a>	B22005A	September 23, 2008
<a href="#">Receipt Of Food Stamps In The Past 12 Months By Race Of Householder (Black Or African American Alone) [xls]</a>	B22005B	September 23, 2008

<b>Foreign-Born Place of Birth</b>		
Table Title	Table ID	Release Date
<a href="#">Place Of Birth For The Foreign-Born Population [xls]</a>	B05006	September 23, 2008
<b>Grandparents</b>		
Table Title	Table ID	Release Date
<a href="#">Grandparents Living With Own Grandchildren Under 18 Years By Responsibility For Own Grandchildren By Presence Of Parent Of Grandchildren And Age Of Grandparent [xls]</a>	B10051	September 23, 2008
<a href="#">Grandparents Living With Own Grandchildren Under 18 Years By Responsibility For Own Grandchildren By Length Of Time Responsible For Own Grandchildren For The Population 30 Years And Over [xls]</a>	B10050	September 23, 2008
<a href="#">Median Family Income For Families With Grandparent Householders And/Or Spouses Living With Own Grandchildren Under 18 Years By Responsibility For Own Grandchildren And Presence Of Parent Of Grandchildren [xls]</a>	B10010	September 23, 2008
<a href="#">Grandchildren Under 18 Years Living With A Grandparent Householder By Grandparent Responsibility And Presence Of Parent [xls]</a>	B10002	September 23, 2008
<a href="#">Grandchildren Under 18 Years Living With A Grandparent Householder By Age Of Grandchild [xls]</a>	B10001	September 23, 2008
<a href="#">Grandparents Living With Own Grandchildren Under 18 Years By Responsibility For Own Grandchildren, Presence Of Parent Of Grandchildren And Age Of Grandparent (Black Or African American Alone) [xls]</a>	B10051B	September 23, 2008
<a href="#">Grandparents Living With Own Grandchildren Under 18 Years By Responsibility For Own Grandchildren And Age Of Grandparent (White Alone) [xls]</a>	B10051A	September 23, 2008
<a href="#">Grandparents Living With Own Grandchildren Under 18 Years By Responsibility For Own Grandchildren, Presence Of Parent Of Grandchildren And Age Of Grandparent (American Indian And Alaska Native Alone) [xls]</a>	B10051C	September 23, 2008
<a href="#">Units In Structure Of Grandparents Living With Own Grandchildren Under 18 Years By Responsibility For Own Grandchildren And Age Of Grandparent [xls]</a>	B10060	September 23, 2008
<a href="#">Employment Status Of Grandparents Living With Own Grandchildren Under 18 Years By Responsibility For Own Grandchildren And Age Of Grandparent [xls]</a>	B10058	September 23, 2008



<a href="#">Sex Of Grandparents Living With Own Grandchildren Under 18 Years By Responsibility For Own Grandchildren And Age Of Grandparent [xls]</a>	B10056	September 23, 2008
<a href="#">Disability Status Of Grandparents Living With Own Grandchildren Under 18 Years By Responsibility For Own Grandchildren And Age Of Grandparent [xls]</a>	B10055	September 23, 2008
<a href="#">Language And Ability To Speak English Of Grandparents Living With Own Grandchildren Under 18 Years By Responsibility For Own Grandchildren And Age Of Grandparent [xls]</a>	B10054	September 23, 2008
<a href="#">Tenure Of Grandparents Living With Own Grandchildren Under 18 Years By Responsibility For Own Grandchildren And Age Of Grandparent [xls]</a>	B10061	September 23, 2008
<a href="#">Citizenship Status By Grandparents Responsible For Own Grandchildren Under 18 Years By Age Of Grandparent [xls]</a>	B10053	September 23, 2008
<a href="#">Grandparents Living With Own Grandchildren Under 18 Years By Responsibility For Own Grandchildren, Presence Of Parent Of Grandchildren And Age Of Grandparent (Hispanic Or Latino) [xls]</a>	B10051I	September 23, 2008
<a href="#">Grandparents Living With Own Grandchildren Under 18 Years By Responsibility For Own Grandchildren, Presence Of Parent Of Grandchildren And Age Of Grandparent (White Alone, Not Hispanic Or Latino) [xls]</a>	B10051H	September 23, 2008
<a href="#">Grandparents Living With Own Grandchildren Under 18 Years By Responsibility For Own Grandchildren, Presence Of Parent Of Grandchildren And Age Of Grandparent (Two Or More Races) [xls]</a>	B10051G	September 23, 2008
<a href="#">Grandparents Living With Own Grandchildren Under 18 Years By Responsibility For Own Grandchildren, Presence Of Parent Of Grandchildren And Age Of Grandparent (Some Other Race Alone) [xls]</a>	B10051F	September 23, 2008
<a href="#">Grandparents Living With Own Grandchildren Under 18 Years By Responsibility For Own Grandchildren, Presence Of Parent Of Grandchildren And Age Of Grandparent (Native Hawaiian And Other Pacific Islander Alone) [xls]</a>	B10051E	September 23, 2008
<a href="#">Grandparents Living With Own Grandchildren Under 18 Years By Responsibility For Own Grandchildren, Presence Of Parent Of Grandchildren And Age Of Grandparent (Asian Alone) [xls]</a>	B10051D	September 23, 2008
<a href="#">Households With Grandparents Living With Own Grandchildren Under 18 Years By Responsibility For Own Grandchildren And Presence Of Parent Of Grandchildren [xls]</a>	B10063	September 23, 2008

<a href="#">Marital Status By Grandparents Living With Own Grandchildren Under 18 Years By Responsibility For Own Grandchildren And Age Of Grandparent [xls]</a>	B10057	September 23, 2008
<a href="#">Poverty Status In The Past 12 Months Of Grandparents Living With Own Grandchildren Under 18 Years By Responsibility For Own Grandchildren And Age Of Grandparent [xls]</a>	B10059	September 23, 2008
<b>Group Quarters</b>		
Table Title	Table ID	Release Date
<a href="#">Group Quarters Population [xls]</a>	B26001	September 23, 2008
<b>Heating Fuel</b>		
Table Title	Table ID	Release Date
<a href="#">House Heating Fuel [xls]</a>	B25040	September 23, 2008
<a href="#">Tenure By House Heating Fuel [xls]</a>	B25117	September 23, 2008
<b>Hispanic Origin</b>		
Table Title	Table ID	Release Date
<a href="#">Hispanic Or Latino Origin By Race [xls]</a>	B03002	September 23, 2008
<a href="#">Hispanic Or Latino Origin By Specific Origin [xls]</a>	B03001	September 23, 2008
<b>Household Type and Household Size</b>		
Table Title	Table ID	Release Date
<a href="#">Tenure By Plumbing Facilities By Occupants Per Room [xls]</a>	B25016	September 23, 2008
<a href="#">Occupants Per Room (Asian Alone Householder) [xls]</a>	B25014D	September 23, 2008
<a href="#">Occupants Per Room (American Indian And Alaska Native Alone Householder) [xls]</a>	B25014C	September 23, 2008
<a href="#">Occupants Per Room (Black Or African American Alone Householder) [xls]</a>	B25014B	September 23, 2008
<a href="#">Occupants Per Room (White Alone Householder) [xls]</a>	B25014A	September 23, 2008
<a href="#">Tenure By Occupants Per Room [xls]</a>	B25014	September 23, 2008
<a href="#">Tenure By Families And Presence Of Own Children [xls]</a>	B25012	September 23, 2008
<a href="#">Tenure By Household Type (Including Living Alone) And Age Of Householder [xls]</a>	B25011	September 23, 2008
<a href="#">Average Household Size Of Occupied Housing Units By Tenure [xls]</a>	B25010	September 23, 2008
<a href="#">Occupants Per Room (Native Hawaiian And Other Pacific Islander Alone Householder) [xls]</a>	B25014E	September 23, 2008

<a href="#">Occupants Per Room (Some Other Race Alone Householder) [xls]</a>	B25014F	September 23, 2008
<a href="#">Occupants Per Room (White Alone, Not Hispanic Or Latino Householder) [xls]</a>	B25014H	September 23, 2008
<a href="#">Occupants Per Room (Two Or More Races Householder) [xls]</a>	B25014G	September 23, 2008
<a href="#">Tenure By Household Size [xls]</a>	B25009	September 23, 2008
<a href="#">Tenure By Household Size By Age Of Householder [xls]</a>	B25116	September 23, 2008
<a href="#">Tenure By Household Type And Presence And Age Of Own Children [xls]</a>	B25115	September 23, 2008
<a href="#">Tenure By Age Of Householder By Occupants Per Room [xls]</a>	B25015	September 23, 2008
<a href="#">Occupants Per Room (Hispanic Or Latino Householder) [xls]</a>	B25014I	September 23, 2008
<b>Households and Families</b>		
Table Title	Table ID	Release Date
<a href="#">Household Type By Relatives And Nonrelatives For Population In Households (White Alone, Not Hispanic Or Latino) [xls]</a>	B11002H	September 23, 2008
<a href="#">Household Type By Relatives And Nonrelatives For Population In Households (Hispanic Or Latino) [xls]</a>	B11002I	September 23, 2008
<a href="#">Family Type By Presence And Age Of Own Children Under 18 Years [xls]</a>	B11003	September 23, 2008
<a href="#">Family Type By Presence And Age Of Related Children Under 18 Years [xls]</a>	B11004	September 23, 2008
<a href="#">Household Type By Relatives And Nonrelatives For Population In Households (Two Or More Races) [xls]</a>	B11002G	September 23, 2008
<a href="#">Households By Presence Of People Under 18 Years By Household Type [xls]</a>	B11005	September 23, 2008
<a href="#">Households By Presence Of People 60 Years And Over By Household Type [xls]</a>	B11006	September 23, 2008
<a href="#">Households By Presence Of People 65 Years And Over, Household Size And Household Type [xls]</a>	B11007	September 23, 2008
<a href="#">Unmarried-Partner Households By Sex Of Partner [xls]</a>	B11009	September 23, 2008
<a href="#">Nonfamily Households By Sex Of Householder By Living Alone By Age Of Householder [xls]</a>	B11010	September 23, 2008
<a href="#">Household Type By Units In Structure [xls]</a>	B11011	September 23, 2008
<a href="#">Household Type By Tenure [xls]</a>	B11012	September 23, 2008
<a href="#">Subfamily Type By Presence Of Own Children Under 18 Years [xls]</a>	B11013	September 23, 2008
<a href="#">Population In Subfamilies By Subfamily Type By Relationship [xls]</a>	B11014	September 23, 2008
<a href="#">Households By Presence Of Nonrelatives [xls]</a>	B11015	September 23, 2008

<a href="#">Household Type By Household Size [xls]</a>	B11016	September 23, 2008
<a href="#">Household Type By Relatives And Nonrelatives For Population In Households (Some Other Race Alone) [xls]</a>	B11002F	September 23, 2008
<a href="#">Household Type By Relatives And Nonrelatives For Population In Households (Native Hawaiian And Other Pacific Islander Alone) [xls]</a>	B11002E	September 23, 2008
<a href="#">Household Type (Including Living Alone) (Hispanic Or Latino) [xls]</a>	B11001I	September 23, 2008
<a href="#">Household Type (Including Living Alone) [xls]</a>	B11001	September 23, 2008
<a href="#">Household Type (Including Living Alone) (White Alone) [xls]</a>	B11001A	September 23, 2008
<a href="#">Household Type (Including Living Alone) (Black Or African American Alone) [xls]</a>	B11001B	September 23, 2008
<a href="#">Household Type (Including Living Alone) (American Indian And Alaska Native Alone) [xls]</a>	B11001C	September 23, 2008
<a href="#">Household Type (Including Living Alone) (Asian Alone) [xls]</a>	B11001D	September 23, 2008
<a href="#">Household Type (Including Living Alone) (Native Hawaiian And Other Pacific Islander Alone) [xls]</a>	B11001E	September 23, 2008
<a href="#">Household Type (Including Living Alone) (Some Other Race Alone) [xls]</a>	B11001F	September 23, 2008
<a href="#">Household Type (Including Living Alone) (Two Or More Races) [xls]</a>	B11001G	September 23, 2008
<a href="#">Household Type By Relatives And Nonrelatives For Population In Households (Asian Alone) [xls]</a>	B11002D	September 23, 2008
<a href="#">Household Type By Relatives And Nonrelatives For Population In Households (American Indian And Alaska Native Alone) [xls]</a>	B11002C	September 23, 2008
<a href="#">Household Type By Relatives And Nonrelatives For Population In Households (Black Or African American Alone) [xls]</a>	B11002B	September 23, 2008
<a href="#">Household Type By Relatives And Nonrelatives For Population In Households (White Alone) [xls]</a>	B11002A	September 23, 2008
<a href="#">Household Type By Relatives And Nonrelatives For Population In Households [xls]</a>	B11002	September 23, 2008
<a href="#">Household Type (Including Living Alone) (White Alone, Not Hispanic Or Latino) [xls]</a>	B11001H	September 23, 2008

<b>Imputation</b>		
Table Title	Table ID	Release Date
<a href="#">Imputation Of Marital Status For Females 15 To 50 Years [xls]</a>	B99131	September 23, 2008
<a href="#">Imputation Of Fertility Of Women 15 To 50 Years [xls]</a>	B99132	September 23, 2008
<a href="#">Imputation Of School Enrollment For The Population 3 Years And Over [xls]</a>	B99141	September 23, 2008
<a href="#">Imputation Of Grade Enrolled For The Population 3 Years And Over Enrolled In School [xls]</a>	B99142	September 23, 2008
<a href="#">Imputation Of Educational Attainment For The Population 25 Years And Over [xls]</a>	B99151	September 23, 2008
<a href="#">Imputation Of Language Status For The Population 5 Years And Over [xls]</a>	B99161	September 23, 2008
<a href="#">Imputation Of Language Spoken At Home For The Population 5 Years And Over [xls]</a>	B99162	September 23, 2008
<a href="#">Imputation Of Ability To Speak English For The Population 5 Years And Over [xls]</a>	B99163	September 23, 2008
<a href="#">Imputation Of Poverty Status In The Past 12 Months For Unrelated Individuals [xls]</a>	B99171	August 26, 2008
<a href="#">Imputation Of Marital Status For The Population 15 Years And Over [xls]</a>	B99121	September 23, 2008
<a href="#">Imputation Of Industry For The Full-Time, Year-Round Civilian Employed Population 16 Years And Over [xls]</a>	B99244	September 23, 2008
<a href="#">Imputation Of Class Of Worker For The Civilian Employed Population 16 Years And Over [xls]</a>	B99243	September 23, 2008
<a href="#">Imputation Of Period Of Military Service For Civilian Veterans 18 Years And Over [xls]</a>	B99212	September 23, 2008
<a href="#">Imputation Of Disability Items For The Civilian Noninstitutionalized Population 5 Years And Over [xls]</a>	B99181	September 23, 2008
<a href="#">Imputation Of Food Stamps Receipt [xls]</a>	B99221	September 23, 2008
<a href="#">Imputation Of Employment Status For The Population 16 Years And Over [xls]</a>	B99231	September 23, 2008
<a href="#">Imputation Of Work Status In The Past 12 Months For The Population 16 Years And Over [xls]</a>	B99232	September 23, 2008
<a href="#">Imputation Of Usual Hours Worked Per Week In The Past 12 Months For The Population 16 Years And Over [xls]</a>	B99233	September 23, 2008
<a href="#">Imputation Of Weeks Worked In The Past 12 Months For The Population 16 Years And Over [xls]</a>	B99234	September 23, 2008
<a href="#">Imputation Of Industry For The Civilian Employed Population 16 Years And Over [xls]</a>	B99241	September 23, 2008

<a href="#">Imputation Of Occupation For The Civilian Employed Population 16 Years And Over [xls]</a>	B99242	September 23, 2008
<a href="#">Imputation Of Poverty Status In The Past 12 Months For Families [xls]</a>	B99172	August 26, 2008
<a href="#">Imputation Of Occupation For The Full-Time, Year-Round Civilian Employed Population 16 Years And Over [xls]</a>	B99245	September 23, 2008
<a href="#">Imputation Of Class Of Worker For The Full-Time, Year-Round Civilian Employed Population 16 Years And Over [xls]</a>	B99246	September 23, 2008
<a href="#">Imputation Of Mortgage Status [xls]</a>	B992521	September 23, 2008
<a href="#">Imputation Of Price Asked [xls]</a>	B992520	September 23, 2008
<a href="#">Imputation Of Tenure [xls]</a>	B99252	September 23, 2008
<a href="#">Imputation Of Value [xls]</a>	B992519	September 23, 2008
<a href="#">Imputation Of Gross Rent [xls]</a>	B992518	September 23, 2008
<a href="#">Imputation Of Rent Asked [xls]</a>	B992516	September 23, 2008
<a href="#">Imputation Of Contract Rent [xls]</a>	B992515	September 23, 2008
<a href="#">Imputation Of Meals Included In Rent [xls]</a>	B992514	September 23, 2008
<a href="#">Imputation Of Telephone Service Available [xls]</a>	B992513	September 23, 2008
<a href="#">Imputation Of Mortgage Status And Selected Monthly Owner Costs [xls]</a>	B992522	September 23, 2008
<a href="#">Imputation Of Selected Monthly Owner Costs For Owner-Occupied Housing Units [xls]</a>	B992523	September 23, 2008
<a href="#">Imputation Of Family Income In The Past 12 Months -- Percent Of Income Imputed [xls]</a>	B99193	August 26, 2008
<a href="#">Imputation Of Kitchen Facilities [xls]</a>	B992510	September 23, 2008
<a href="#">Imputation Of House Heating Fuel [xls]</a>	B992511	September 23, 2008
<a href="#">Imputation Of Bedrooms [xls]</a>	B99258	September 23, 2008
<a href="#">Imputation Of Year Householder Moved Into Unit [xls]</a>	B99257	September 23, 2008
<a href="#">Imputation Of Year Structure Built [xls]</a>	B99256	September 23, 2008
<a href="#">Imputation Of Units In Structure [xls]</a>	B99255	September 23, 2008
<a href="#">Imputation Of Rooms [xls]</a>	B99254	September 23, 2008
<a href="#">Imputation Of Vacancy Status [xls]</a>	B99253	September 23, 2008
<a href="#">Imputation Of Vehicles Available [xls]</a>	B992512	September 23, 2008
<a href="#">Imputation Of Length Of Time Grandparent Responsible For Own Grandchildren Under 18 Years For The Population 30 Years And Over [xls]</a>	B99104	September 23, 2008
<a href="#">Imputation Of Mobility Status For The Population 1 Year And Over [xls]</a>	B99071	September 23, 2008
<a href="#">Imputation Of Place Of Birth [xls]</a>	B99061	September 23, 2008

<a href="#">Imputation Of Individuals' Income In The Past 12 Months For The Population 15 Years And Over - Percent Of Income Imputed [xls]</a>	B99191	August 26, 2008
<a href="#">Imputation Of Employment Disability For The Civilian Noninstitutionalized Population 16 To 64 Years [xls]</a>	B99187	September 23, 2008
<a href="#">Imputation Of Go-Outside-Home Disability For The Civilian Noninstitutionalized Population 16 Years And Over [xls]</a>	B99186	September 23, 2008
<a href="#">Imputation Of Self-Care Disability For The Civilian Noninstitutionalized Population 5 Years And Over [xls]</a>	B99185	September 23, 2008
<a href="#">Imputation Of Mental Disability For The Civilian Noninstitutionalized Population 5 Years And Over [xls]</a>	B99184	September 23, 2008
<a href="#">Imputation Of Physical Disability For The Civilian Noninstitutionalized Population 5 Years And Over [xls]</a>	B99183	September 23, 2008
<a href="#">Imputation Of Sensory Disability For The Civilian Noninstitutionalized Population 5 Years And Over [xls]</a>	B99182	September 23, 2008
<a href="#">Imputation Of Year Of Entry [xls]</a>	B99052	September 23, 2008
<a href="#">Imputation Of Citizenship Status [xls]</a>	B99051	September 23, 2008
<a href="#">Imputation Of Hispanic Or Latino Origin [xls]</a>	B99031	September 23, 2008
<a href="#">Imputation Of Race [xls]</a>	B99021	September 23, 2008
<a href="#">Imputation Of Age [xls]</a>	B99012	September 23, 2008
<a href="#">Imputation Of Sex [xls]</a>	B99011	September 23, 2008
<a href="#">Imputation Of Plumbing Facilities [xls]</a>	B99259	September 23, 2008
<a href="#">Imputation Of Residence 1 Year Ago For The Population 1 Year And Over [xls]</a>	B99072	September 23, 2008
<a href="#">Imputation Of Means Of Transportation To Work [xls]</a>	B99080	September 23, 2008
<a href="#">Imputation Of Veteran Status For The Population 18 Years And Over [xls]</a>	B99211	September 23, 2008
<a href="#">Imputation Of Earnings In The Past 12 Months For The Population 16 Years And Over - Percent Of Earnings Imputed [xls]</a>	B99201	August 26, 2008
<a href="#">Imputation Of Nonfamily Household Income In The Past 12 Months -- Percent Of Income Imputed [xls]</a>	B99194	August 26, 2008
<a href="#">Imputation Of Household Income In The Past 12 Months - Percent Of Income Imputed [xls]</a>	B99192	August 26, 2008
<a href="#">Imputation Of Grandparents Responsible For Grandchildren Under 18 Years [xls]</a>	B99103	September 23, 2008
<a href="#">Imputation Of Grandparents Living With Grandchildren Under 18 Years [xls]</a>	B99102	September 23, 2008
<a href="#">Imputation Of Relationship [xls]</a>	B99092	September 23, 2008

<a href="#">Imputation Of Vehicles Available For Workers For Workplace Geography [xls]</a>	B99089	September 23, 2008
<a href="#">Imputation Of Travel Time To Work For Workplace Geography [xls]</a>	B99088	September 23, 2008
<a href="#">Imputation Of Place Of Work [xls]</a>	B99081	September 23, 2008
<a href="#">Imputation Of Private Vehicle Occupancy [xls]</a>	B99082	September 23, 2008
<a href="#">Imputation Of Time Leaving Home To Go To Work [xls]</a>	B99083	September 23, 2008
<a href="#">Imputation Of Travel Time To Work [xls]</a>	B99084	September 23, 2008
<a href="#">Imputation Of Vehicles Available For Workers [xls]</a>	B99085	September 23, 2008
<a href="#">Imputation Of Means Of Transportation To Work For Workplace Geography [xls]</a>	B99086	September 23, 2008
<a href="#">Imputation Of Time Arriving At Work From Home For Workplace Geography [xls]</a>	B99087	September 23, 2008
<b>Income</b>		
Table Title	Table ID	Release Date
<a href="#">Self-Employment Income In The Past 12 Months For Households [xls]</a>	B19053	August 26, 2008
<a href="#">Age Of Householder By Household Income In The Past 12 Months (In 2007 Inflation-Adjusted Dollars) (Two Or More Races Householder) [xls]</a>	B19037G	August 26, 2008
<a href="#">Wage Or Salary Income In The Past 12 Months For Households [xls]</a>	B19052	August 26, 2008
<a href="#">Earnings In The Past 12 Months For Households [xls]</a>	B19051	August 26, 2008
<a href="#">Aggregate Household Income In The Past 12 Months (In 2007 Inflation-Adjusted Dollars) By Age Of Householder [xls]</a>	B19050	August 26, 2008
<a href="#">Median Household Income In The Past 12 Months (In 2007 Inflation-Adjusted Dollars) By Age Of Householder [xls]</a>	B19049	August 26, 2008
<a href="#">Age Of Householder By Household Income In The Past 12 Months (In 2007 Inflation-Adjusted Dollars) (Hispanic Or Latino Householder) [xls]</a>	B19037I	August 26, 2008
<a href="#">Age Of Householder By Household Income In The Past 12 Months (In 2007 Inflation-Adjusted Dollars) (White Alone, Not Hispanic Or Latino Householder) [xls]</a>	B19037H	August 26, 2008
<a href="#">Family Income In The Past 12 Months (In 2007 Inflation-Adjusted Dollars) (Asian Alone Householder) [xls]</a>	B19101D	August 26, 2008
<a href="#">Interest, Dividends, Or Net Rental Income In The Past 12 Months For Households [xls]</a>	B19054	August 26, 2008



<a href="#">Household Income In The Past 12 Months (In 2007 Inflation-Adjusted Dollars) [xls]</a>	B19001	August 26, 2008
<a href="#">Median Household Income In The Past 12 Months (In 2007 Inflation-Adjusted Dollars) (Hispanic Or Latino Householder) [xls]</a>	B19013I	August 26, 2008
<a href="#">Median Household Income In The Past 12 Months (In 2007 Inflation-Adjusted Dollars) By Household Size [xls]</a>	B19019	August 26, 2008
<a href="#">Aggregate Household Income In The Past 12 Months (In 2007 Inflation-Adjusted Dollars) [xls]</a>	B19025	August 26, 2008
<a href="#">Aggregate Household Income In The Past 12 Months (In 2007 Inflation-Adjusted Dollars) (White Alone Householder) [xls]</a>	B19025A	August 26, 2008
<a href="#">Aggregate Household Income In The Past 12 Months (In 2007 Inflation-Adjusted Dollars) (Black Or African American Alone Householder) [xls]</a>	B19025B	August 26, 2008
<a href="#">Aggregate Household Income In The Past 12 Months (In 2007 Inflation-Adjusted Dollars) (American Indian And Alaska Native Alone Householder) [xls]</a>	B19025C	August 26, 2008
<a href="#">Aggregate Household Income In The Past 12 Months (In 2007 Inflation-Adjusted Dollars) (Asian Alone Householder) [xls]</a>	B19025D	August 26, 2008
<a href="#">Aggregate Household Income In The Past 12 Months (In 2007 Inflation-Adjusted Dollars) (Native Hawaiian And Other Pacific Islander Alone Householder) [xls]</a>	B19025E	August 26, 2008
<a href="#">Aggregate Household Income In The Past 12 Months (In 2007 Inflation-Adjusted Dollars) (Some Other Race Alone Householder) [xls]</a>	B19025F	August 26, 2008
<a href="#">Aggregate Household Income In The Past 12 Months (In 2007 Inflation-Adjusted Dollars) (Two Or More Races Householder) [xls]</a>	B19025G	August 26, 2008
<a href="#">Aggregate Household Income In The Past 12 Months (In 2007 Inflation-Adjusted Dollars) (White Alone, Not Hispanic Or Latino Householder) [xls]</a>	B19025H	August 26, 2008
<a href="#">Aggregate Household Income In The Past 12 Months (In 2007 Inflation-Adjusted Dollars) (Hispanic Or Latino Householder) [xls]</a>	B19025I	August 26, 2008
<a href="#">Age Of Householder By Household Income In The Past 12 Months (In 2007 Inflation-Adjusted Dollars) [xls]</a>	B19037	August 26, 2008
<a href="#">Age Of Householder By Household Income In The Past 12 Months (In 2007 Inflation-Adjusted Dollars) (White Alone Householder) [xls]</a>	B19037A	August 26, 2008

<a href="#">Age Of Householder By Household Income In The Past 12 Months (In 2007 Inflation-Adjusted Dollars) (Black Or African American Alone Householder) [xls]</a>	B19037B	August 26, 2008
<a href="#">Age Of Householder By Household Income In The Past 12 Months (In 2007 Inflation-Adjusted Dollars) (Asian Alone Householder) [xls]</a>	B19037D	August 26, 2008
<a href="#">Age Of Householder By Household Income In The Past 12 Months (In 2007 Inflation-Adjusted Dollars) (Some Other Race Alone Householder) [xls]</a>	B19037F	August 26, 2008
<a href="#">Median Household Income In The Past 12 Months (In 2007 Inflation-Adjusted Dollars) (Two Or More Races Householder) [xls]</a>	B19013G	August 26, 2008
<a href="#">Median Household Income In The Past 12 Months (In 2007 Inflation-Adjusted Dollars) (Some Other Race Alone Householder) [xls]</a>	B19013F	August 26, 2008
<a href="#">Household Income In The Past 12 Months (In 2007 Inflation-Adjusted Dollars) (White Alone Householder) [xls]</a>	B19001A	August 26, 2008
<a href="#">Household Income In The Past 12 Months (In 2007 Inflation-Adjusted Dollars) (Black Or African American Alone Householder) [xls]</a>	B19001B	August 26, 2008
<a href="#">Household Income In The Past 12 Months (In 2007 Inflation-Adjusted Dollars) (American Indian And Alaska Native Alone Householder) [xls]</a>	B19001C	August 26, 2008
<a href="#">Household Income In The Past 12 Months (In 2007 Inflation-Adjusted Dollars) (Asian Alone Householder) [xls]</a>	B19001D	August 26, 2008
<a href="#">Age Of Householder By Household Income In The Past 12 Months (In 2007 Inflation-Adjusted Dollars) (American Indian And Alaska Native Alone Householder) [xls]</a>	B19037C	August 26, 2008
<a href="#">Household Income In The Past 12 Months (In 2007 Inflation-Adjusted Dollars) (Native Hawaiian And Other Pacific Islander Alone Householder) [xls]</a>	B19001E	August 26, 2008
<a href="#">Household Income In The Past 12 Months (In 2007 Inflation-Adjusted Dollars) (Some Other Race Alone Householder) [xls]</a>	B19001F	August 26, 2008
<a href="#">Household Income In The Past 12 Months (In 2007 Inflation-Adjusted Dollars) (Two Or More Races Householder) [xls]</a>	B19001G	August 26, 2008
<a href="#">Household Income In The Past 12 Months (In 2007 Inflation-Adjusted Dollars) (White Alone, Not Hispanic Or Latino Householder) [xls]</a>	B19001H	August 26, 2008

<a href="#">Household Income In The Past 12 Months (In 2007 Inflation-Adjusted Dollars) (Hispanic Or Latino Householder) [xls]</a>	B19001I	August 26, 2008
<a href="#">Median Household Income In The Past 12 Months (In 2007 Inflation-Adjusted Dollars) [xls]</a>	B19013	August 26, 2008
<a href="#">Median Household Income In The Past 12 Months (In 2007 Inflation-Adjusted Dollars) (White Alone Householder) [xls]</a>	B19013A	August 26, 2008
<a href="#">Median Household Income In The Past 12 Months (In 2007 Inflation-Adjusted Dollars) (Black Or African American Alone Householder) [xls]</a>	B19013B	August 26, 2008
<a href="#">Median Household Income In The Past 12 Months (In 2007 Inflation-Adjusted Dollars) (American Indian And Alaska Native Alone Householder) [xls]</a>	B19013C	August 26, 2008
<a href="#">Median Household Income In The Past 12 Months (In 2007 Inflation-Adjusted Dollars) (Asian Alone Householder) [xls]</a>	B19013D	August 26, 2008
<a href="#">Median Household Income In The Past 12 Months (In 2007 Inflation-Adjusted Dollars) (Native Hawaiian And Other Pacific Islander Alone Householder) [xls]</a>	B19013E	August 26, 2008
<a href="#">Age Of Householder By Household Income In The Past 12 Months (In 2007 Inflation-Adjusted Dollars) (Native Hawaiian And Other Pacific Islander Alone Householder) [xls]</a>	B19037E	August 26, 2008
<a href="#">Social Security Income In The Past 12 Months For Households [xls]</a>	B19055	August 26, 2008
<a href="#">Aggregate Family Income In The Past 12 Months (In 2007 Inflation-Adjusted Dollars) [xls]</a>	B19127	August 26, 2008
<a href="#">Median Nonfamily Household Income In The Past 12 Months (In 2007 Inflation-Adjusted Dollars) (Native Hawaiian And Other Pacific Islander Alone Householder) [xls]</a>	B19202E	August 26, 2008
<a href="#">Median Nonfamily Household Income In The Past 12 Months (In 2007 Inflation-Adjusted Dollars) (Some Other Race Alone Householder) [xls]</a>	B19202F	August 26, 2008
<a href="#">Median Nonfamily Household Income In The Past 12 Months (In 2007 Inflation-Adjusted Dollars) (Two Or More Races Householder) [xls]</a>	B19202G	August 26, 2008
<a href="#">Median Nonfamily Household Income In The Past 12 Months (In 2007 Inflation-Adjusted Dollars) (White Alone, Not Hispanic Or Latino Householder) [xls]</a>	B19202H	August 26, 2008
<a href="#">Median Nonfamily Household Income In The Past 12 Months (In 2007 Inflation-Adjusted Dollars) (Hispanic Or Latino Householder) [xls]</a>	B19202I	August 26, 2008

<a href="#">Aggregate Nonfamily Household Income In The Past 12 Months (In 2007 Inflation-Adjusted Dollars) [xls]</a>	B19214	August 26, 2008
<a href="#">Median Nonfamily Household Income In The Past 12 Months (In 2007 Inflation-Adjusted Dollars) By Sex Of Householder By Living Alone By Age Of Householder [xls]</a>	B19215	August 26, 2008
<a href="#">Aggregate Nonfamily Household Income In The Past 12 Months (In 2007 Inflation-Adjusted Dollars) By Sex Of Householder By Living Alone By Age Of Householder [xls]</a>	B19216	August 26, 2008
<a href="#">Median Nonfamily Household Income In The Past 12 Months (In 2007 Inflation-Adjusted Dollars) (Asian Alone Householder) [xls]</a>	B19202D	August 26, 2008
<a href="#">Median Nonfamily Household Income In The Past 12 Months (In 2007 Inflation-Adjusted Dollars) (American Indian And Alaska Native Alone Householder) [xls]</a>	B19202C	August 26, 2008
<a href="#">Aggregate Family Income In The Past 12 Months (In 2007 Inflation-Adjusted Dollars) By Family Type By Presence Of Own Children Under 18 Years [xls]</a>	B19128	August 26, 2008
<a href="#">Aggregate Family Income In The Past 12 Months (In 2007 Inflation-Adjusted Dollars) By Number Of Workers In Family [xls]</a>	B19129	August 26, 2008
<a href="#">Aggregate Family Income In The Past 12 Months (In 2007 Inflation-Adjusted Dollars) By Family Type By Age Of Householder [xls]</a>	B19130	August 26, 2008
<a href="#">Family Type By Presence Of Own Children Under 18 Years By Family Income In The Past 12 Months (In 2007 Inflation-Adjusted Dollars) [xls]</a>	B19131	August 26, 2008
<a href="#">Nonfamily Household Income In The Past 12 Months (In 2007 Inflation-Adjusted Dollars) [xls]</a>	B19201	August 26, 2008
<a href="#">Median Nonfamily Household Income In The Past 12 Months (In 2007 Inflation-Adjusted Dollars) [xls]</a>	B19202	August 26, 2008
<a href="#">Median Nonfamily Household Income In The Past 12 Months (In 2007 Inflation-Adjusted Dollars) (White Alone Householder) [xls]</a>	B19202A	August 26, 2008
<a href="#">Median Nonfamily Household Income In The Past 12 Months (In 2007 Inflation-Adjusted Dollars) (Black Or African American Alone Householder) [xls]</a>	B19202B	August 26, 2008
<a href="#">Per Capita Income In The Past 12 Months (In 2007 Inflation-Adjusted Dollars) [xls]</a>	B19301	August 26, 2008
<a href="#">Per Capita Income In The Past 12 Months (In 2007 Inflation-Adjusted Dollars) (White Alone) [xls]</a>	B19301A	August 26, 2008
<a href="#">Per Capita Income In The Past 12 Months (In 2007 Inflation-Adjusted Dollars) (Black Or African American Alone) [xls]</a>	B19301B	August 26, 2008

<a href="#">Aggregate Income In The Past 12 Months (In 2007 Inflation-Adjusted Dollars) For The Population 15 Years And Over (American Indian And Alaska Native Alone) [xls]</a>	B19313C	August 26, 2008
<a href="#">Aggregate Income In The Past 12 Months (In 2007 Inflation-Adjusted Dollars) For The Population 15 Years And Over (Asian Alone) [xls]</a>	B19313D	August 26, 2008
<a href="#">Aggregate Income In The Past 12 Months (In 2007 Inflation-Adjusted Dollars) For The Population 15 Years And Over (Native Hawaiian And Other Pacific Islander Alone) [xls]</a>	B19313E	August 26, 2008
<a href="#">Aggregate Income In The Past 12 Months (In 2007 Inflation-Adjusted Dollars) For The Population 15 Years And Over (Some Other Race Alone) [xls]</a>	B19313F	August 26, 2008
<a href="#">Aggregate Income In The Past 12 Months (In 2007 Inflation-Adjusted Dollars) For The Population 15 Years And Over (Two Or More Races) [xls]</a>	B19313G	August 26, 2008
<a href="#">Aggregate Income In The Past 12 Months (In 2007 Inflation-Adjusted Dollars) For The Population 15 Years And Over (White Alone, Not Hispanic Or Latino) [xls]</a>	B19313H	August 26, 2008
<a href="#">Sex By Work Experience In The Past 12 Months By Income In The Past 12 Months (In 2007 Inflation-Adjusted Dollars) For The Population 15 Years And Over [xls]</a>	B19325	August 26, 2008
<a href="#">Median Income In The Past 12 Months (In 2007 Inflation-Adjusted Dollars) By Sex By Work Experience In The Past 12 Months For The Population 15 Years And Over With Income [xls]</a>	B19326	August 26, 2008
<a href="#">Aggregate Income In The Past 12 Months (In 2007 Inflation-Adjusted Dollars) For The Population 15 Years And Over (Black Or African American Alone) [xls]</a>	B19313B	August 26, 2008
<a href="#">Aggregate Income In The Past 12 Months (In 2007 Inflation-Adjusted Dollars) For The Population 15 Years And Over (White Alone) [xls]</a>	B19313A	August 26, 2008
<a href="#">Per Capita Income In The Past 12 Months (In 2007 Inflation-Adjusted Dollars) (American Indian And Alaska Native Alone) [xls]</a>	B19301C	August 26, 2008
<a href="#">Per Capita Income In The Past 12 Months (In 2007 Inflation-Adjusted Dollars) (Asian Alone) [xls]</a>	B19301D	August 26, 2008
<a href="#">Per Capita Income In The Past 12 Months (In 2007 Inflation-Adjusted Dollars) (Native Hawaiian And Other Pacific Islander Alone) [xls]</a>	B19301E	August 26, 2008

<a href="#">Per Capita Income In The Past 12 Months (In 2007 Inflation-Adjusted Dollars) (Some Other Race Alone) [xls]</a>	B19301F	August 26, 2008
<a href="#">Per Capita Income In The Past 12 Months (In 2007 Inflation-Adjusted Dollars) (Two Or More Races) [xls]</a>	B19301G	August 26, 2008
<a href="#">Per Capita Income In The Past 12 Months (In 2007 Inflation-Adjusted Dollars) (White Alone, Not Hispanic Or Latino) [xls]</a>	B19301H	August 26, 2008
<a href="#">Per Capita Income In The Past 12 Months (In 2007 Inflation-Adjusted Dollars) (Hispanic Or Latino) [xls]</a>	B19301I	August 26, 2008
<a href="#">Aggregate Income In The Past 12 Months (In 2007 Inflation-Adjusted Dollars) [xls]</a>	B19313	August 26, 2008
<a href="#">Median Household Income In The Past 12 Months (In 2007 Inflation-Adjusted Dollars) (White Alone, Not Hispanic Or Latino Householder) [xls]</a>	B19013H	August 26, 2008
<a href="#">Median Family Income In The Past 12 Months (In 2007 Inflation-Adjusted Dollars) By Family Type By Presence Of Own Children Under 18 Years [xls]</a>	B19126	August 26, 2008
<a href="#">Supplemental Security Income (Ssi) In The Past 12 Months For Households [xls]</a>	B19056	August 26, 2008
<a href="#">Aggregate Public Assistance Income In The Past 12 Months (In 2007 Inflation-Adjusted Dollars) For Households [xls]</a>	B19067	August 26, 2008
<a href="#">Aggregate Retirement Income In The Past 12 Months (In 2007 Inflation-Adjusted Dollars) For Households [xls]</a>	B19069	August 26, 2008
<a href="#">Aggregate Other Types Of Income In The Past 12 Months (In 2007 Inflation-Adjusted Dollars) For Households [xls]</a>	B19070	August 26, 2008
<a href="#">Household Income Quintile Upper Limits [xls]</a>	B19080	August 26, 2008
<a href="#">Mean Household Income Of Quintiles [xls]</a>	B19081	August 26, 2008
<a href="#">Shares Of Aggregate Household Income By Quintile [xls]</a>	B19082	August 26, 2008
<a href="#">Gini Index Of Income Inequality [xls]</a>	B19083	August 26, 2008
<a href="#">Family Income In The Past 12 Months (In 2007 Inflation-Adjusted Dollars) [xls]</a>	B19101	August 26, 2008
<a href="#">Aggregate Supplemental Security Income (Ssi) In The Past 12 Months (In 2007 Inflation-Adjusted Dollars) For Households [xls]</a>	B19066	August 26, 2008
<a href="#">Aggregate Social Security Income In The Past 12 Months (In 2007 Inflation-Adjusted Dollars) For Households [xls]</a>	B19065	August 26, 2008
<a href="#">Public Assistance Income In The Past 12 Months For Households [xls]</a>	B19057	August 26, 2008
<a href="#">Public Assistance Income Or Food Stamps In The Past 12 Months For Households [xls]</a>	B19058	August 26, 2008
<a href="#">Retirement Income In The Past 12 Months For Households [xls]</a>	B19059	August 26, 2008

<a href="#">Other Types Of Income In The Past 12 Months For Households [xls]</a>	B19060	August 26, 2008
<a href="#">Aggregate Earnings In The Past 12 Months (In 2007 Inflation-Adjusted Dollars) For Households [xls]</a>	B19061	August 26, 2008
<a href="#">Aggregate Wage Or Salary Income In The Past 12 Months (In 2007 Inflation-Adjusted Dollars) For Households [xls]</a>	B19062	August 26, 2008
<a href="#">Aggregate Self-Employment Income In The Past 12 Months (In 2007 Inflation-Adjusted Dollars) For Households [xls]</a>	B19063	August 26, 2008
<a href="#">Aggregate Interest, Dividends, Or Net Rental Income In The Past 12 Months (In 2007 Inflation-Adjusted Dollars) For Households [xls]</a>	B19064	August 26, 2008
<a href="#">Family Income In The Past 12 Months (In 2007 Inflation-Adjusted Dollars) (White Alone Householder) [xls]</a>	B19101A	August 26, 2008
<a href="#">Family Income In The Past 12 Months (In 2007 Inflation-Adjusted Dollars) (Black Or African American Alone Householder) [xls]</a>	B19101B	August 26, 2008
<a href="#">Family Income In The Past 12 Months (In 2007 Inflation-Adjusted Dollars) (American Indian And Alaska Native Alone Householder) [xls]</a>	B19101C	August 26, 2008
<a href="#">Median Family Income In The Past 12 Months (In 2007 Inflation-Adjusted Dollars) (Some Other Race Alone Householder) [xls]</a>	B19113F	August 26, 2008
<a href="#">Median Family Income In The Past 12 Months (In 2007 Inflation-Adjusted Dollars) (Two Or More Races) [xls]</a>	B19113G	August 26, 2008
<a href="#">Aggregate Income In The Past 12 Months (In 2007 Inflation-Adjusted Dollars) For The Population 15 Years And Over (Hispanic Or Latino) [xls]</a>	B19313I	August 26, 2008
<a href="#">Median Family Income In The Past 12 Months (In 2007 Inflation-Adjusted Dollars) (White Alone, Not Hispanic Or Latino Householder) [xls]</a>	B19113H	August 26, 2008
<a href="#">Median Family Income In The Past 12 Months (In 2007 Inflation-Adjusted Dollars) (Hispanic Or Latino Householder) [xls]</a>	B19113I	August 26, 2008
<a href="#">Median Family Income In The Past 12 Months (In 2007 Inflation-Adjusted Dollars) By Family Size [xls]</a>	B19119	August 26, 2008
<a href="#">Median Family Income In The Past 12 Months (In 2007 Inflation-Adjusted Dollars) By Number Of Earners In Family [xls]</a>	B19121	August 26, 2008
<a href="#">Median Family Income In The Past 12 Months (In 2007 Inflation-Adjusted Dollars) By Presence Of Own Children Under 18 Years [xls]</a>	B19125	August 26, 2008

<a href="#">Median Family Income In The Past 12 Months (In 2007 Inflation-Adjusted Dollars) (Native Hawaiian And Other Pacific Islander Alone Householder) [xls]</a>	B19113E	August 26, 2008
<a href="#">Median Family Income In The Past 12 Months (In 2007 Inflation-Adjusted Dollars) (Asian Alone Householder) [xls]</a>	B19113D	August 26, 2008
<a href="#">Median Family Income In The Past 12 Months (In 2007 Inflation-Adjusted Dollars) (American Indian And Alaska Native Alone Householder) [xls]</a>	B19113C	August 26, 2008
<a href="#">Family Income In The Past 12 Months (In 2007 Inflation-Adjusted Dollars) (Native Hawaiian And Other Pacific Islander Alone Householder) [xls]</a>	B19101E	August 26, 2008
<a href="#">Family Income In The Past 12 Months (In 2007 Inflation-Adjusted Dollars) (Some Other Race Alone Householder) [xls]</a>	B19101F	August 26, 2008
<a href="#">Family Income In The Past 12 Months (In 2007 Inflation-Adjusted Dollars) (Two Or More Races Householder) [xls]</a>	B19101G	August 26, 2008
<a href="#">Family Income In The Past 12 Months (In 2007 Inflation-Adjusted Dollars) (White Alone, Not Hispanic Or Latino Householder) [xls]</a>	B19101H	August 26, 2008
<a href="#">Family Income In The Past 12 Months (In 2007 Inflation-Adjusted Dollars) (Hispanic Or Latino Householder) [xls]</a>	B19101I	August 26, 2008
<a href="#">Median Family Income In The Past 12 Months (In 2007 Inflation-Adjusted Dollars) [xls]</a>	B19113	August 26, 2008
<a href="#">Median Family Income In The Past 12 Months (In 2007 Inflation-Adjusted Dollars) (White Alone Householder) [xls]</a>	B19113A	August 26, 2008
<a href="#">Median Family Income In The Past 12 Months (In 2007 Inflation-Adjusted Dollars) (Black Or African American Alone Householder) [xls]</a>	B19113B	August 26, 2008
<b>Industry</b>		
Table Title	Table ID	Release Date
<a href="#">Sex By Industry For The Civilian Employed Population 16 Years And Over [xls]</a>	B24030	September 23, 2008
<a href="#">Industry By Median Earnings In The Past 12 Months (In 2007 Inflation-Adjusted Dollars) For The Civilian Employed Population 16 Years And Over [xls]</a>	B24031	September 23, 2008
<a href="#">Sex By Industry And Median Earnings In The Past 12 Months (In 2007 Inflation-Adjusted Dollars) For The Civilian Employed Population 16 Years And Over [xls]</a>	B24032	September 23, 2008
<a href="#">Sex By Industry For The Full-Time, Year-Round Civilian Employed Population 16 Years And Over [xls]</a>	B24040	September 23, 2008



<a href="#">Industry By Median Earnings In The Past 12 Months (In 2007 Inflation-Adjusted Dollars) For The Full-Time, Year-Round Civilian Employed Population 16 Years And Over [xls]</a>	B24041	September 23, 2008
<a href="#">Sex By Industry And Median Earnings In The Past 12 Months (In 2007 Inflation-Adjusted Dollars) For The Full-Time, Year-Round Civilian Employed Population 16 Years And Over [xls]</a>	B24042	August 26, 2008
<a href="#">Industry By Occupation For The Civilian Employed Population 16 Years And Over [xls]</a>	B24050	September 23, 2008
<a href="#">Industry By Class Of Worker For Civilian Employed Population 16 Years And Over [xls]</a>	B24070	September 23, 2008
<b>Journey to Work</b>		
Table Title	Table ID	Release Date
<a href="#">Sex Of Workers By Means Of Transportation To Work [xls]</a>	B08006	September 23, 2008
<a href="#">Sex Of Workers By Place Of Work--State And County Level [xls]</a>	B08007	September 23, 2008
<a href="#">Sex Of Workers By Place Of Work--Place Level [xls]</a>	B08008	September 23, 2008
<a href="#">Sex Of Workers By Place Of Work--Minor Civil Division Level For 12 Selected States (Ct, Me, Ma, Mi, Mn, Nh, Nj, Ny, Pa, Ri, Vt, Wi) [xls]</a>	B08009	September 23, 2008
<a href="#">Sex Of Workers By Time Leaving Home To Go To Work [xls]</a>	B08011	September 23, 2008
<a href="#">Sex Of Workers By Travel Time To Work [xls]</a>	B08012	September 23, 2008
<a href="#">Aggregate Travel Time To Work (In Minutes) Of Workers By Sex [xls]</a>	B08013	September 23, 2008
<a href="#">Sex Of Workers By Vehicles Available [xls]</a>	B08014	September 23, 2008
<a href="#">Aggregate Number Of Vehicles (Car, Truck, Or Van) Used In Commuting By Workers 16 Years And Over By Sex [xls]</a>	B08015	September 23, 2008
<a href="#">Place Of Work For Workers 16 Years And Over--Metropolitan Statistical Area Level [xls]</a>	B08016	September 23, 2008
<a href="#">Place Of Work For Workers 16 Years And Over--Micropolitan Statistical Area Level [xls]</a>	B08017	September 23, 2008
<a href="#">Place Of Work For Workers 16 Years And Over--Not Metropolitan Or Micropolitan Statistical Area Level [xls]</a>	B08018	September 23, 2008
<a href="#">Means Of Transportation To Work By Age [xls]</a>	B08101	September 23, 2008
<a href="#">Median Age By Means Of Transportation To Work [xls]</a>	B08103	September 23, 2008
<a href="#">Means Of Transportation To Work (White Alone) [xls]</a>	B08105A	September 23, 2008
<a href="#">Means Of Transportation To Work (Black Or African American Alone) [xls]</a>	B08105B	September 23, 2008
<a href="#">Means Of Transportation To Work (American Indian And Alaska Native Alone) [xls]</a>	B08105C	September 23, 2008

<a href="#">Means Of Transportation To Work (Asian Alone) [xls]</a>	B08105D	September 23, 2008
<a href="#">Means Of Transportation To Work (Native Hawaiian And Other Pacific Islander Alone) [xls]</a>	B08105E	September 23, 2008
<a href="#">Means Of Transportation To Work (Some Other Race Alone) [xls]</a>	B08105F	September 23, 2008
<a href="#">Means Of Transportation To Work (Two Or More Races) [xls]</a>	B08105G	September 23, 2008
<a href="#">Means Of Transportation To Work (White Alone, Not Hispanic Or Latino) [xls]</a>	B08105H	September 23, 2008
<a href="#">Means Of Transportation To Work (Hispanic Or Latino) [xls]</a>	B08105I	September 23, 2008
<a href="#">Means Of Transportation To Work By Citizenship Status [xls]</a>	B08111	September 23, 2008
<a href="#">Means Of Transportation To Work By Language Spoken At Home And Ability To Speak English [xls]</a>	B08113	September 23, 2008
<a href="#">Means Of Transportation To Work By Workers' Earnings In The Past 12 Months (In 2007 Inflation-Adjusted Dollars) [xls]</a>	B08119	September 23, 2008
<a href="#">Median Earnings In The Past 12 Months (In 2007 Inflation-Adjusted Dollars) By Means Of Transportation To Work [xls]</a>	B08121	September 23, 2008
<a href="#">Means Of Transportation To Work By Poverty Status In The Past 12 Months [xls]</a>	B08122	September 23, 2008
<a href="#">Means Of Transportation To Work By Occupation [xls]</a>	B08124	September 23, 2008
<a href="#">Means Of Transportation To Work By Industry [xls]</a>	B08126	September 23, 2008
<a href="#">Means Of Transportation To Work By Class Of Worker [xls]</a>	B08128	September 23, 2008
<a href="#">Means Of Transportation To Work By Place Of Work--State And County Level [xls]</a>	B08130	September 23, 2008
<a href="#">Aggregate Travel Time To Work (In Minutes) Of Workers By Place Of Work--State And County Level [xls]</a>	B08131	September 23, 2008
<a href="#">Means Of Transportation To Work By Time Leaving Home To Go To Work [xls]</a>	B08132	September 23, 2008
<a href="#">Aggregate Travel Time To Work (In Minutes) Of Workers By Time Leaving Home To Go To Work [xls]</a>	B08133	September 23, 2008
<a href="#">Means Of Transportation To Work By Travel Time To Work [xls]</a>	B08134	September 23, 2008
<a href="#">Aggregate Travel Time To Work (In Minutes) Of Workers By Travel Time To Work [xls]</a>	B08135	September 23, 2008
<a href="#">Aggregate Travel Time To Work (In Minutes) Of Workers By Means Of Transportation To Work [xls]</a>	B08136	September 23, 2008
<a href="#">Means Of Transportation To Work By Tenure [xls]</a>	B08137	September 23, 2008
<a href="#">Means Of Transportation To Work By Vehicles Available [xls]</a>	B08141	September 23, 2008
<a href="#">Household Size By Vehicles Available [xls]</a>	B08201	September 23, 2008
<a href="#">Household Size By Number Of Workers In Household [xls]</a>	B08202	September 23, 2008
<a href="#">Number Of Workers In Household By Vehicles Available [xls]</a>	B08203	September 23, 2008

<a href="#">Means Of Transportation To Work [xls]</a>	B08301	September 23, 2008
<a href="#">Time Leaving Home To Go To Work [xls]</a>	B08302	September 23, 2008
<a href="#">Travel Time To Work [xls]</a>	B08303	September 23, 2008
<b>Kitchen Facilities</b>		
Table Title	Table ID	Release Date
<a href="#">Kitchen Facilities For All Housing Units [xls]</a>	B25051	September 23, 2008
<a href="#">Kitchen Facilities For Occupied Housing Units [xls]</a>	B25052	September 23, 2008
<a href="#">Tenure By Kitchen Facilities [xls]</a>	B25053	September 23, 2008
<a href="#">Kitchen Facilities By Meals Included In Rent [xls]</a>	B25054	September 23, 2008
<b>Language</b>		
Table Title	Table ID	Release Date
<a href="#">Language Spoken At Home By Ability To Speak English For The Population 5 Years And Over [xls]</a>	B16001	September 23, 2008
<a href="#">Household Language By Linguistic Isolation [xls]</a>	B16002	September 23, 2008
<a href="#">Age By Language Spoken At Home For The Population 5 Years And Over In Linguistically Isolated Households [xls]</a>	B16003	September 23, 2008
<a href="#">Age By Language Spoken At Home By Ability To Speak English For The Population 5 Years And Over [xls]</a>	B16004	September 23, 2008
<a href="#">Nativity By Language Spoken At Home By Ability To Speak English For The Population 5 Years And Over [xls]</a>	B16005	September 23, 2008
<a href="#">Nativity By Language Spoken At Home By Ability To Speak English For The Population 5 Years And Over (White Alone) [xls]</a>	B16005A	September 23, 2008
<a href="#">Nativity By Language Spoken At Home By Ability To Speak English For The Population 5 Years And Over (Black Or African American Alone) [xls]</a>	B16005B	September 23, 2008
<a href="#">Nativity By Language Spoken At Home By Ability To Speak English For The Population 5 Years And Over (American Indian And Alaska Native Alone) [xls]</a>	B16005C	September 23, 2008
<a href="#">Nativity By Language Spoken At Home By Ability To Speak English For The Population 5 Years And Over (Asian Alone) [xls]</a>	B16005D	September 23, 2008
<a href="#">Nativity By Language Spoken At Home By Ability To Speak English For The Population 5 Years And Over (Native Hawaiian And Other Pacific Islander Alone) [xls]</a>	B16005E	September 23, 2008
<a href="#">Nativity By Language Spoken At Home By Ability To Speak English For The Population 5 Years And Over (Some Other Race Alone) [xls]</a>	B16005F	September 23, 2008

<a href="#">Nativity By Language Spoken At Home By Ability To Speak English For The Population 5 Years And Over (Two Or More Races) [xls]</a>	B16005G	September 23, 2008
<a href="#">Nativity By Language Spoken At Home By Ability To Speak English For The Population 5 Years And Over (White Alone, Not Hispanic Or Latino) [xls]</a>	B16005H	September 23, 2008
<a href="#">Nativity By Language Spoken At Home By Ability To Speak English For The Population 5 Years And Over (Hispanic Or Latino) [xls]</a>	B16005I	September 23, 2008
<a href="#">Language Spoken At Home By Ability To Speak English For The Population 5 Years And Over (Hispanic Or Latino) [xls]</a>	B16006	September 23, 2008
<a href="#">Age By Language Spoken At Home For The Population 5 Years And Over [xls]</a>	B16007	September 23, 2008
<a href="#">Citizenship Status By Age By Language Spoken At Home For The Population 5 Years And Over [xls]</a>	B16008	September 23, 2008
<a href="#">Poverty Status In The Past 12 Months By Age By Language Spoken At Home For The Population 5 Years And Over [xls]</a>	B16009	September 23, 2008
<a href="#">Educational Attainment And Employment Status By Language Spoken At Home For The Population 25 Years And Over [xls]</a>	B16010	September 23, 2008
<b>Marital Status</b>		
Table Title	Table ID	Release Date
<a href="#">Sex By Marital Status For The Population 15 Years And Over [xls]</a>	B12001	September 23, 2008
<a href="#">Sex By Marital Status By Age For The Population 15 Years And Over [xls]</a>	B12002	September 23, 2008
<a href="#">Sex By Marital Status For The Population 15 Years And Over (White Alone) [xls]</a>	B12002A	September 23, 2008
<a href="#">Sex By Marital Status For The Population 15 Years And Over (Black Or African American Alone) [xls]</a>	B12002B	September 23, 2008
<a href="#">Sex By Marital Status For The Population 15 Years And Over (American Indian And Alaska Native Alone) [xls]</a>	B12002C	September 23, 2008
<a href="#">Sex By Marital Status For The Population 15 Years And Over (Asian Alone) [xls]</a>	B12002D	September 23, 2008
<a href="#">Sex By Marital Status For The Population 15 Years And Over (Native Hawaiian And Other Pacific Islander Alone) [xls]</a>	B12002E	September 23, 2008
<a href="#">Sex By Marital Status For The Population 15 Years And Over (Some Other Race Alone) [xls]</a>	B12002F	September 23, 2008

<a href="#">Sex By Marital Status For The Population 15 Years And Over (Two Or More Races) [xls]</a>	B12002G	September 23, 2008
<a href="#">Sex By Marital Status For The Population 15 Years And Over (White Alone, Not Hispanic Or Latino) [xls]</a>	B12002H	September 23, 2008
<a href="#">Sex By Marital Status For The Population 15 Years And Over (Hispanic Or Latino) [xls]</a>	B12002I	September 23, 2008
<a href="#">Marital Status By Citizenship Status [xls]</a>	B12005	September 23, 2008
<a href="#">Marital Status By Sex By Labor Force Participation [xls]</a>	B12007	September 23, 2008
<a href="#">Median Age At First Marriage [xls]</a>	B12007	September 23, 2008
<a href="#">Median Age At First Marriage (White Alone) [xls]</a>	B12007A	September 23, 2008
<a href="#">Median Age At First Marriage (Black Or African American Alone) [xls]</a>	B12007B	September 23, 2008
<a href="#">Median Age At First Marriage (American Indian And Alaska Native Alone) [xls]</a>	B12007C	September 23, 2008
<a href="#">Median Age At First Marriage (Asian Alone) [xls]</a>	B12007D	September 23, 2008
<a href="#">Median Age At First Marriage (Native Hawaiian And Other Pacific Islander Alone) [xls]</a>	B12007E	September 23, 2008
<a href="#">Median Age At First Marriage (Some Other Race Alone) [xls]</a>	B12007F	September 23, 2008
<a href="#">Median Age At First Marriage (Two Or More Races) [xls]</a>	B12007G	September 23, 2008
<a href="#">Median Age At First Marriage (White Alone, Not Hispanic Or Latino) [xls]</a>	B12007H	September 23, 2008
<a href="#">Median Age At First Marriage (Hispanic Or Latino) [xls]</a>	B12007I	September 23, 2008

<b>Migration</b>		
Table Title	Table ID	Release Date
<a href="#">Residence 1 Year Ago By Age In The United States [xls]</a>	B07001	September 23, 2008
<a href="#">Median Age By Residence 1 Year Ago In The United States [xls]</a>	B07002	September 23, 2008
<a href="#">Residence 1 Year Ago By Sex In The United States [xls]</a>	B07003	September 23, 2008
<a href="#">Residence 1 Year Ago By Race (White Alone) In The United States [xls]</a>	B07004A	September 23, 2008
<a href="#">Residence 1 Year Ago By Race (Black Or African American Alone) In The United States [xls]</a>	B07004B	September 23, 2008
<a href="#">Residence 1 Year Ago By Race (American Indian And Alaska Native Alone) In The United States [xls]</a>	B07004C	September 23, 2008
<a href="#">Residence 1 Year Ago By Race (Asian Alone) In The United States [xls]</a>	B07004D	September 23, 2008
<a href="#">Residence 1 Year Ago By Race (Native Hawaiian And Other Pacific Islander Alone) In The United States [xls]</a>	B07004E	September 23, 2008
<a href="#">Residence 1 Year Ago By Race (Some Other Race Alone) In The United States [xls]</a>	B07004F	September 23, 2008
<a href="#">Residence 1 Year Ago By Race (Two Or More Races) In The United States [xls]</a>	B07004G	September 23, 2008
<a href="#">Residence 1 Year Ago By Race (White Alone, Not Hispanic Or Latino) In The United States [xls]</a>	B07004H	September 23, 2008
<a href="#">Residence 1 Year Ago By Race (Hispanic Or Latino) In The United States [xls]</a>	B07004I	September 23, 2008
<a href="#">Residence 1 Year Ago By Citizenship Status In The United States [xls]</a>	B07007	September 23, 2008
<a href="#">Residence 1 Year Ago By Marital Status In The United States [xls]</a>	B07008	September 23, 2008
<a href="#">Residence 1 Year Ago By Educational Attainment In The United States [xls]</a>	B07009	September 23, 2008
<a href="#">Residence 1 Year Ago By Individual Income In The Past 12 Months (In 2007 Inflation-Adjusted Dollars) In The United States [xls]</a>	B07010	September 23, 2008
<a href="#">Median Income In The Past 12 Months (In 2007 Inflation-Adjusted Dollars) By Residence 1 Year Ago In The United States [xls]</a>	B07011	September 23, 2008
<a href="#">Residence 1 Year Ago By Poverty Status In The Past 12 Months In The United States [xls]</a>	B07012	September 23, 2008
<a href="#">Residence 1 Year Ago By Tenure In The United States [xls]</a>	B07013	September 23, 2008
<a href="#">Movers Between Regions In The United States [xls]</a>	B07101	September 23, 2008

<a href="#">Residence 1 Year Ago--Metropolitan Statistical Area Level In The United States [xls]</a>	B07201	September 23, 2008
<a href="#">Residence 1 Year Ago--Micropolitan Statistical Area Level In The United States [xls]</a>	B07202	September 23, 2008
<a href="#">Residence 1 Year Ago--Not Metropolitan Or Micropolitan Statistical Area Level In The United States [xls]</a>	B07203	September 23, 2008
<a href="#">Residence 1 Year Ago--State, County And Place Level In The United States [xls]</a>	B07204	September 23, 2008
<b>Occupancy and Vacancy</b>		
Table Title	Table ID	Release Date
<a href="#">Housing Units [xls]</a>	B25001	September 23, 2008
<a href="#">Occupancy Status [xls]</a>	B25002	September 23, 2008
<a href="#">Vacancy Status [xls]</a>	B25004	September 23, 2008
<a href="#">Vacant - Current Residence Elsewhere [xls]</a>	B25005	September 23, 2008
<a href="#">Total Population In Occupied Housing Units By Tenure [xls]</a>	B25008	September 23, 2008
<b>Occupation</b>		
Table Title	Table ID	Release Date
<a href="#">Sex By Occupation For The Civilian Employed Population 16 Years And Over [xls]</a>	B24010	September 23, 2008
<a href="#">Sex By Occupation For The Civilian Employed Population 16 Years And Over (White Alone) [xls]</a>	B24010A	September 23, 2008
<a href="#">Sex By Occupation For The Civilian Employed Population 16 Years And Over (Black Or African American Alone) [xls]</a>	B24010B	September 23, 2008
<a href="#">Sex By Occupation For The Civilian Employed Population 16 Years And Over (American Indian And Alaska Native Alone) [xls]</a>	B24010C	September 23, 2008
<a href="#">Sex By Occupation For The Civilian Employed Population 16 Years And Over (Asian Alone) [xls]</a>	B24010D	September 23, 2008
<a href="#">Sex By Occupation For The Civilian Employed Population 16 Years And Over (Native Hawaiian And Other Pacific Islander Alone) [xls]</a>	B24010E	September 23, 2008
<a href="#">Sex By Occupation For The Civilian Employed Population 16 Years And Over (Some Other Race Alone) [xls]</a>	B24010F	September 23, 2008
<a href="#">Sex By Occupation For The Civilian Employed Population 16 Years And Over (Two Or More Races) [xls]</a>	B24010G	September 23, 2008
<a href="#">Sex By Occupation For The Civilian Employed Population 16 Years And Over (White Alone, Not Hispanic Or Latino) [xls]</a>	B24010H	September 23, 2008

<a href="#">Sex By Occupation For The Civilian Employed Population 16 Years And Over (Hispanic Or Latino) [xls]</a>	B24010I	September 23, 2008
<a href="#">Occupation By Median Earnings In The Past 12 Months (In 2007 Inflation-Adjusted Dollars) For The Civilian Employed Population 16 Years And Over [xls]</a>	B24011	September 23, 2008
<a href="#">Sex By Occupation And Median Earnings In The Past 12 Months (In 2007 Inflation-Adjusted Dollars) For The Civilian Employed Population 16 Years And Over [xls]</a>	B24012	September 23, 2008
<a href="#">Sex By Occupation For The Full-Time, Year-Round Civilian Employed Population 16 Years And Over [xls]</a>	B24020	September 23, 2008
<a href="#">Occupation By Median Earnings In The Past 12 Months (In 2007 Inflation-Adjusted Dollars) For The Full-Time, Year-Round Civilian Employed Population 16 Years And Over [xls]</a>	B24021	September 23, 2008
<a href="#">Sex By Occupation And Median Earnings In The Past 12 Months (In 2007 Inflation-Adjusted Dollars) For The Full-Time, Year-Round Civilian Employed Population 16 Years And Over [xls]</a>	B24022	August 26, 2008
<a href="#">Occupation By Class Of Worker For The Civilian Employed Population 16 Years And Over [xls]</a>	B24060	September 23, 2008
<b>Owner Costs</b>		
Table Title	Table ID	Release Date
<a href="#">Mortgage Status [xls]</a>	B25081	September 23, 2008
<a href="#">Mortgage Status And Selected Monthly Owner Costs [xls]</a>	B25087	September 23, 2008
<a href="#">Median Selected Monthly Owner Costs (Dollars) By Mortgage Status [xls]</a>	B25088	September 23, 2008
<a href="#">Aggregate Selected Monthly Owner Costs (Dollars) By Mortgage Status [xls]</a>	B25089	September 23, 2008
<a href="#">Mortgage Status By Selected Monthly Owner Costs As A Percentage Of Household Income In The Past 12 Months [xls]</a>	B25091	September 23, 2008
<a href="#">Median Selected Monthly Owner Costs As A Percentage Of Household Income In The Past 12 Months [xls]</a>	B25092	September 23, 2008
<a href="#">Selected Monthly Owner Costs [xls]</a>	B25094	September 23, 2008
<a href="#">Mortgage Status By Median Value (Dollars) [xls]</a>	B25097	September 23, 2008
<a href="#">Mortgage Status By Household Income In The Past 12 Months (In 2007 Inflation-Adjusted Dollars) [xls]</a>	B25098	September 23, 2008
<a href="#">Mortgage Status By Median Household Income In The Past 12 Months (In 2007 Inflation-Adjusted Dollars) [xls]</a>	B25099	September 23, 2008
<a href="#">Mortgage Status By Ratio Of Value To Household Income In The Past 12 Months [xls]</a>	B25100	September 23, 2008



<a href="#">Mortgage Status By Monthly Housing Costs As A Percentage Of Household Income In The Past 12 Months [xls]</a>	B25101	September 23, 2008
<a href="#">Mortgage Status By Real Estate Taxes Paid [xls]</a>	B25102	September 23, 2008
<a href="#">Mortgage Status By Median Real Estate Taxes Paid (Dollars) [xls]</a>	B25103	September 23, 2008
<a href="#">Monthly Housing Costs [xls]</a>	B25104	September 23, 2008
<a href="#">Median Monthly Housing Costs (Dollars) [xls]</a>	B25105	September 23, 2008
<a href="#">Tenure By Housing Costs As A Percentage Of Household Income In The Past 12 Months [xls]</a>	B25106	September 23, 2008
<b>Owner Statistics</b>		
Table Title	Table ID	Release Date
<a href="#">Age Of Householder By Gross Rent As A Percentage Of Household Income In The Past 12 Months [xls]</a>	B25072	September 23, 2008
<a href="#">Age Of Householder By Selected Monthly Owner Costs As A Percentage Of Household Income In The Past 12 Months [xls]</a>	B25093	September 23, 2008
<b>Place of Birth-Domestic</b>		
Table Title	Table ID	Release Date
<a href="#">Place Of Birth By Citizenship Status [xls]</a>	B05002	September 23, 2008
<a href="#">Place Of Birth By Age In The United States [xls]</a>	B06001	September 23, 2008
<a href="#">Median Age By Place Of Birth In The United States [xls]</a>	B06002	September 23, 2008
<a href="#">Place Of Birth By Sex In The United States [xls]</a>	B06003	September 23, 2008
<a href="#">Place Of Birth By Race (White Alone) In The United States [xls]</a>	B06004A	September 23, 2008
<a href="#">Place Of Birth By Race (Black Or African American Alone) In The United States [xls]</a>	B06004B	September 23, 2008
<a href="#">Place Of Birth By Race (American Indian And Alaska Native Alone) In The United States [xls]</a>	B06004C	September 23, 2008
<a href="#">Place Of Birth By Race (Asian Alone) In The United States [xls]</a>	B06004D	September 23, 2008
<a href="#">Place Of Birth By Race (Native Hawaiian And Other Pacific Islander Alone) In The United States [xls]</a>	B06004E	September 23, 2008
<a href="#">Place Of Birth By Race (Some Other Race Alone) In The United States [xls]</a>	B06004F	September 23, 2008
<a href="#">Place Of Birth By Race (Two Or More Races) In The United States [xls]</a>	B06004G	September 23, 2008
<a href="#">Place Of Birth By Race (White Alone, Not Hispanic Or Latino) In The United States [xls]</a>	B06004H	September 23, 2008
<a href="#">Place Of Birth By Race (Hispanic Or Latino) In The United States [xls]</a>	B06004I	September 23, 2008

<a href="#">Place Of Birth By Language Spoken At Home And Ability To Speak English In The United States [xls]</a>	B06007	September 23, 2008
<a href="#">Place Of Birth By Marital Status In The United States [xls]</a>	B06008	September 23, 2008
<a href="#">Place Of Birth By Educational Attainment In The United States [xls]</a>	B06009	September 23, 2008
<a href="#">Place Of Birth By Individual Income In The Past 12 Months (In 2007 Inflation-Adjusted Dollars) In The United States [xls]</a>	B06010	September 23, 2008
<a href="#">Median Income In The Past 12 Months (In 2007 Inflation-Adjusted Dollars) By Place Of Birth In The United States [xls]</a>	B06011	September 23, 2008
<a href="#">Place Of Birth By Poverty Status In The Past 12 Months In The United States [xls]</a>	B06012	September 23, 2008
<b>Place of Work</b>		
Table Title	Table ID	Release Date
<a href="#">Sex Of Workers By Means Of Transportation To Work For Workplace Geography [xls]</a>	B08406	September 23, 2008
<a href="#">Sex Of Workers By Travel Time To Work For Workplace Geography [xls]</a>	B08412	September 23, 2008
<a href="#">Means Of Transportation To Work By Age For Workplace Geography [xls]</a>	B08501	September 23, 2008
<a href="#">Median Age By Means Of Transportation To Work For Workplace Geography [xls]</a>	B08503	September 23, 2008
<a href="#">Means Of Transportation To Work For Workplace Geography (White Alone) [xls]</a>	B08505A	September 23, 2008
<a href="#">Means Of Transportation To Work For Workplace Geography (Black Or African American Alone) [xls]</a>	B08505B	September 23, 2008
<a href="#">Means Of Transportation To Work For Workplace Geography (American Indian And Alaska Native Alone) [xls]</a>	B08505C	September 23, 2008
<a href="#">Means Of Transportation To Work For Workplace Geography (Asian Alone) [xls]</a>	B08505D	September 23, 2008
<a href="#">Means Of Transportation To Work For Workplace Geography (Native Hawaiian And Other Pacific Islander Alone) [xls]</a>	B08505E	September 23, 2008
<a href="#">Means Of Transportation To Work For Workplace Geography (Some Other Race Alone) [xls]</a>	B08505F	September 23, 2008
<a href="#">Means Of Transportation To Work For Workplace Geography (Two Or More Races) [xls]</a>	B08505G	September 23, 2008
<a href="#">Means Of Transportation To Work For Workplace Geography (White Alone, Not Hispanic Or Latino) [xls]</a>	B08505H	September 23, 2008

<a href="#">Means Of Transportation To Work For Workplace Geography (Hispanic Or Latino) [xls]</a>	B08505I	September 23, 2008
<a href="#">Means Of Transportation To Work By Citizenship Status For Workplace Geography [xls]</a>	B08511	September 23, 2008
<a href="#">Means Of Transportation To Work By Language Spoken At Home And Ability To Speak English For Workplace Geography [xls]</a>	B08513	September 23, 2008
<a href="#">Means Of Transportation To Work By Workers' Earnings In The Past 12 Months (In 2007 Inflation-Adjusted Dollars) For Workplace Geography [xls]</a>	B08519	September 23, 2008
<a href="#">Median Earnings In The Past 12 Months (In 2007 Inflation-Adjusted Dollars) By Means Of Transportation To Work For Workplace Geography [xls]</a>	B08521	September 23, 2008
<a href="#">Means Of Transportation To Work By Poverty Status In The Past 12 Months For Workplace Geography [xls]</a>	B08522	September 23, 2008
<a href="#">Means Of Transportation To Work By Occupation For Workplace Geography [xls]</a>	B08524	September 23, 2008
<a href="#">Means Of Transportation To Work By Industry For Workplace Geography [xls]</a>	B08526	September 23, 2008
<a href="#">Means Of Transportation To Work By Class Of Worker For Workplace Geography [xls]</a>	B08528	September 23, 2008
<a href="#">Means Of Transportation To Work By Time Arriving At Work From Home For Workplace Geography [xls]</a>	B08532	September 23, 2008
<a href="#">Means Of Transportation To Work By Travel Time To Work For Workplace Geography [xls]</a>	B08534	September 23, 2008
<a href="#">Aggregate Travel Time To Work (In Minutes) Of Workers By Means Of Transportation To Work For Workplace Geography [xls]</a>	B08536	September 23, 2008
<a href="#">Means Of Transportation To Work By Tenure For Workplace Geography [xls]</a>	B08537	September 23, 2008
<a href="#">Means Of Transportation To Work By Vehicles Available For Workplace Geography [xls]</a>	B08541	September 23, 2008
<a href="#">Means Of Transportation To Work For Workplace Geography [xls]</a>	B08601	September 23, 2008
<a href="#">Time Arriving At Work From Home For Workplace Geography [xls]</a>	B08602	September 23, 2008
<a href="#">Travel Time To Work For Workplace Geography [xls]</a>	B08603	September 23, 2008

<b>Plumbing Facilities</b>		
Table Title	Table ID	Release Date
<a href="#">Plumbing Facilities For All Housing Units [xls]</a>	B25047	September 23, 2008
<a href="#">Plumbing Facilities For Occupied Housing Units [xls]</a>	B25048	September 23, 2008
<a href="#">Tenure By Plumbing Facilities [xls]</a>	B25049	September 23, 2008
<b>Poverty</b>		
Table Title	Table ID	Release Date
<a href="#">Ratio To Poverty By Nativity Of Children Under 18 Years In Families And Subfamilies By Living Arrangements And Nativity Of Parents [xls]</a>	B05010	September 23, 2008
<a href="#">Poverty Status In The Past 12 Months By Sex By Age [xls]</a>	B17001	August 26, 2008
<a href="#">Poverty Status In The Past 12 Months By Sex By Age (White Alone) [xls]</a>	B17001A	August 26, 2008
<a href="#">Poverty Status In The Past 12 Months By Sex By Age (Black Or African American Alone) [xls]</a>	B17001B	August 26, 2008
<a href="#">Poverty Status In The Past 12 Months By Sex By Age (American Indian And Alaska Native Alone) [xls]</a>	B17001C	August 26, 2008
<a href="#">Poverty Status In The Past 12 Months By Sex By Age (Asian Alone) [xls]</a>	B17001D	August 26, 2008
<a href="#">Poverty Status In The Past 12 Months By Sex By Age (Native Hawaiian And Other Pacific Islander Alone) [xls]</a>	B17001E	August 26, 2008
<a href="#">Poverty Status In The Past 12 Months By Sex By Age (Some Other Race Alone) [xls]</a>	B17001F	August 26, 2008
<a href="#">Poverty Status In The Past 12 Months By Sex By Age (Two Or More Races) [xls]</a>	B17001G	August 26, 2008
<a href="#">Poverty Status In The Past 12 Months By Sex By Age (White Alone, Not Hispanic Or Latino) [xls]</a>	B17001H	August 26, 2008
<a href="#">Poverty Status In The Past 12 Months By Sex By Age (Hispanic Or Latino) [xls]</a>	B17001I	August 26, 2008
<a href="#">Ratio Of Income In The Past 12 Months To Poverty Level [xls]</a>	B17002	August 26, 2008
<a href="#">Poverty Status In The Past 12 Months Of Individuals By Sex By Educational Attainment [xls]</a>	B17003	August 26, 2008
<a href="#">Poverty Status In The Past 12 Months Of Individuals By Sex By Work Experience [xls]</a>	B17004	August 26, 2008
<a href="#">Poverty Status In The Past 12 Months Of Individuals By Sex By Employment Status [xls]</a>	B17005	August 26, 2008

<a href="#">Poverty Status In The Past 12 Months Of Related Children Under 18 Years By Family Type By Age Of Related Children Under 18 Years [xls]</a>	B17006	August 26, 2008
<a href="#">Poverty Status In The Past 12 Months Of Unrelated Individuals 15 Years And Over By Sex By Age [xls]</a>	B17007	August 26, 2008
<a href="#">Aggregate Income Deficit (Dollars) In The Past 12 Months Of Unrelated Individuals By Sex [xls]</a>	B17008	August 26, 2008
<a href="#">Poverty Status By Work Experience Of Unrelated Individuals By Householder Status [xls]</a>	B17009	August 26, 2008
<a href="#">Poverty Status In The Past 12 Months Of Families By Family Type By Presence Of Related Children Under 18 Years By Age Of Related Children [xls]</a>	B17010	August 26, 2008
<a href="#">Poverty Status In The Past 12 Months Of Families By Family Type By Presence Of Related Children Under 18 Years By Age Of Related Children (White Alone Householder) [xls]</a>	B17010A	August 26, 2008
<a href="#">Poverty Status In The Past 12 Months Of Families By Family Type By Presence Of Related Children Under 18 Years By Age Of Related Children (Black Or African American Alone Householder) [xls]</a>	B17010B	August 26, 2008
<a href="#">Poverty Status In The Past 12 Months Of Families By Family Type By Presence Of Related Children Under 18 Years By Age Of Related Children (American Indian And Alaska Native Alone) [xls]</a>	B17010C	August 26, 2008
<a href="#">Poverty Status In The Past 12 Months Of Families By Family Type By Presence Of Related Children Under 18 Years By Age Of Related Children (Asian Alone Householder) [xls]</a>	B17010D	August 26, 2008
<a href="#">Poverty Status In The Past 12 Months Of Families By Family Type By Presence Of Related Children Under 18 Years By Age Of Related Children (Native Hawaiian And Other Pacific Islander Alone) [xls]</a>	B17010E	August 26, 2008
<a href="#">Poverty Status In The Past 12 Months Of Families By Family Type By Presence Of Related Children Under 18 Years By Age Of Related Children (Some Other Race Alone Householder) [xls]</a>	B17010F	August 26, 2008
<a href="#">Poverty Status In The Past 12 Months Of Families By Family Type By Presence Of Related Children Under 18 Years By Age Of Related Children (Two Or More Races Householder) [xls]</a>	B17010G	August 26, 2008
<a href="#">Poverty Status In The Past 12 Months Of Families By Family Type By Presence Of Related Children Under 18 Years By Age Of Related Children (White Alone, Not Hispanic Or Latino Householder) [xls]</a>	B17010H	August 26, 2008

<a href="#">Poverty Status In The Past 12 Months Of Families By Family Type By Presence Of Related Children Under 18 Years By Age Of Related Children (Hispanic Or Latino) [xls]</a>	B17010I	August 26, 2008
<a href="#">Aggregate Income Deficit (Dollars) In The Past 12 Months For Families By Family Type [xls]</a>	B17011	August 26, 2008
<a href="#">Poverty Status In The Past 12 Months Of Families By Household Type By Number Of Related Children Under 18 Years [xls]</a>	B17012	August 26, 2008
<a href="#">Poverty Status In The Past 12 Months Of Families By Household Type By Number Of Persons In Family [xls]</a>	B17013	August 26, 2008
<a href="#">Poverty Status In The Past 12 Months Of Families By Household Type By Number Of Workers In Family [xls]</a>	B17014	August 26, 2008
<a href="#">Poverty Status In The Past 12 Months Of Families By Family Type By Social Security Income By Supplemental Security Income (Ssi) And Cash Public Assistance Income [xls]</a>	B17015	August 26, 2008
<a href="#">Poverty Status In The Past 12 Months Of Families By Family Type By Work Experience Of Householder And Spouse [xls]</a>	B17016	August 26, 2008
<a href="#">Poverty Status In The Past 12 Months By Household Type By Age Of Householder [xls]</a>	B17017	August 26, 2008
<a href="#">Poverty Status In The Past 12 Months Of Families By Household Type By Educational Attainment Of Householder [xls]</a>	B17018	August 26, 2008
<a href="#">Poverty Status In The Past 12 Months Of Families By Household Type By Tenure [xls]</a>	B17019	August 26, 2008
<a href="#">Poverty Status In The Past 12 Months By Age (White Alone) [xls]</a>	B17020A	August 26, 2008
<a href="#">Poverty Status In The Past 12 Months By Age (Black Or African American Alone) [xls]</a>	B17020B	August 26, 2008
<a href="#">Poverty Status In The Past 12 Months By Age (American Indian And Alaska Native Alone) [xls]</a>	B17020C	August 26, 2008
<a href="#">Poverty Status In The Past 12 Months By Age (Asian Alone) [xls]</a>	B17020D	August 26, 2008
<a href="#">Poverty Status In The Past 12 Months By Age (Native Hawaiian And Other Pacific Islander Alone) [xls]</a>	B17020E	August 26, 2008
<a href="#">Poverty Status In The Past 12 Months By Age (Some Other Race Alone) [xls]</a>	B17020F	August 26, 2008
<a href="#">Poverty Status In The Past 12 Months By Age (Two Or More Races) [xls]</a>	B17020G	August 26, 2008
<a href="#">Poverty Status In The Past 12 Months By Age (White Alone, Not Hispanic Or Latino) [xls]</a>	B17020H	August 26, 2008
<a href="#">Poverty Status In The Past 12 Months By Age (Hispanic Or Latino) [xls]</a>	B17020I	August 26, 2008

<a href="#">Poverty Status Of Individuals In The Past 12 Months By Living Arrangement [xls]</a>	B17021	August 26, 2008
<a href="#">Ratio Of Income To Poverty Level In The Past 12 Months Of Families By Family Type By Presence Of Related Children Under 18 Years By Age Of Related Children [xls]</a>	B17022	August 26, 2008
<a href="#">Poverty Status In The Past 12 Months Of Families By Household Type By Number Of Own Children Under 18 Years [xls]</a>	B17023	August 26, 2008
<a href="#">Age By Ratio Of Income To Poverty Level In The Past 12 Months [xls]</a>	B17024	August 26, 2008
<a href="#">Poverty Status In The Past 12 Months By Nativity [xls]</a>	B17025	August 26, 2008
<b>Race</b>		
Table Title	Table ID	Release Date
<a href="#">Race [xls]</a>	B02001	September 23, 2008
<a href="#">Race [xls]</a>	B02003	September 23, 2008
<a href="#">American Indian And Alaska Native Alone For Selected Tribal Groupings [xls]</a>	B02005	September 23, 2008
<a href="#">Asian Alone By Selected Groups [xls]</a>	B02006	September 23, 2008
<a href="#">Native Hawaiian And Other Pacific Islander Alone By Selected Groups [xls]</a>	B02007	September 23, 2008
<a href="#">White Alone Or In Combination With One Or More Other Races [xls]</a>	B02008	September 23, 2008
<a href="#">Black Or African American Alone Or In Combination With One Or More Other Races [xls]</a>	B02009	September 23, 2008
<a href="#">American Indian And Alaska Native Alone Or In Combination With One Or More Other Races [xls]</a>	B02010	September 23, 2008
<a href="#">Asian Alone Or In Combination With One Or More Other Races [xls]</a>	B02011	September 23, 2008
<a href="#">Native Hawaiian And Other Pacific Islander Alone Or In Combination With One Or More Other Races [xls]</a>	B02012	September 23, 2008
<a href="#">Some Other Race Alone Or In Combination With One Or More Other Races [xls]</a>	B02013	September 23, 2008
<b>Race of Householder</b>		
Table Title	Table ID	Release Date
<a href="#">Race Of Householder [xls]</a>	B25006	September 23, 2008

<b>Relationship</b>		
Table Title	Table ID	Release Date
<a href="#">Population Under 18 Years By Age [xls]</a>	B09001	September 23, 2008
<a href="#">Own Children Under 18 Years By Family Type And Age [xls]</a>	B09002	September 23, 2008
<a href="#">Household Type For Children Under 18 Years In Households (Excluding Householders, Spouses, And Unmarried Partners) [xls]</a>	B09005	September 23, 2008
<a href="#">Relationship To Householder For Children Under 18 Years In Households [xls]</a>	B09006	September 23, 2008
<a href="#">Presence Of Unmarried Partner Of Householder By Household Type For Children Under 18 Years In Households [xls]</a>	B09008	September 23, 2008
<a href="#">Receipt Of Supplemental Security Income (Ssi), Cash Public Assistance Income, Or Food Stamps In The Past 12 Months By Household Type For Children Under 18 Years In Households [xls]</a>	B09010	September 23, 2008
<a href="#">Household Type (Including Living Alone) By Relationship [xls]</a>	B09016	September 23, 2008
<a href="#">Relationship By Household Type (Including Living Alone) For The Population 65 Years And Over [xls]</a>	B09017	September 23, 2008
<b>Renter Statistics</b>		
Table Title	Table ID	Release Date
<a href="#">Contract Rent [xls]</a>	B25056	September 23, 2008
<a href="#">Lower Contract Rent Quartile (Dollars) [xls]</a>	B25057	September 23, 2008
<a href="#">Median Contract Rent (Dollars) [xls]</a>	B25058	September 23, 2008
<a href="#">Upper Contract Rent Quartile (Dollars) [xls]</a>	B25059	September 23, 2008
<a href="#">Aggregate Contract Rent (Dollars) [xls]</a>	B25060	September 23, 2008
<a href="#">Rent Asked [xls]</a>	B25061	September 23, 2008
<a href="#">Aggregate Rent Asked (Dollars) [xls]</a>	B25062	September 23, 2008
<a href="#">Gross Rent [xls]</a>	B25063	September 23, 2008
<a href="#">Median Gross Rent (Dollars) [xls]</a>	B25064	September 23, 2008
<a href="#">Aggregate Gross Rent (Dollars) [xls]</a>	B25065	September 23, 2008
<a href="#">Aggregate Gross Rent (Dollars) By Units In Structure [xls]</a>	B25066	September 23, 2008
<a href="#">Aggregate Gross Rent (Dollars) By Meals Included In Rent [xls]</a>	B25067	September 23, 2008
<a href="#">Bedrooms By Gross Rent [xls]</a>	B25068	September 23, 2008
<a href="#">Inclusion Of Utilities In Rent [xls]</a>	B25069	September 23, 2008
<a href="#">Gross Rent As A Percentage Of Household Income In The Past 12 Months [xls]</a>	B25070	September 23, 2008



<a href="#">Median Gross Rent As A Percentage Of Household Income In The Past 12 Months (Dollars) [xls]</a>	B25071	September 23, 2008
<a href="#">Units In Structure By Gross Rent As A Percentage Of Household Income In The Past 12 Months [xls]</a>	B25073	September 23, 2008
<a href="#">Household Income By Gross Rent As A Percentage Of Household Income In The Past 12 Months [xls]</a>	B25074	September 23, 2008
<a href="#">Median Gross Rent By Year Structure Built [xls]</a>	B25111	September 23, 2008
<a href="#">Aggregate Gross Rent (Dollars) By Year Structure Built [xls]</a>	B25112	September 23, 2008
<a href="#">Median Gross Rent By Year Householder Moved Into Unit [xls]</a>	B25113	September 23, 2008
<a href="#">Aggregate Gross Rent (Dollars) By Year Householder Moved Into Unit [xls]</a>	B25114	September 23, 2008
<a href="#">Household Income In The Past 12 Months (In 2007 Inflation-Adjusted Dollars) By Gross Rent [xls]</a>	B25122	September 23, 2008
<b>Rooms</b>		
Table Title	Table ID	Release Date
<a href="#">Rooms [xls]</a>	B25017	September 23, 2008
<a href="#">Median Number Of Rooms [xls]</a>	B25018	September 23, 2008
<a href="#">Aggregate Number Of Rooms [xls]</a>	B25019	September 23, 2008
<a href="#">Tenure By Rooms [xls]</a>	B25020	September 23, 2008
<a href="#">Median Number Of Rooms By Tenure [xls]</a>	B25021	September 23, 2008
<a href="#">Aggregate Number Of Rooms By Tenure [xls]</a>	B25022	September 23, 2008
<a href="#">Aggregate Number Of Rooms By Vacancy Status [xls]</a>	B25023	September 23, 2008
<b>School Enrollment</b>		
Table Title	Table ID	Release Date
<a href="#">School Enrollment By Level Of School For The Population 3 Years And Over [xls]</a>	B14001	September 23, 2008
<a href="#">School Enrollment By Level Of School For The Population 3 Years And Over (White Alone) [xls]</a>	B14001A	September 23, 2008
<a href="#">School Enrollment By Level Of School For The Population 3 Years And Over (Black Or African American Alone) [xls]</a>	B14001B	September 23, 2008
<a href="#">School Enrollment By Level Of School For The Population 3 Years And Over (American Indian And Alaska Native Alone) [xls]</a>	B14001C	September 23, 2008
<a href="#">School Enrollment By Level Of School For The Population 3 Years And Over (Asian Alone) [xls]</a>	B14001D	September 23, 2008
<a href="#">School Enrollment By Level Of School For The Population 3 Years And Over (Native Hawaiian And Other Pacific Islander</a>	B14001E	September 23, 2008

<a href="#">Alone) [xls]</a>		
<a href="#">School Enrollment By Level Of School For The Population 3 Years And Over (Some Other Race Alone) [xls]</a>	B14001F	September 23, 2008
<a href="#">School Enrollment By Level Of School For The Population 3 Years And Over (Two Or More Races) [xls]</a>	B14001G	September 23, 2008
<a href="#">School Enrollment By Level Of School For The Population 3 Years And Over (White Alone, Not Hispanic Or Latino) [xls]</a>	B14001H	September 23, 2008
<a href="#">School Enrollment By Level Of School For The Population 3 Years And Over (Hispanic Or Latino) [xls]</a>	B14001I	September 23, 2008
<a href="#">Sex By School Enrollment By Level Of School By Type Of School For The Population 3 Years And Over [xls]</a>	B14002	September 23, 2008
<a href="#">Sex By School Enrollment By Type Of School By Age For The Population 3 Years And Over [xls]</a>	B14003	September 23, 2008
<a href="#">Sex By College Or Graduate School Enrollment By Type Of School By Age For The Population 15 Years And Over [xls]</a>	B14004	September 23, 2008
<a href="#">Sex By School Enrollment By Educational Attainment By Employment Status For The Population 16 To 19 Years [xls]</a>	B14005	September 23, 2008
<a href="#">Poverty Status In The Past 12 Months By School Enrollment By Level Of School For The Population 3 Years And Over [xls]</a>	B14006	September 23, 2008
<b>Sex and Age</b>		
Table Title	Table ID	Release Date
<a href="#">Sex By Age [xls]</a>	B01001	September 23, 2008
<a href="#">Sex By Age (White Alone) [xls]</a>	B01001A	September 23, 2008
<a href="#">Sex By Age (Black Or African American Alone) [xls]</a>	B01001B	September 23, 2008
<a href="#">Sex By Age (American Indian And Alaska Native Alone) [xls]</a>	B01001C	September 23, 2008
<a href="#">Sex By Age (Asian Alone) [xls]</a>	B01001D	September 23, 2008
<a href="#">Sex By Age (Native Hawaiian And Other Pacific Islander Alone) [xls]</a>	B01001E	September 23, 2008
<a href="#">Sex By Age (Some Other Race Alone) [xls]</a>	B01001F	September 23, 2008
<a href="#">Sex By Age (Two Or More Races) [xls]</a>	B01001G	September 23, 2008
<a href="#">Sex By Age (White Alone, Not Hispanic Or Latino) [xls]</a>	B01001H	September 23, 2008
<a href="#">Sex By Age (Hispanic Or Latino) [xls]</a>	B01001I	September 23, 2008
<a href="#">Median Age By Sex [xls]</a>	B01002	September 23, 2008
<a href="#">Median Age By Sex (White Alone) [xls]</a>	B01002A	September 23, 2008
<a href="#">Median Age By Sex (Black Or African American Alone) [xls]</a>	B01002B	September 23, 2008
<a href="#">Median Age By Sex (American Indian And Alaska Native) [xls]</a>	B01002C	September 23, 2008

<a href="#">Median Age By Sex (Asian Alone) [xls]</a>	B01002D	September 23, 2008
<a href="#">Median Age By Sex (Native Hawaiian And Other Pacific Islander Alone) [xls]</a>	B01002E	September 23, 2008
<a href="#">Median Age By Sex (Some Other Race Alone) [xls]</a>	B01002F	September 23, 2008
<a href="#">Median Age By Sex (Two Or More Races) [xls]</a>	B01002G	September 23, 2008
<a href="#">Median Age By Sex (White Alone, Not Hispanic Or Latino) [xls]</a>	B01002H	September 23, 2008
<a href="#">Median Age By Sex (Hispanic Or Latino) [xls]</a>	B01002I	September 23, 2008
<a href="#">Total Population [xls]</a>	B01003	September 23, 2008
<b>Telephone Service Available</b>		
Table Title	Table ID	Release Date
<a href="#">Tenure By Telephone Service Available By Age Of Householder [xls]</a>	B25043	September 23, 2008
<b>Tenure</b>		
Table Title	Table ID	Release Date
<a href="#">Tenure [xls]</a>	B25003	September 23, 2008
<a href="#">Tenure (White Alone Householder) [xls]</a>	B25003A	September 23, 2008
<a href="#">Tenure (Black Or African American Alone Householder) [xls]</a>	B25003B	September 23, 2008
<a href="#">Tenure (American Indian And Alaska Native Alone Householder) [xls]</a>	B25003C	September 23, 2008
<a href="#">Tenure (Asian Alone Householder) [xls]</a>	B25003D	September 23, 2008
<a href="#">Tenure (Native Hawaiian And Other Pacific Islander Alone Householder) [xls]</a>	B25003E	September 23, 2008
<a href="#">Tenure (Some Other Race Alone Householder) [xls]</a>	B25003F	September 23, 2008
<a href="#">Tenure (Two Or More Races Householder) [xls]</a>	B25003G	September 23, 2008
<a href="#">Tenure (White Alone, Not Hispanic Or Latino Householder) [xls]</a>	B25003H	September 23, 2008
<a href="#">Tenure (Hispanic Or Latino Householder) [xls]</a>	B25003I	September 23, 2008
<a href="#">Tenure By Educational Attainment Of Householder [xls]</a>	B25013	September 23, 2008
<a href="#">Tenure By Household Income In The Past 12 Months (In 2007 Inflation-Adjusted Dollars) [xls]</a>	B25118	September 23, 2008
<a href="#">Median Household Income The Past 12 Months (In 2007 Inflation-Adjusted Dollars) By Tenure [xls]</a>	B25119	September 23, 2008
<a href="#">Aggregate Household Income In The Past 12 Months (In 2007 Inflation-Adjusted Dollars) By Tenure And Mortgage Status [xls]</a>	B25120	September 23, 2008
<a href="#">Tenure By Selected Physical And Financial Conditions [xls]</a>	B25123	September 23, 2008

<b>Units in Structure</b>		
Table Title	Table ID	Release Date
<a href="#">Units In Structure [xls]</a>	B25024	September 23, 2008
<a href="#">Tenure By Units In Structure [xls]</a>	B25032	September 23, 2008
<a href="#">Units In Structure (White Alone Householder) [xls]</a>	B25032A	September 23, 2008
<a href="#">Units In Structure (Black Or African American Alone Householder) [xls]</a>	B25032B	September 23, 2008
<a href="#">Units In Structure (American Indian And Alaska Native Alone Householder) [xls]</a>	B25032C	September 23, 2008
<a href="#">Units In Structure (Asian Alone Householder) [xls]</a>	B25032D	September 23, 2008
<a href="#">Units In Structure (Native Hawaiian And Other Pacific Islander Alone Householder) [xls]</a>	B25032E	September 23, 2008
<a href="#">Units In Structure (Some Other Race Alone Householder) [xls]</a>	B25032F	September 23, 2008
<a href="#">Units In Structure (Two Or More Races Householder) [xls]</a>	B25032G	September 23, 2008
<a href="#">Units In Structure (White Alone, Not Hispanic Or Latino Householder) [xls]</a>	B25032H	September 23, 2008
<a href="#">Units In Structure (Hispanic Or Latino Householder) [xls]</a>	B25032I	September 23, 2008
<a href="#">Total Population In Occupied Housing Units By Tenure By Units In Structure [xls]</a>	B25033	September 23, 2008
<b>Unweighted</b>		
Table Title	Table ID	Release Date
<a href="#">Unweighted Sample Count Of The Population [xls]</a>	B00001	September 23, 2008
<a href="#">Unweighted Sample Housing Units [xls]</a>	B00002	September 23, 2008
<b>Value of Home</b>		
Table Title	Table ID	Release Date
<a href="#">Value [xls]</a>	B25075	September 23, 2008
<a href="#">Lower Value Quartile (Dollars) [xls]</a>	B25076	September 23, 2008
<a href="#">Median Value (Dollars) [xls]</a>	B25077	September 23, 2008
<a href="#">Upper Value Quartile (Dollars) [xls]</a>	B25078	September 23, 2008
<a href="#">Aggregate Value (Dollars) By Age Of Householder [xls]</a>	B25079	September 23, 2008
<a href="#">Aggregate Value (Dollars) By Units In Structure [xls]</a>	B25080	September 23, 2008
<a href="#">Aggregate Value (Dollars) By Mortgage Status [xls]</a>	B25082	September 23, 2008
<a href="#">Median Value (Dollars) For Mobile Homes [xls]</a>	B25083	September 23, 2008
<a href="#">Price Asked [xls]</a>	B25085	September 23, 2008

<a href="#">Aggregate Price Asked (Dollars) [xls]</a>	B25086	September 23, 2008
<a href="#">Mortgage Status By Value [xls]</a>	B25096	September 23, 2008
<a href="#">Median Value By Year Structure Built [xls]</a>	B25107	September 23, 2008
<a href="#">Aggregate Value (Dollars) By Year Structure Built [xls]</a>	B25108	September 23, 2008
<a href="#">Median Value By Year Householder Moved Into Unit [xls]</a>	B25109	September 23, 2008
<a href="#">Aggregate Value (Dollars) By Year Householder Moved Into Unit [xls]</a>	B25110	September 23, 2008
<a href="#">Household Income In The Past 12 Months (In 2007 Inflation-Adjusted Dollars) By Value [xls]</a>	B25121	September 23, 2008
<b>Vehicles Available</b>		
Table Title	Table ID	Release Date
<a href="#">Tenure By Vehicles Available [xls]</a>	B25044	September 23, 2008
<a href="#">Tenure By Vehicles Available By Age Of Householder [xls]</a>	B25045	September 23, 2008
<a href="#">Aggregate Number Of Vehicles Available By Tenure [xls]</a>	B25046	September 23, 2008
<b>Veteran</b>		
Table Title	Table ID	Release Date
<a href="#">Sex By Age By Veteran Status For The Civilian Population 18 Years And Over [xls]</a>	B21001	September 23, 2008
<a href="#">Sex By Age By Veteran Status For The Civilian Population 18 Years And Over (White Alone) [xls]</a>	B21001A	September 23, 2008
<a href="#">Sex By Age By Veteran Status For The Civilian Population 18 Years And Over (Black Or African American Alone) [xls]</a>	B21001B	September 23, 2008
<a href="#">Sex By Age By Veteran Status For The Civilian Population 18 Years And Over (American Indian And Alaska Native Alone) [xls]</a>	B21001C	September 23, 2008
<a href="#">Sex By Age By Veteran Status For The Civilian Population 18 Years And Over (Asian Alone) [xls]</a>	B21001D	September 23, 2008
<a href="#">Sex By Age By Veteran Status For The Civilian Population 18 Years And Over (Native Hawaiian And Other Pacific Islander Alone) [xls]</a>	B21001E	September 23, 2008
<a href="#">Sex By Age By Veteran Status For The Civilian Population 18 Years And Over (Some Other Race Alone) [xls]</a>	B21001F	September 23, 2008
<a href="#">Sex By Age By Veteran Status For The Civilian Population 18 Years And Over (Two Or More Races) [xls]</a>	B21001G	September 23, 2008
<a href="#">Sex By Age By Veteran Status For The Civilian Population 18 Years And Over (White Alone, Not Hispanic Or Latino) [xls]</a>	B21001H	September 23, 2008

<a href="#">Sex By Age By Veteran Status For The Civilian Population 18 Years And Over (Hispanic Or Latino) [xls]</a>	B21001I	September 23, 2008
<a href="#">Period Of Military Service For Civilian Veterans 18 Years And Over [xls]</a>	B21002	September 23, 2008
<a href="#">Veteran Status By Educational Attainment For The Civilian Population 25 Years And Over [xls]</a>	B21003	September 23, 2008
<a href="#">Median Income In The Past 12 Months (In 2007 Inflation-Adjusted Dollars) By Veteran Status By Sex For The Civilian Population 18 Years And Over With Income [xls]</a>	B21004	September 23, 2008
<a href="#">Age By Veteran Status By Employment Status For The Civilian Population 18 To 64 Years [xls]</a>	B21005	September 23, 2008
<a href="#">Age By Veteran Status By Poverty Status In The Past 12 Months By Disability Status For The Civilian Population 18 Years And Over [xls]</a>	B21006	September 23, 2008
<b>Work Status</b>		
Table Title	Table ID	Release Date
<a href="#">Work Status In The Past 12 Months By Age By Employment Status For The Civilian Population 65 Years And Over [xls]</a>	B23004	September 23, 2008
<a href="#">Sex By Disability Status By Work Status In The Past 12 Months By Usual Hours Worked Per Week In The Past 12 Months By Weeks Worked In The Past 12 Months For The Population 16 To 64 Years [xls]</a>	B23011	September 23, 2008
<a href="#">Median Age By Sex For Workers 16 To 64 Years [xls]</a>	B23013	September 23, 2008
<a href="#">Aggregate Usual Hours Worked In The Past 12 Months By Sex For Workers 16 To 64 Years [xls]</a>	B23018	September 23, 2008
<a href="#">Aggregate Weeks Worked In The Past 12 Months By Sex For Workers 16 To 64 Years [xls]</a>	B23019	September 23, 2008
<a href="#">Mean Usual Hours Worked In The Past 12 Months For Workers 16 To 64 Years [xls]</a>	B23020	September 23, 2008
<a href="#">Mean Weeks Worked In The Past 12 Months For Workers 16 To 64 Years [xls]</a>	B23021	September 23, 2008
<b>Year Householder Moved Into Unit</b>		
Table Title	Table ID	Release Date
<a href="#">Tenure By Year Householder Moved Into Unit [xls]</a>	B25038	September 23, 2008
<a href="#">Median Year Householder Moved Into Unit By Tenure [xls]</a>	B25039	September 23, 2008

<b>Year of Entry</b>		
Table Title	Table ID	Release Date
<a href="#">Place Of Birth By Year Of Entry By Citizenship Status For The Foreign-Born Population [xls]</a>	B05007	September 23, 2008
<b>Year Structure Built</b>		
Table Title	Table ID	Release Date
<a href="#">Year Structure Built [xls]</a>	B25034	September 23, 2008
<a href="#">Median Year Structure Built [xls]</a>	B25035	September 23, 2008
<a href="#">Tenure By Year Structure Built [xls]</a>	B25036	September 23, 2008
<a href="#">Median Year Structure Built By Tenure [xls]</a>	B25037	September 23, 2008
<a href="#">Plumbing Facilities By Occupants Per Room By Year Structure Built [xls]</a>	B25050	September 23, 2008

## Chapter 4

### Summary Level Sequence Chart

---

#### 2007 American Community Survey Data Products SUMMARY LEVEL SEQUENCE

<u>Geographic Component</u>	<u>Summary Level</u>
00, 01, 43, 52, 55-59, 60-62, 89, 91-94	010 United States <sup>1</sup>
00, 01, 43, 52, 55-59, 60-62	020 Region <sup>1</sup>
00, 01, 43, 52, 55-59, 60-62	030 Division <sup>1</sup>
00, 01, 43, 52, 55-59, 60-62	040 State <sup>2</sup>
00	050 State-County <sup>3</sup>
00	060 State-County-County Subdivision
00	160 State-Place
00	500 State-Congressional District (110th)
00	795 State-Public Use Microdata Area (5%)
00	950 State-School District (Elementary)
00	960 State-School District (Secondary)
00	970 State-School District (Unified)
00	230 State-Alaska Native Regional Corporation
00	250 American Indian Area/Alaska Native Area/Hawaiian Home Land
00	310 Metropolitan Statistical Area/Micropolitan Statistical Area
00	312 Metropolitan Statistical Area/Micropolitan Statistical Area-State-Principal City
00	314 Metropolitan Statistical Area/Micropolitan Statistical Area-Metropolitan Division
00	330 Combined Statistical Area
00	335 Combined New England City and Town Area
00	350 New England City and Town Area
00	352 New England City and Town Area-State-Principal City
00	355 New England City and Town Area (NECTA)-NECTA Division
00	400 Urban Area

<sup>1</sup>Land area, water area, population counts, and housing unit counts for the United States, Regions, and Divisions do not include Puerto Rico.

<sup>2</sup>State, District of Columbia, or Puerto Rico.

<sup>3</sup>Parish in Louisiana, Borough or Census Area in Alaska, and Municipio in Puerto Rico; in Maryland, Missouri, Nevada, and Virginia, one or more cities are independent of counties and are treated as statistical equivalents of counties; the entire District of Columbia, which has no counties, is treated as a county equivalent.



## Geographic Components

<b>Geo Comp#</b>	<i>Geographic Component Description</i>
00	Not in any geographic component
01	Urban
43	Rural
52	In metropolitan or micropolitan statistical area
55	Not in metropolitan or micropolitan statistical area
56	In metropolitan statistical area
57	In metropolitan statistical area—in principal city
58	In metropolitan statistical area—not in principal city
59	Not in metropolitan statistical area
60	In micropolitan statistical area
61	In micropolitan statistical area—in principal city
62	In micropolitan statistical area—not in principal city
89	American Indian reservation and trust land – Federal Tribe
91	Oklahoma tribal statistical area
92	Tribal designated statistical area
93	Alaska Native village statistical area
94	State designated American Indian statistical area

## Chapter 5

### List of Detailed Tables

---

File ID	Table ID	Sequence Number	Line Number	Start Position	Total Cells in Table	Total Cells in Sequence	Table Title	Subject Area
ACSSF	B08406	0003		7	51 CELLS		SEX OF WORKERS BY MEANS OF TRANSPORTATION TO WORK FOR WORKPLACE GEOGRAPHY	Journey to Work
ACSSF	B08406	0003					Universe: Workers 16 years and over	
ACSSF	B08406	0003	1				Total:	
ACSSF	B08406	0003	2				Car, truck, or van:	
ACSSF	B08406	0003	3				Drove alone	
ACSSF	B08406	0003	4				Carpooled:	
ACSSF	B08406	0003	5				In 2-person carpool	
ACSSF	B08406	0003	6				In 3-person carpool	
ACSSF	B08406	0003	7				In 4-or-more-person carpool	
ACSSF	B08406	0003	8				Public transportation (excluding taxicab):	
ACSSF	B08406	0003	9				Bus or trolley bus	
ACSSF	B08406	0003	10				Streetcar or trolley car (carro publico in Puerto Rico)	
ACSSF	B08406	0003	11				Subway or elevated	
ACSSF	B08406	0003	12				Railroad	
ACSSF	B08406	0003	13				Ferryboat	
ACSSF	B08406	0003	14				Bicycle	
ACSSF	B08406	0003	15				Walked	
ACSSF	B08406	0003	16				Taxicab, motorcycle, or other means	
ACSSF	B08406	0003	17				Worked at home	
ACSSF	B08406	0003	18				Male:	
ACSSF	B08406	0003	19				Car, truck, or van:	
ACSSF	B08406	0003	20				Drove alone	
ACSSF	B08406	0003	21				Carpooled:	
ACSSF	B08406	0003	22				In 2-person carpool	
ACSSF	B08406	0003	23				In 3-person carpool	
ACSSF	B08406	0003	24				In 4-or-more-person carpool	
ACSSF	B08406	0003	25				Public transportation (excluding taxicab):	
ACSSF	B08406	0003	26				Bus or trolley bus	
ACSSF	B08406	0003	27				Streetcar or trolley car (carro publico in Puerto Rico)	
ACSSF	B08406	0003	28				Subway or elevated	
ACSSF	B08406	0003	29				Railroad	
ACSSF	B08406	0003	30				Ferryboat	
ACSSF	B08406	0003	31				Bicycle	

ACSSF	B08406	0003	32			Walked	
ACSSF	B08406	0003	33			Taxicab, motorcycle, or other means	
ACSSF	B08406	0003	34			Worked at home	
ACSSF	B08406	0003	35			Female:	
ACSSF	B08406	0003	36			Car, truck, or van:	
ACSSF	B08406	0003	37			Drove alone	
ACSSF	B08406	0003	38			Carpooled:	
ACSSF	B08406	0003	39			In 2-person carpool	
ACSSF	B08406	0003	40			In 3-person carpool	
ACSSF	B08406	0003	41			In 4-or-more-person carpool	
ACSSF	B08406	0003	42			Public transportation (excluding taxicab):	
ACSSF	B08406	0003	43			Bus or trolley bus	
ACSSF	B08406	0003	44			Streetcar or trolley car (carro publico in Puerto Rico)	
ACSSF	B08406	0003	45			Subway or elevated	
ACSSF	B08406	0003	46			Railroad	
ACSSF	B08406	0003	47			Ferryboat	
ACSSF	B08406	0003	48			Bicycle	
ACSSF	B08406	0003	49			Walked	
ACSSF	B08406	0003	50			Taxicab, motorcycle, or other means	
ACSSF	B08406	0003	51			Worked at home	
ACSSF	B08412	0003		58	39 CELLS	SEX OF WORKERS BY TRAVEL TIME TO WORK FOR WORKPLACE GEOGRAPHY	Journey to Work
ACSSF	B08412	0003				Universe: Workers 16 years and over who did not work at home	
ACSSF	B08412	0003	1			Total:	
ACSSF	B08412	0003	2			Less than 5 minutes	
ACSSF	B08412	0003	3			5 to 9 minutes	
ACSSF	B08412	0003	4			10 to 14 minutes	
ACSSF	B08412	0003	5			15 to 19 minutes	
ACSSF	B08412	0003	6			20 to 24 minutes	
ACSSF	B08412	0003	7			25 to 29 minutes	
ACSSF	B08412	0003	8			30 to 34 minutes	
ACSSF	B08412	0003	9			35 to 39 minutes	
ACSSF	B08412	0003	10			40 to 44 minutes	
ACSSF	B08412	0003	11			45 to 59 minutes	
ACSSF	B08412	0003	12			60 to 89 minutes	
ACSSF	B08412	0003	13			90 or more minutes	
ACSSF	B08412	0003	14			Male:	
ACSSF	B08412	0003	15			Less than 5 minutes	
ACSSF	B08412	0003	16			5 to 9 minutes	
ACSSF	B08412	0003	17			10 to 14 minutes	
ACSSF	B08412	0003	18			15 to 19 minutes	
ACSSF	B08412	0003	19			20 to 24 minutes	

ACSSF	B08412	0003	20			25 to 29 minutes	
ACSSF	B08412	0003	21			30 to 34 minutes	
ACSSF	B08412	0003	22			35 to 39 minutes	
ACSSF	B08412	0003	23			40 to 44 minutes	
ACSSF	B08412	0003	24			45 to 59 minutes	
ACSSF	B08412	0003	25			60 to 89 minutes	
ACSSF	B08412	0003	26			90 or more minutes	
ACSSF	B08412	0003	27			Female:	
ACSSF	B08412	0003	28			Less than 5 minutes	
ACSSF	B08412	0003	29			5 to 9 minutes	
ACSSF	B08412	0003	30			10 to 14 minutes	
ACSSF	B08412	0003	31			15 to 19 minutes	
ACSSF	B08412	0003	32			20 to 24 minutes	
ACSSF	B08412	0003	33			25 to 29 minutes	
ACSSF	B08412	0003	34			30 to 34 minutes	
ACSSF	B08412	0003	35			35 to 39 minutes	
ACSSF	B08412	0003	36			40 to 44 minutes	
ACSSF	B08412	0003	37			45 to 59 minutes	
ACSSF	B08412	0003	38			60 to 89 minutes	
ACSSF	B08412	0003	39			90 or more minutes	

•  
•  
•

Click the link below to view the complete listing.

The list of detailed tables is located on:

[http://www2.census.gov/acs2007\\_1yr/summaryfile/merge\\_5\\_6\\_final.xls](http://www2.census.gov/acs2007_1yr/summaryfile/merge_5_6_final.xls)

## **Chapter 6**

### **Accuracy of the Data**

---

The accuracy of the data document, located on:  
<http://www.census.gov/acs/www/UseData/Accuracy/Accuracy1.htm>,  
documents provides data users with a basic understanding of the sample design,  
confidentiality, sampling error, nonsampling error, estimation methodology, and accuracy  
of the data.

## **Chapter 7**

### **User Updates**

---

Any updates made to the data due to found error are displayed in Errata section of the ACS website located on: <http://www.census.gov/acs/www/UseData/Errata.htm>.

## Appendix A

### ACS Geographic Terms and Concepts

---

*The Geographic Terms and Concepts used in the American Community Survey are the same as other Census Bureau products with the exception of those listed below. See the Census 2000 Geographic Terms and Concepts [PDF] at <http://www.census.gov/geo/www/tiger/glossry2.pdf> or the Geographic Areas Reference Manual (GARM – vintage 1990) at <http://www.census.gov/geo/www/garm.html> for definitions of other geographic terms and concepts. The ACS is conducted in the United States and Puerto Rico. In Puerto Rico, the survey is known as the Puerto Rico Community Survey or PRCS.*

**Combined New England City and Town Area (CNECTA)** – Adjacent New England City and Town Areas (see glossary term New England City and Town Area) that have a high degree of employment interchange may be combined to form Combined New England City and Town Areas (or CNECTAs). New England City and Town Areas that are part of a CNECTA retain their separate identities.

**Combined Statistical Area (CSA)** – Defined by the federal Office of Management and Budget for use by federal statistical agencies according to the Census data, adjacent metropolitan and micropolitan statistical areas may be combined to form a CSA if the areas have a high degree of employment interchange. Each metropolitan or micropolitan statistical area retains its own identity.

**Core Based Statistical Area (CBSA)** – Core Based Statistical Area is a collective term for both metropolitan and micropolitan areas.

**Metropolitan Division** – A metropolitan statistical area with population greater than 2.5 million may be divided into smaller groups known as metropolitan divisions.

**Metropolitan Statistical Area/Micropolitan Statistical Area** – Metropolitan and micropolitan statistical areas (metro and micro areas) are geographic entities defined by the U.S. Office of Management and Budget for use by Federal statistical agencies in collecting, tabulating, and publishing Federal statistics. A metro area contains a core urban area of 50,000 or more population, and a micro area contains an urban core of at least 10,000 (but less than 50,000) population. Each metro or micro area consists of one or more counties and includes the counties containing the core urban area, as well as any adjacent counties that have a high degree of social and economic integration (as measured by commuting to work) with the urban core.

**New England City and Town Area (NECTA)** – is a geographic entity defined by the U.S. Office of Management and Budget for use by Federal statistical agencies in describing aspects of the New England region in the United States. NECTA is based on the concept of a core area with a large population nucleus, plus adjacent communities having a high degree of economic and social integration with that core. Similar to the metropolitan and micropolitan statistical areas, a metropolitan NECTA has an urban core

of at least 50,000 population, while a micropolitan NECTA has an urban core of at least 10,000 inhabitants but less than 50,000.

**New England City and Town Area (NECTA) Division** – A New England City and Town Area with population greater than 2.5 million may be divided into smaller groups known as NECTA Divisions.

**State Designated Tribal Statistical Area (SDTSA)** – Statistical entities for state recognized American Indian tribes that do not have a state recognized land base (reservation). SDTSAs are identified and delineated for the U.S. Census Bureau by a state liaison identified by the governor's office in each state. Formerly known as State Designated American Indian Statistical Area (SDAISA).



## **Appendix B**

### **Subject Definitions**

---

To better understand the results of the American Community Survey, 53 population variables, and 42 housing variables have identified and defined in the Subject Definitions document, located on <http://www.census.gov/acs/www/UseData/Def.htm>. This document includes information on how the data were collected and how they are presented in data products.

## Appendix C

### Data Collection and Processing Procedures

---

The American Community Survey is conducted using three methods of data collection to contact households:

- Mail: Self-enumeration through mail-out/mail-back
- Telephone: Computer Assisted Telephone Interviewing (CATI)
- Personal Visits: Computer Assisted Personal Interviewing (CAPI)

**Self-enumeration through mail-out/mail-back methodology** -- The self-enumeration procedure uses several mailing pieces:

- a prenotice letter
  - the American Community Survey questionnaire
  - a reminder card
  - and a replacement questionnaire if the original questionnaire is not returned in a timely manner
- Sample Addresses that do not respond by mail may be contacted using the follow-up procedures CATI, CAPI, or both

**Computer Assisted Telephone Interviewing (CATI)**-- The CATI operation is conducted approximately six weeks after the American Community Survey questionnaire is mailed. We will attempt to obtain telephone numbers and conduct telephone interviews for all households that have not responded by mail during the six-week period. Census Bureau telephone interviewing staff will conduct these interviews.

**Computer Assisted Personal Interviewing (CAPI)**-- Following the CATI operation, a sample will be taken from the addresses that remain uninterviewed. These addresses are visited by Census Bureau field representatives, who will conduct personal interviews.

A detailed description of the data collection and processing procedures can be found in the [ACS Design and Methodology Technical Paper](http://www.census.gov/acs/www/Downloads/tp67.pdf) located on: <http://www.census.gov/acs/www/Downloads/tp67.pdf>.

## **Appendix D**

### **Questionnaire**

---

Examples of the questionnaires forms that were sent to sample addresses can be found in the questionnaires section of the ACS website located on:

<http://www.census.gov/acs/www/SBasics/SQuest/SQuest1.htm>.

## **Appendix E**

### **Data Products and User Assistance**

---

The following documentation is provided to give users additional information on the ACS data products and to provide user assistance.

A guide to the ACS data products on the American FactFinder Website is located on: [http://factfinder.census.gov/home/saff/aff\\_acs2007\\_quickguide.pdf](http://factfinder.census.gov/home/saff/aff_acs2007_quickguide.pdf)

An overview of the changes in the data products since the 2006 ACS, including new products, is available on:

<http://www.census.gov/acs/www/Products/2007/prodchanges.html>

Details on 2007 data products availability are available on:

<http://www.census.gov/acs/www/Products/2007/schedule.html>

Guidance on making data comparisons between the 2007 ACS, 2006 ACS, and Census 2000 is available on: <http://www.census.gov/acs/www/UseData/compACS.htm>

## **Appendix F**

### **Maps**

---

Detailed information about the ACS maps can be found in the reference maps section of the ACS website located on

[http://www.census.gov/acs/www/Products/users\\_guide/acs\\_2007\\_reference\\_maps.htm](http://www.census.gov/acs/www/Products/users_guide/acs_2007_reference_maps.htm).

## **Appendix G**

### **Code Lists**

---

The ACS code lists located on [http://www2.census.gov/acs2007\\_1yr/summaryfile/Append\\_G\\_2007\\_Code\\_List.pdf](http://www2.census.gov/acs2007_1yr/summaryfile/Append_G_2007_Code_List.pdf) are provided as reference for the following characteristics: “Ancestry”, “Hispanic Origin”, “Industry”, “Language”, “Occupation”, “Place of Birth, Migration, and Place of Work”, “Race”, and “State”.

Click here to view the ACS Group Quarters Type Codes and Definitions:  
[http://www.census.gov/acs/www/Downloads/2007\\_ACS\\_GQ\\_Definitions.pdf](http://www.census.gov/acs/www/Downloads/2007_ACS_GQ_Definitions.pdf).

## Appendix H

### Examples of Standard Error Calculations

---

Below are some examples based on the data to demonstrate the use of the formulas.

#### Example 1 - Calculating the Standard Error from the Confidence Interval

The estimated number of never married males is 34,171,130. This information comes from summary table B12001 for the United States for 2005. The margin of error is 81,645.

$$\text{Standard Error} = \text{Margin of Error} / 1.645$$

Calculating the standard error using the margin of error, we have:

$$SE(34,171,130) = 81,645 / 1.645 = 49,632.$$

#### Example 2 - Calculating the Standard Error of a Sum or Difference

We are interested in the total number of people who have never been married. From Example 1, we know the number of never married males is 34,171,130. From summary table B12001 the number of never married females is 29,943,646 with a margin of error of 74,944. Combining these two estimates, the estimated number of people who have never been married is 64,114,776. To calculate the standard error of this sum, we need the standard errors of the two estimates that comprise the sum. From Example 1, the standard error for the number of never married males is 49,632. The standard error for the number of never married females is calculated the same way as in Example 1, using the margin of error:

$$SE(29,943,646) = 74,944 / 1.645 = 45,559.$$

The formula for the standard error of a sum or difference is:

$$SE(A + B + \dots) = SE(A - B - \dots) = \sqrt{SE(A)^2 + SE(B)^2 + \dots}$$

Using the formula for the standard error of a sum or difference, we have:

$$SE(34,171,130 + 29,943,646) = SE(64,114,776) = \sqrt{49,632^2 + 45,559^2} = 67,372$$

In order to calculate the margin of error at the 90 percent confidence interval for the estimate of people who have never been married, we reverse the process in Example 1.

$$\text{Margin of Error} = \text{Standard Error} * 1.645$$

Calculating the margin of error using the standard error, we have:

$$ME(64,114,776) = 67,372 * 1.645 = 110,827$$

The margin of error for the estimate of people who have never been married is (+/-) 110,827.

### Example 3 - Calculating the Standard Error of a Proportion or Percent

We are interested in looking at the proportion of females who have never been married. As shown in Example 2, the number of never married females is 29,943,646. In order to calculate the percentage, we also need to know the number of people who have never been married (64,114,776).

The estimate is  $(29,943,646 / 64,114,776) = 0.467$

0.467 is the proportion of the never married population that is women. To convert this to a percent, multiply the proportion by 100.

To calculate the standard error of this sum, we need the standard errors of the two estimates in the sum. Getting this information from Example 2, the standard error for the number of never married females is 45,559 and the standard error for the number of never married people is 67,372.

The formula for the standard error of a proportion or percent is:

$$\text{Let } P = \frac{A}{B}$$
$$SE(P) = \frac{1}{B} \sqrt{SE(A)^2 - P^2 \times SE(B)^2}$$

Using the formula for the standard error of a proportion or percent, we have:

$$SE(0.467) = \left( \frac{1}{64,114,776} \sqrt{45,559^2 - 0.467^2 \times 67,372^2} \right) = 0.0005$$

To calculate the margin of error at the 90 percent confidence interval around 0.467 using the standard error, we follow the same formula detailed in Example 2.

$$ME(0.467) = 0.0005 * 1.645 = 0.000825$$

The margin of error for the estimate of proportion of females who have never been married is (+/-) 0.000825.



Users should be cautioned that all methods in this section are approximations. They may be overestimates or underestimates of the estimate's standard error, and may not match direct calculations of standard errors or calculations obtained through other methods.

For more detailed information on the calculations of standard errors and the reasoning for the formulas please reference the Accuracy of the Data Document located on the following URL: <http://www.census.gov/acs/www/UseData/Accuracy/Accuracy1.htm>

## Appendix I

### Sample SAS Programs

---

Sample SAS programs (located on: [http://www2.census.gov/acs2007\\_1yr/summaryfile/OSASExamplePrograms/](http://www2.census.gov/acs2007_1yr/summaryfile/OSASExamplePrograms/)) are provided for users to demonstrate how to read and merge the geographic header file, estimate, margin of error, and standard error data files.

SAS Readme file:

[SASReadme.pdf](#)

Sample SAS Programs:

[ACSsfGeo.sas](#)

[SF001e.sas](#)

[SF001m.sas](#)

[SF001s.sas](#)

[SASCODE.zip](#) - Contains 22,000+ SAS programs, one for each summary file, which can be used to convert each summary file into a SAS Dataset, which include table stubs

Here is an example of how to access the three different types of Summary File estimates for one table for all geographies from the ACS summary file.

It is recommended that you review this document before using this SAS program below.

[ACS\\_SF\\_2007\\_Worked\\_Example-advanced.pdf](#)

Detailed example SAS program containing SAS macros:

[Summary\\_file\\_example\\_macros.sas](#)

## Appendix J

### User Notes

---

#### 1) Jam Values

Some data values represent unique situations where either: a) the information to be conveyed is an explanation for the absence of data, represented by a symbol in the data display, such as "(X)", or b) the information to be conveyed is an open-ended distribution, such as 115 or greater, represented by 115+.

Following are the special data values (and their meaning) for case (b), which can appear in any 2007 ACS Detailed Tables containing an open-ended distribution:

Table ID	Low Value	Jam Value Definition	High Value	Jam Value Definition
B01002	0	1-	116	115+
B01002A	0	1-	116	115+
B01002B	0	1-	116	115+
B01002C	0	1-	116	115+
B01002D	0	1-	116	115+
B01002E	0	1-	116	115+
B01002F	0	1-	116	115+
B01002G	0	1-	116	115+
B01002H	0	1-	116	115+
B01002I	0	1-	116	115+
B05004	0	1-	116	115+
B06002	0	1-	116	115+
B06002PR	0	1-	116	115+
B06011	2499	2,500-	100001	100,000+
B06011PR	2499	2,500-	100001	100,000+
B07002	0	1-	116	115+
B07002PR	0	1-	116	115+
B07011	2499	2,500-	100001	100,000+
B07011PR	2499	2,500-	100001	100,000+
B08103	0	1-	116	115+
B08121	2499	2,500-	100001	100,000+
B08503	0	1-	116	115+
B08521	2499	2,500-	100001	100,000+
B10010	2499	2,500-	200001	200,000+
B18040	2499	2,500-	100001	100,000+
B18041	2499	2,500-	100001	100,000+
B18042	2499	2,500-	100001	100,000+
B18043	2499	2,500-	100001	100,000+

<b>Table ID</b>	<b>Low Value</b>	<b>Jam Value Definition</b>	<b>High Value</b>	<b>Jam Value Definition</b>
B18044	2499	2,500-	100001	100,000+
B18045	2499	2,500-	100001	100,000+
B18046	2499	2,500-	100001	100,000+
B19013	2499	2,500-	200001	200,000+
B19013A	2499	2,500-	200001	200,000+
B19013B	2499	2,500-	200001	200,000+
B19013C	2499	2,500-	200001	200,000+
B19013D	2499	2,500-	200001	200,000+
B19013E	2499	2,500-	200001	200,000+
B19013F	2499	2,500-	200001	200,000+
B19013G	2499	2,500-	200001	200,000+
B19013H	2499	2,500-	200001	200,000+
B19013I	2499	2,500-	200001	200,000+
B19019	2499	2,500-	200001	200,000+
B19049	2499	2,500-	200001	200,000+
B19080	2499	2,500-	200000	200,000+
B19081	0	0	250001	250,000+
B19113	2499	2,500-	200001	200,000+
B19113A	2499	2,500-	200001	200,000+
B19113B	2499	2,500-	200001	200,000+
B19113C	2499	2,500-	200001	200,000+
B19113D	2499	2,500-	200001	200,000+
B19113E	2499	2,500-	200001	200,000+
B19113F	2499	2,500-	200001	200,000+
B19113G	2499	2,500-	200001	200,000+
B19113H	2499	2,500-	200001	200,000+
B19113I	2499	2,500-	200001	200,000+
B19119	2499	2,500-	200001	200,000+
B19121	2499	2,500-	200001	200,000+
B19125	2499	2,500-	200001	200,000+
B19126	2499	2,500-	200001	200,000+
B19202	2499	2,500-	200001	200,000+
B19202A	2499	2,500-	200001	200,000+
B19202B	2499	2,500-	200001	200,000+
B19202C	2499	2,500-	200001	200,000+
B19202D	2499	2,500-	200001	200,000+
B19202E	2499	2,500-	200001	200,000+
B19202F	2499	2,500-	200001	200,000+
B19202G	2499	2,500-	200001	200,000+
B19202H	2499	2,500-	200001	200,000+
B19202I	2499	2,500-	200001	200,000+
B19215	2499	2,500-	200001	200,000+
B19326	2499	2,500-	100001	100,000+
B20002	2499	2,500-	100001	100,000+

<b>Table ID</b>	<b>Low Value</b>	<b>Jam Value Definition</b>	<b>High Value</b>	<b>Jam Value Definition</b>
B20004	2499	2,500-	100001	100,000+
B20017	2499	2,500-	100001	100,000+
B20017A	2499	2,500-	100001	100,000+
B20017B	2499	2,500-	100001	100,000+
B20017C	2499	2,500-	100001	100,000+
B20017D	2499	2,500-	100001	100,000+
B20017E	2499	2,500-	100001	100,000+
B20017F	2499	2,500-	100001	100,000+
B20017G	2499	2,500-	100001	100,000+
B20017H	2499	2,500-	100001	100,000+
B20017I	2499	2,500-	100001	100,000+
B21004	2499	2,500-	100001	100,000+
B22008	2499	2,500-	200001	200,000+
B23013	0	1-	116	115+
B24011	2499	2,500-	100001	100,000+
B24012	2499	2,500-	100001	100,000+
B24021	2499	2,500-	100001	100,000+
B24022	2499	2,500-	100001	100,000+
B24031	2499	2,500-	100001	100,000+
B24032	2499	2,500-	100001	100,000+
B24041	2499	2,500-	100001	100,000+
B24042	2499	2,500-	100001	100,000+
B24081	2499	2,500-	100001	100,000+
B24082	2499	2,500-	100001	100,000+
B24091	2499	2,500-	100001	100,000+
B24092	2499	2,500-	100001	100,000+
B25018			9.1	9.0+
B25021			9.1	9.0+
B25035	1939	1940-	2005	2006+
B25037	1939	1940-	2005	2006+
B25039	1969	1970-	2005	2006+
B25057	99	100-	2001	2,000+
B25058	99	100-	2001	2,000+
B25059	99	100-	2001	2,000+
B25064	99	100-	2001	2,000+
B25071	9.9	10.0-	50.1	50.0+
B25076	9999	10,000-	1000001	1,000,000+
B25077	9999	10,000-	1000001	1,000,000+
B25078	9999	10,000-	1000001	1,000,000+
B25083	9999	10,000-	1000001	1,000,000+
B25088	99	100-	4001	4,000+
B25092	9.9	10.0-	50.1	50.0+
B25097	9999	10,000-	1000001	1,000,000+
B25099	2499	2,500-	200001	200,000+

Table ID	Low Value	Jam Value Definition	High Value	Jam Value Definition
B25103	199	200-	10001	10,000+
B25105	99	100-	4001	4,000+
B25107	9999	10,000-	1000001	1,000,000+
B25109	9999	10,000-	1000001	1,000,000+
B25111	99	100-	2001	2,000+
B25113	99	100-	2001	2,000+
B25119	2499	2,500-	200001	200,000+

The following are the special data values (and their meaning), which can appear in the 2007 ACS Summary File table as an explanation for the absence of data:

**Missing Value = “.”:** A dot “.”, indicates that the estimate is unavailable. All ACS tables contain these values when estimates are missing due to certain special conditions.

**Filtered Value or Geographic Restriction = “ “:** A blank indicates that a value is filtered or is not shown due to a geographic restriction.

**Margin of Error (MOE) or Standard Error (SE) = 0:** Estimate is controlled, which indicates the estimates are controlled and a statistical test is not appropriate.

## 2) Rounding Rules, Margin of Errors (MOE), and Standard Errors (SE)

**A.** B00001, B00002, B98001, and B98002 are sample counts, not estimates, and do not have MOE’s and SE’s associated with them. Tables in series B99\* imputation tables and B98\* quality measure tables (except B98001 and B98002) do not have MOEs calculated for them. The MOE and SE are set to -1 for these tables.

**B.** There are a few special rules on how certain margin of error and standard error are determined for ACS estimates. The accuracy of the estimate (decimal place) in the base tables to determine how many digits the standard error should be rounded.

The only exceptions to these rules are tables B19082: SHARES OF AGGREGATE HOUSEHOLD INCOME BY QUINTILE and B19083: GINI INDEX OF INCOME INEQUALITY. On American FactFinder (AFF), the estimates display to 2 decimal places and the MOE to 3.

## 3) Display of Estimates

**Display of whole numbers in the summary files:** The estimates in the summary files are stored using standard notation instead of in scientific notation. The largest estimate in the 2007 Summary File contains 14 digits, because since SAS was used to generate the 2007 Summary File, SAS automatically stores and displays values with more than 12

digits using scientific notation, but these values were stored in the summary files as whole numbers.

**Display of decimal values in the summary files:** The following median and ratio tables are displayed as decimals. The following list shows these tables, their table types, and accuracy.

Table ID	Table Title	Table Type	Accuracy
B01002	MEDIAN AGE BY SEX	MEDIAN	Tenths
B01002A	MEDIAN AGE BY SEX (WHITE ALONE)	MEDIAN	Tenths
B01002B	MEDIAN AGE BY SEX (BLACK OR AFRICAN AMERICAN ALONE)	MEDIAN	Tenths
B01002C	MEDIAN AGE BY SEX (AMERICAN INDIAN AND ALASKA NATIVE)	MEDIAN	Tenths
B01002D	MEDIAN AGE BY SEX (ASIAN ALONE)	MEDIAN	Tenths
B01002E	MEDIAN AGE BY SEX (NATIVE HAWAIIAN AND OTHER PACIFIC ISLANDER ALONE)	MEDIAN	Tenths
B01002F	MEDIAN AGE BY SEX (SOME OTHER RACE ALONE)	MEDIAN	Tenths
B01002G	MEDIAN AGE BY SEX (TWO OR MORE RACES)	MEDIAN	Tenths
B01002H	MEDIAN AGE BY SEX (WHITE ALONE, NOT HISPANIC OR LATINO)	MEDIAN	Tenths
B01002I	MEDIAN AGE BY SEX (HISPANIC OR LATINO)	MEDIAN	Tenths
B05004	MEDIAN AGE BY CITIZENSHIP STATUS BY SEX	MEDIAN	Tenths
B06002	MEDIAN AGE BY PLACE OF BIRTH IN THE UNITED STATES	MEDIAN	Tenths
B06002PR	MEDIAN AGE BY PLACE OF BIRTH IN PUERTO RICO	MEDIAN	Tenths
B07002	MEDIAN AGE BY RESIDENCE 1 YEAR AGO IN THE UNITED STATES	MEDIAN	Tenths
B07002PR	MEDIAN AGE BY RESIDENCE 1 YEAR AGO IN PUERTO RICO	MEDIAN	Tenths
B08103	MEDIAN AGE BY MEANS OF TRANSPORTATION TO WORK	MEDIAN	Tenths
B08503	MEDIAN AGE BY MEANS OF TRANSPORTATION TO WORK FOR WORKPLACE GEOGRAPHY	MEDIAN	Tenths
B12007	MEDIAN AGE AT FIRST MARRIAGE	MEDIAN	Tenths
B12007A	MEDIAN AGE AT FIRST MARRIAGE (WHITE ALONE)	MEDIAN	Tenths
B12007B	MEDIAN AGE AT FIRST MARRIAGE (BLACK OR AFRICAN AMERICAN ALONE)	MEDIAN	Tenths
B12007C	MEDIAN AGE AT FIRST MARRIAGE (AMERICAN INDIAN AND ALASKA NATIVE ALONE)	MEDIAN	Tenths
B12007D	MEDIAN AGE AT FIRST MARRIAGE (ASIAN ALONE)	MEDIAN	Tenths
B12007E	MEDIAN AGE AT FIRST MARRIAGE (NATIVE HAWAIIAN AND OTHER PACIFIC ISLANDER ALONE)	MEDIAN	Tenths
B12007F	MEDIAN AGE AT FIRST MARRIAGE (SOME OTHER RACE ALONE)	MEDIAN	Tenths
B12007G	MEDIAN AGE AT FIRST MARRIAGE (TWO OR MORE RACES)	MEDIAN	Tenths
B12007H	MEDIAN AGE AT FIRST MARRIAGE (WHITE ALONE, NOT HISPANIC OR LATINO)	MEDIAN	Tenths
B12007I	MEDIAN AGE AT FIRST MARRIAGE (HISPANIC OR LATINO)	MEDIAN	Tenths
B19082	SHARES OF AGGREGATE HOUSEHOLD INCOME BY QUINTILE	GINI	Tenths
B19083	GINI INDEX OF INCOME INEQUALITY	GINI	Thousandths
B23013	MEDIAN AGE BY SEX FOR WORKERS 16 TO 64 YEARS	MEDIAN	Tenths
B23020	MEAN USUAL HOURS WORKED IN THE PAST 12 MONTHS FOR WORKERS 16 TO 64 YEARS	RATIO	Tenths

Table ID	Table Title	Table Type	Accuracy
B23021	MEAN WEEKS WORKED IN THE PAST 12 MONTHS FOR WORKERS 16 TO 64 YEARS	RATIO	Tenths
B25010	AVERAGE HOUSEHOLD SIZE OF OCCUPIED HOUSING UNITS BY TENURE	RATIO	Hundredths
B25018	MEDIAN NUMBER OF ROOMS	MEDIAN	Tenths
B25021	MEDIAN NUMBER OF ROOMS BY TENURE	MEDIAN	Tenths
B25071	MEDIAN GROSS RENT AS A PERCENTAGE OF HOUSEHOLD INCOME IN THE PAST 12 MONTHS (DOLLARS)	MEDIAN	Tenths
B25092	MEDIAN SELECTED MONTHLY OWNER COSTS AS A PERCENTAGE OF HOUSEHOLD INCOME IN THE PAST 12 MONTHS	MEDIAN	Tenths

#### 4) Special Table ID Sequence Rules

The data from the American Community Survey contains 75 detailed tables that have different table layouts for the Puerto Rico than their United States counterparts. The United States version of the tables are limited to geographic areas in the US (50 states plus the District of Columbia) while the Puerto Rico versions are limited to areas in Puerto Rico. In the summary file the Puerto Rico version of the tables are in sequence file 144 through 153. Therefore, for all geographic areas within the US sequence files 144 through 153 will be blank. In addition, sequence files 1,2,23,24, 28-32, and 142 will be blank for Puerto Rico as they contain the US version of the tables. The decision to separate the files was made because the comparable tables between the US and Puerto Rico may have a different number of cells (such as C06001 with 45 cells and C06001PR with 37 cells) which would significantly alter the metadata between the US and Puerto Rico. To identify what tables are available for Puerto Rico only look for the "PR" suffix in the table id (e.g. C06001PR).

For more information on PR only sequences that are counterparts to states-only sequences, please reference the following table.

US/State-only Sequences	PR Only Sequences
1 (US)	144 (PR)
2 (US)	145 (PR)
23 (US)	146 (PR)
24 (US)	147 (PR)
28 (US)	148 (PR)
29 (US)	149 (PR)
30 (US)	150 (PR)
31 (US)	151 (PR)
32 (US)	152 (PR)
142 (US)	153 (PR)



## 7) ACS 2007 data tables removed or altered for Gainesville city, FL and Clearfield County, PA

There was an unusually large amount of missing data for the group quarters populations in Gainesville city, FL and Clearfield County, PA. The large amount of missing data coupled with the current edit and imputation procedures resulted in incorrect estimates for residence 1 year ago, earnings, and income for both the group quarters population and the total population. The following spreadsheet on the ACS Website, [http://www.census.gov/acs/www/UseData/ACS2007\\_errata44\\_details.xls](http://www.census.gov/acs/www/UseData/ACS2007_errata44_details.xls), contains the full list of tables, table lines, and geographic areas that will not be released due to this problem.

## 8) ACS User Notes

ACS User Notes are available on:

<http://www.census.gov/acs/www/UseData/usernotes.html>